



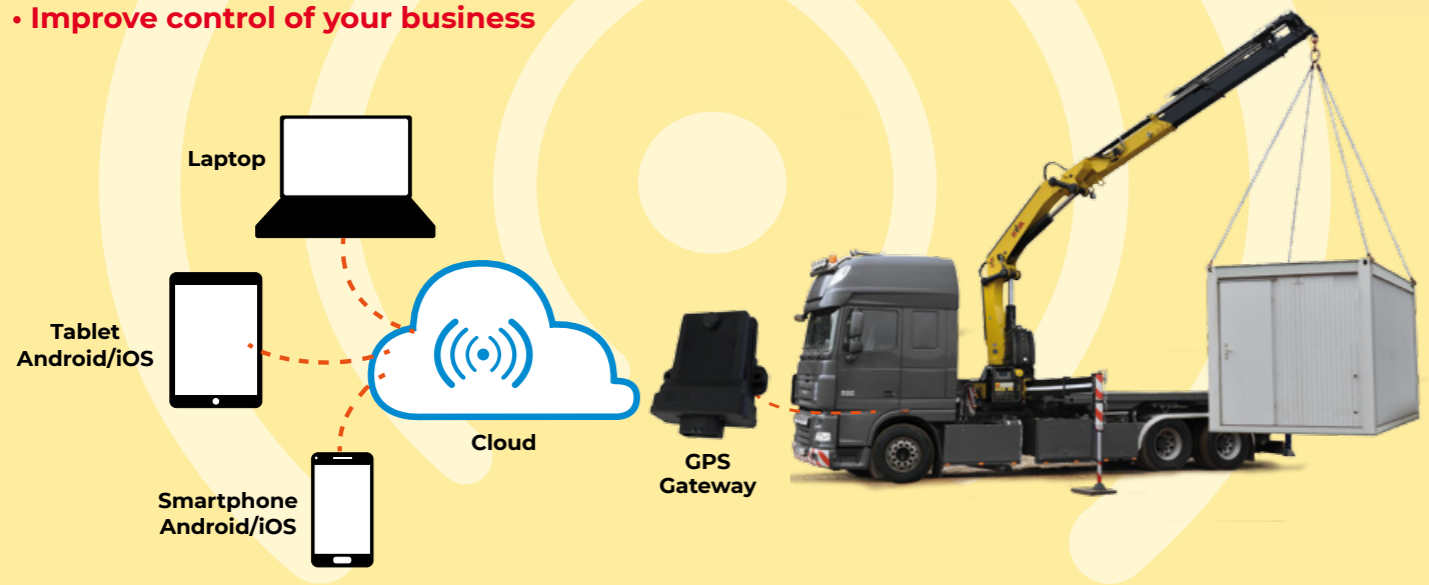
**MAXIMIZE YOUR ASSET  
PERFORMANCE**

# THE POWER OF CONNECTIVITY 4.0 DISCOVER THE FEATURES & BENEFITS

Access all crane data through a simple factory or retrofit installation and a powerful Web interface. A gateway GPS reads and sends all data - analytics from crane sensors and electronics - to the Cloud for storage in an organised and secure manner.

**Connectivity 4.0** is more than an accessory, it is an upgrade for your **Hyva EDGE crane** that will maximise performance and contribute to business growth in an easy but powerful way.

- Efficiently manage and maintain your crane
- Obtain remote support which is focused, quick and efficient
- Improve control of your business



## REMOTE CRANE MANAGEMENT IMPROVES EFFICIENCY



### ALL-IN-ONE SOLUTION

**Connectivity 4.0** includes the gateway GPS (installed on the crane in factory or available as retrofit kit), SIM card with 5 years contract and full access to data on cloud portal (available from all devices).



### REMOTE FIRMWARE UPGRADE

Latest firmware releases, direct from the factory, are always available. No delays, no wasted time.

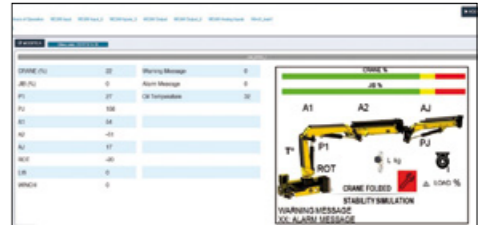


## MANAGE AND MAINTAIN YOUR CRANE MORE EFFICIENTLY



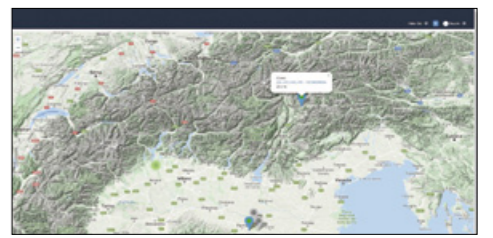
### REAL TIME MANAGEMENT

The Web portal - accessible from smartphone, tablet and other Internet-connected devices - shows real time crane data and functionality. This allows verification of crane parameters and sensor functionalities; analysis of alarms and warnings; and, remote resolution of issues arising.



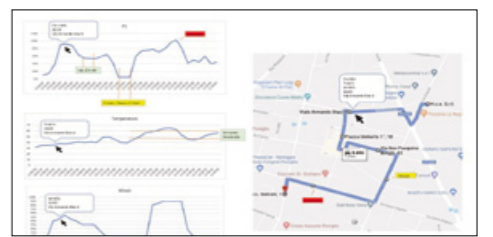
### MAPS

Locate your entire fleet, 24/7, with Geolocation functionality.



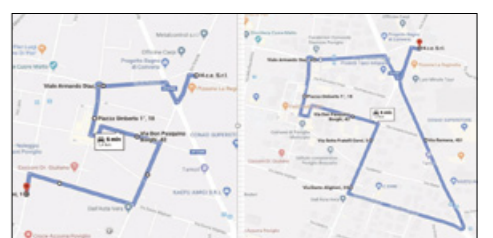
### REPORTING

Reporting can analyse and display alarms and data from pressure and load functions as intuitive graphs. Statistical analyses improve crane maintenance and performance, through quick and easy functional monitoring, by preventing breakdowns or providing technical assistance.



### PATHS

Paths displays live maps with crane routes plotted for the day or some other specified time period. Invaluable in improving daily job planning or reviewing transport cycles and working site visits.



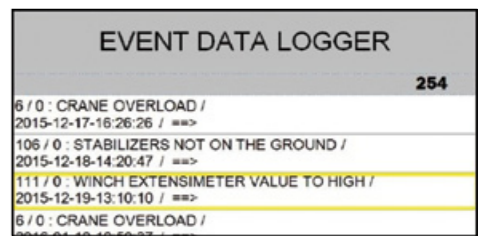
### REMOTE SET-UP

Remote set-up removes the need for a specialist technician to attend on site for every configuration adjustment to improve efficiency for a specific application. Similarly, troubleshooting and repair issues can often be successfully resolved remotely.



### EVENTS LOG

**Connectivity 4.0** saves all data, providing a log of events including alarms, warnings and sensors data. All information is then available to better check functionalities and build an accurate historical record.



**110 countries**  
**+3,500 employees**  
**20,000 customers**  
**+30 subsidiaries**  
**12 production facilities**



**Hyva is a leading provider of innovative and highly efficient transport solutions for commercial vehicles used in transport, construction, mining, materials handling and environmental service industries.**

**Founded in 1979 in the Netherlands, the company has a global presence with more than 30 wholly owned subsidiaries, extraordinary service coverage and 12 manufacturing facilities in Brazil, China, Europe and India.**

For more information on Hyva, please visit [www.hyva.com](http://www.hyva.com)

or follow us on:



**Hyva Holding B.V.**  
Antonie van Leeuwenhoekweg 37  
2408 AK Alphen aan den Rijn  
The Netherlands  
Telephone: +31 (0)172 - 42 35 55  
Telefax: +31 (0)172 - 42 08 80  
[info@hyva.com](mailto:info@hyva.com)  
[www.hyva.com](http://www.hyva.com)



**Quality and  
environmental certified**

**DEALER STAMP**