

# HYVA<sup>®</sup> CRANE HB 110

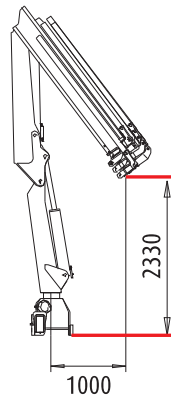
MODELS	DYNAMIC LIFTING MOMENT	MAX VERTICAL REACH	SLEWING ANGLE	SLEWING TIME	MAX WORKING HEEL	WORKING PRESSURE	CRANE WEIGHT WITHOUT STABILIZERS	WEIGHT OF STABILIZERS	OIL TANK CAPACITY	OIL FLOW	DIMENSIONS
	daNm	m	°	s/180°	°	bar	kg	kg	l	l/min	mm B x h x S
HB110 E3	-	13,20	405	17	4	300	1290	150 Std.Man. 205 Ext.Man. 250 Ext.Hyd.	60	25	2480x2170x640

## ACCESSORIES

- Supplementary elements activations
- Load limiting device
- Mechanical rotation limitation
- Winch
- Manual extensions
- Manually extra extensible stabilizers
- Hydraulic extra extensible stabilizers
- One-shot lubrication
- Oil cooler
- Top seat
- Operator Full Protection
- Extra cross beams
- Manually pivoting stabilizer legs
- Lights over the control lever
- Green oil\*



\*) Eco-friendly



Quality and environmental certified

Dealer

**HYVA<sup>®</sup> CRANE**

**Hyva Holding B.V.**  
 Antonie van Leeuwenhoekweg 37  
 2408 AK Alphen aan den Rijn  
 The Netherlands  
 Telephone: +31 (0)172 - 42 35 55  
 Telefax: +31 (0)172 - 42 08 80  
 info@hyva.com  
 www.hyva.com  
 www.hyvacrane.com

Data, descriptions and illustrations pertain only and uniquely to models sold at the time of printing of this brochure. After the date of printing, this information is purely indicative and not binding upon HYVA. Future modifications are solely at the discretion of HYVA and are always in compliance with applicable and pertinent safety standards. To obtain updated data, descriptions and illustrations, contact the manufacturer or your reseller. Cranes manufactured and/or marketed by HYVA.

# TRUCK-MOUNTED CRANES HB 110



**HYVA<sup>®</sup> CRANE**

www.hyva.com

# HYVA<sup>®</sup> CRANE

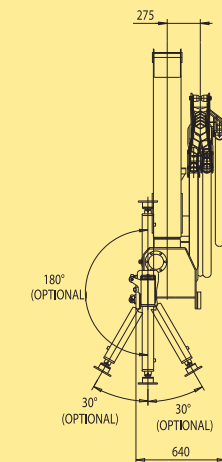
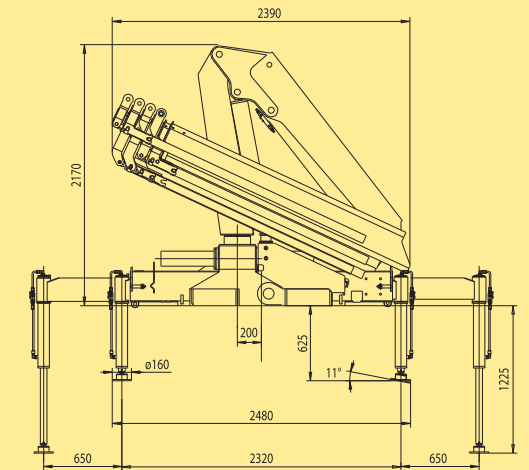
## HB 110

- Cross controls (No with radio remote control)
- Load limiting device (With radio remote control)
- Hexagonal section extensions
- Independent extension cylinders
- Flanged valves
- Assembly kit
- Designed in accordance with: EN12999-DIN15018
- Fatigue test classification: B3
- Oil tank
- Manually opening stabilizers
- Fixed stabilizer cylinders
- Swivel stabilizer foot
- Proportional pressure transducer on main cylinder (With radio remote control)
- 90%-100% light visible from all around the crane (With radio remote control)
- LCS (Lift Control System)



### HB110 E3

kg	4935	4150	2120	1440	1100	865
m	1,85	2,20	4,30	6,04	7,84	9,70



### HB 110 X

#### CAN-BUS



Pressure compensated control valve:  
HAWE PSL2

- Multifunction remote control
- Protected against radio interference
- Move around the truck freely

### EES Extra Extension Speed

A special regenerative valve reuses oil during extension, ensuring an incredibly high speed without compromising the safety of the crane.

Truck-mounted cranes