

**HA SERIES, THE PERFECT SOLUTION
FOR APPLICATIONS WITH LIGHT VEHICLES**



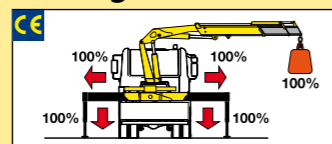
TELESCOPIC CRANE – COMPACT, LIGHT AND EASY TO USE

HA 70

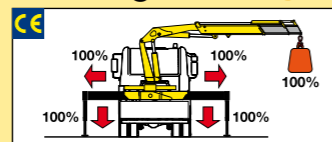

ACCESSORIES

- Load limiting device (No CE)
- Supplementary elements activations
- Mechanical rotation limitation (No CE)
- Winch
- Manual extensions
- Turning stabilizers
- Top seat
- Operator Full Protection
- Manually extra extensible stabilizers
- Hydraulic extra extensible stabilizers
- Extra cross beams
- "Green" Oil*

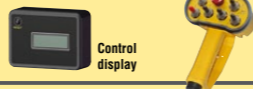
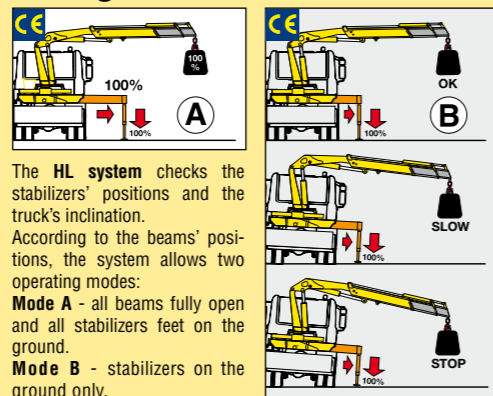
*) Eco-friendly


STABILITY CONTROL SYSTEMS (CE)
HM System


The **HM System** integrated in the load limiting device checks the stabilizers' positions. Only when all beams are fully open and all stabilizers are on the ground the crane can operate and lift loads.


HML System X


The **HML System** integrated in the load limiting device checks the stabilizers' positions. Only when all beams are fully open and all stabilizers are on the ground the crane can operate and lift loads.

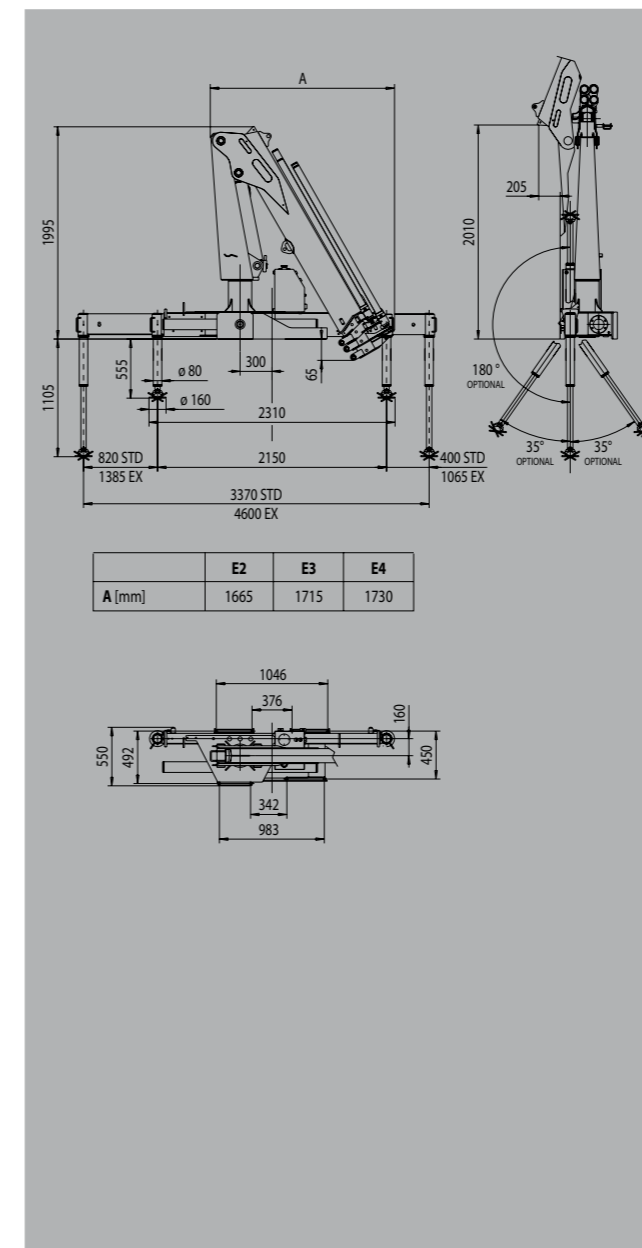
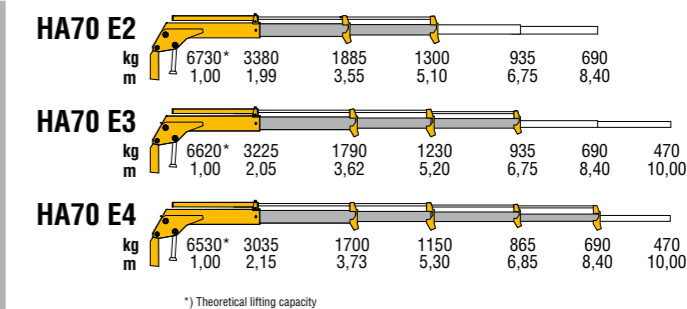

HL System X


The **HL system** checks the stabilizers' positions and the truck's inclination. According to the beams' positions, the system allows two operating modes:
Mode A - all beams fully open and all stabilizers feet on the ground.
Mode B - stabilizers on the ground only.

In **mode A**: the load limiting device stops the crane when the crane reaches 100% of the nominal capacity.
 In **mode B**: a dedicated sensor monitors the truck's inclination. The load limiting device stops the crane before it reaches an inclination angle dangerous for stability, or when the crane reaches its nominal capacity.


HA 70 X


- Compact dimensions and reduced weight
- Proportional speed control of any single movement
- Stabilizer control by radio

TECHNICAL INFORMATION HA 70
DIMENSIONS (MM)

LOAD DIAGRAMS

STANDARD FEATURES

- Designed in accordance with EN12999
- Design class: HC1-HD4
- Load limiting device (CE)
- Hexagonal section extensions
- Independent extension cylinders
- Flanged valve
- Assembly kit
- Oil tank
- Fittings SAE-JIC
- Sliding pads on telescopic extensions
- Self-lubricating bushings
- Fixed stabilizer cylinders
- Light indicator for correct stabilizer stowing (CE)
- Mechanical rotation limitation (CE) (No with HRCS)
- Dual controls (No with radio remote control)
- Swivel stabilizer foot
- Proportional pressure transducer on main cylinder (CE)

TECHNICAL SPECIFICATIONS

		HA 70 E2	HA 70 E3	HA 70 E4
Lifting moment	tm	6,73	6,62	6,53
Max. vertical reach	m	7,80	9,30	10,9
Slewing angle	°	387	387	387
Slewing time	s/180°	15	15	15
Max. working heel	°	4	4	4
Working pressure	bar	260	260	260
Oil tank capacity	l	35	35	35
Max. oil flow	l/m	18	18	18
Standard crane weight (without stabilizers)	kg	780	840	900

110 countries
+3,500 employees
20,000 customers
+30 subsidiaries
12 production facilities



Hyva is a leading provider of innovative and highly efficient transport solutions for commercial vehicles used in transport, construction, mining, materials handling and environmental service industries.

Founded in 1979 in the Netherlands, the company has a global presence with more than 30 wholly owned subsidiaries, extraordinary service coverage and 12 manufacturing facilities in Brazil, China, Europe and India.

For more information on Hyva, please visit www.hyva.com

or follow us on:



Hyva Holding B.V.
Antonie van Leeuwenhoekweg 37
2408 AK Alphen aan den Rijn
The Netherlands
Telephone: +31 (0)172 - 42 35 55
Telefax: +31 (0)172 - 42 08 80
info@hyva.com
www.hyva.com



**Quality and
environmental certified**

DEALER STAMP