



**INCREASE PRODUCTIVITY, EFFICIENCY
AND SAFETY OF HARVESTING
FFB LINE**

KEY BENEFITS

Easy and Safe



Easy to use and maintain

All the greasing points are in an easy to access position.

4 functions control valve by Walvoil



Cable controls

Connection by cable controls allow an easy installation and a higher safety for the driver.

7 functions control valve by Hydrocontrol



Strong and reliable



Structural design in accordance with: EN12999



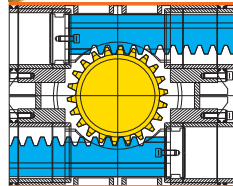
Reinforced rack, pinion and gear

(for HB11 - HB16)
Heavy duty application and long life resistance.



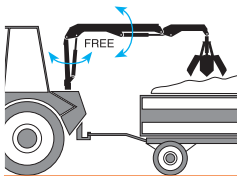
Hexagonal boom

The use of this technology brings superior performance, reduced maintenance, and less adjustment.



Double rack and pinion heavy duty slewing

(for HB50 - HB50S) The use of two racks spread the force across twice as many teeth on the pinion. Slewing has more strength for difficult situations.



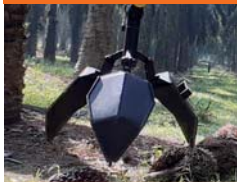
Floating device

Free boom movements to follow field inclination during transport.

Internal extension cylinder (for HB50)



Key attachments



3 jaws grab

Self weight: 35 kg
Capacity: 50 dm³



Box grab

Special attachment for bulk material.



4 jaws grab

Self weight: 75 kg
Capacity: 100 dm³



EFB (Empty Fruit Bunch) grab

Self weight: 60 kg
Capacity: 120 dm³

Turnkey solution



Piston Pump & Trac Power

High speed performance for mid-high size models.



Stabilizers

(for HB50)
Allow higher stability of the tractor during loading/unloading operation.



Oil tank

Steel oil tank made to be installed on the back of the tractor including oil filter and level indicators

THE RIGHT MODEL FOR EVERY APPLICATION

Single fruit collection

HB10S FFB



HB11 FFB



Multiple fruit collection

HB16 FFB



EFB Collection



Bulk material

HB20 FFB



HB50 FFB



THE MECHANIZED HARVESTING ADVANTAGE



Fruit pickers



Harvest time



Mechanized harvesting



Harvest time



- **Faster operation and reduced time to market**
- **Quick investment payback**
- **Increased work environment safety and health**





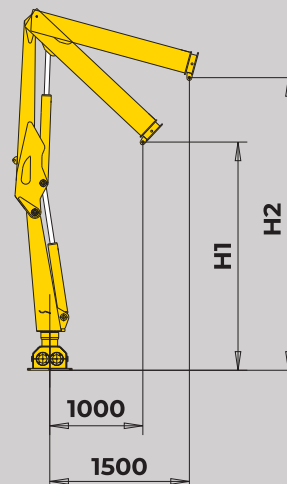
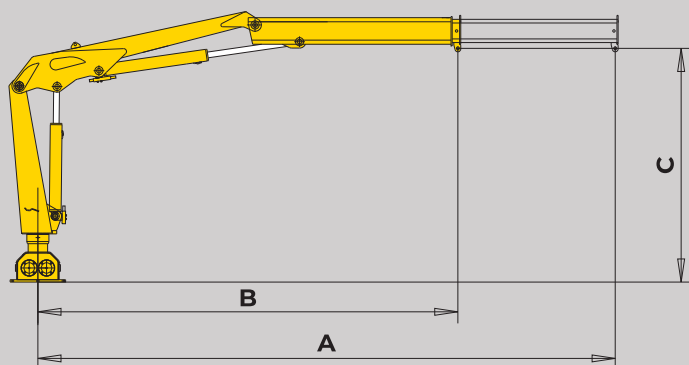
FEATURES

MODELS	HB10S	HB11	HB16	HB20	HB50
Structural design in accordance with: EN12999	●	●	●	●	●
Quality ISO9001:2008 certified	●	●	●	●	●
Easy to use and maintain	●	●	●	●	●
4 functions control valve by Walvoil	●	●	●	●	
7 functions control valve by Hydrocontrol					●
Rack and Pinion heavy duty slewing	●	●	●	●	
Double rack and pinion heavy duty slewing					●
Cable controls	○	○	○	○	
Safety valves on cylinders	○	○	○	○	●
Floating device	●	●	●	●	●
Internal rubber hoses	●	●	●	●	
Tenifer QPQ treatment on pins	●	●	●	●	●
Hexagonal boom	●	●	●	●	●
Internal extension cylinder					●
3 Jaws grab	○	○	○	○	
4 jaws grab			○	○	
Box grab					○
EFB grab		○	○	○	○
Oil Tank	○	○	○	○	●
Hyva Piston pump	○	○	○	○	●
Trac Power	○	○	○	○	○
Stabilizers					●
(M) Manual extension (weight kg 10)		○			

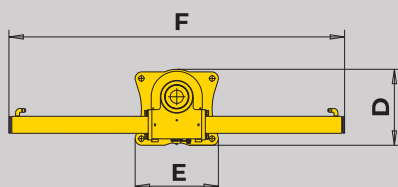
● Standard ○ Optional

TECHNICAL INFORMATION **FFB** LINE

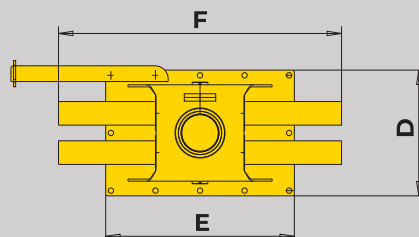
Dimensions (mm)



HB10S FFB
HB11 FFB
HB16 FFB
HB20 FFB



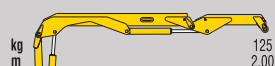
HB50 FFB



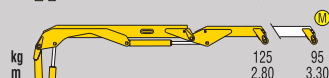
	HB10S	HB11	HB16	HB20	HB50
A	-	3300	-	-	5090
B	2000	2800	2800	3800	3730
C	1240	1190	1190	1477	2020
D	279	290	290	372	440
E	270	270	270	310	720
F	1280	1280	1280	936	1080
H1	1287	2048	2048	1150	2338
H2	2515	2426	2426	1450	2940

Load diagrams

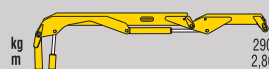
HB10S FFB



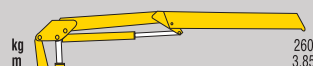
HB11 FFB



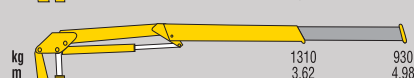
HB16 FFB



HB20 FFB



HB50 FFB



M Manual extension (weight kg 10)

Technical specifications - EN12999

MODELS	LIFTING MOMENT	SLEWING ANGLE	SLEWING TIME	WORKING PRESSURE	CRANE WEIGHT WITHOUT MANUAL EXTENSION	OIL FLOW	RECOMMENDED TRACTOR
	tm	°	s/180°	bar	kg	l/min	hp
HB10S FFB	0,25	330	4	70	168	12	Crawler/super bull
HB11 FFB	0,35	330	4	90	195	12	25 - 65
HB16 FFB	0,81	330	4	160	198	12	25 - 65
HB20 FFB	0,90	370	4	135	202	12	50 +
HB50 FFB	4,74	380	18	275	675	15	80

110 countries
+3,500 employees
20,000 customers
+30 subsidiaries
12 production facilities



Hyva is a leading provider of innovative and highly efficient transport solutions for commercial vehicles used in transport, construction, mining, materials handling and environmental service industries.

Founded in 1979 in the Netherlands, the company has a global presence with more than 30 wholly owned subsidiaries, extraordinary service coverage and 12 manufacturing facilities in Brazil, China, Europe and India.

For more information on Hyva, please visit www.hyva.com

or follow us on:



Hyva Holding B.V.
Antonie van Leeuwenhoekweg 37
2408 AK Alphen aan den Rijn
The Netherlands
Telephone: +31 (0)172 - 42 35 55
Telefax: +31 (0)172 - 42 08 80
info@hyva.com
www.hyva.com



**Quality and
environmental certified**

DEALER STAMP