

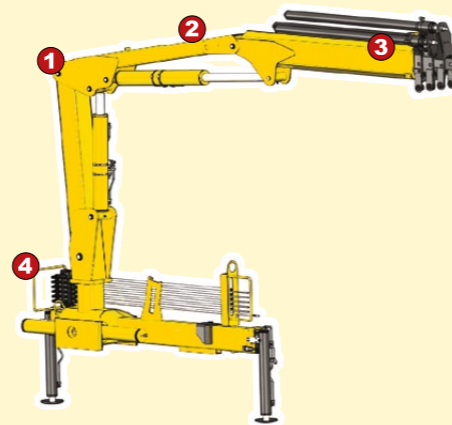


**CRANES WITH INCREASED STRENGTH WITH
REDUCED WEIGHT AND SMALL SIZE SUITABLE FOR
LIGHT TRUCKS
HV 27**



ACCESSORIES

- Supplementary elements activation
- Assembly kit
- Extra cross beams
- Manual extensions
- "Green" Oil*



- 1 Simplified structure thanks to one-piece high-tensile steel tubing (up to 40% weight saving).**
- 2 Higher load capacity with extensions retracted.**
- 3 Less installation space required due to in-line second boom.**
- 4 Lower hydraulic pressure requested:**
 - Only gear pump necessary
 - Less stress on the crane's components
 - Less heating.



Reduced repair cost, thanks to innovations like a replaceable column pinion

High elevation angle

Smaller installation space required



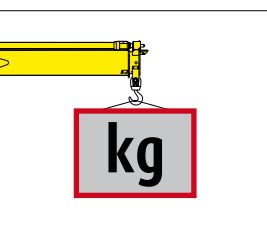
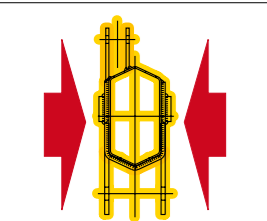
Inline second boom with these advantages:

1. Higher resistance - the boom of this crane only needs to carry the weight of the load, but standard offset booms are also subjected to torsional stress.

2. Less weight - the absence of the offset results in a lighter boom.

3. Small dimensions - the absence of the offset makes the boom more compact.

Higher load capacity with closed horizontal boom

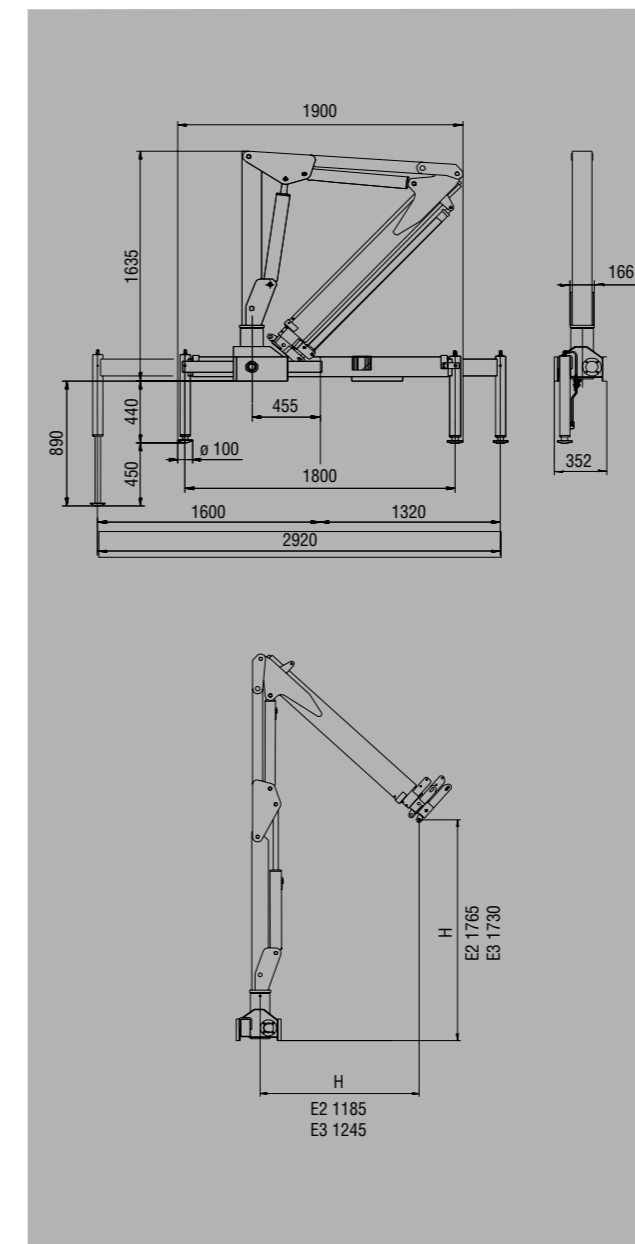


+ 12%

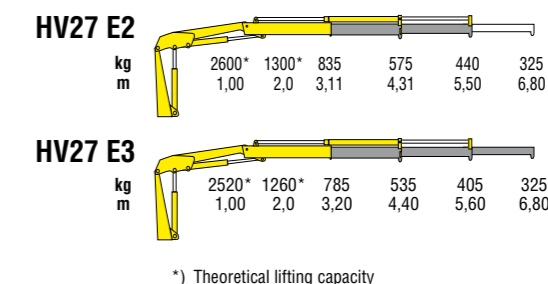


TECHNICAL INFORMATION HV27

DIMENSIONS (MM)



LOAD DIAGRAMS



STANDARD FEATURES

Designed in accordance with: EN12999:2020 + EN13849
Designed class: HC1 - HD4

- Dual-side controls
- Hexagonal booms
- Sliding pads on telescopic extensions
- Self-lubricating bushings
- Manually opening stabilizers
- Swivel stabilizer foot (CE)
- Sensor for correct stowing of the crane (CE)
- Mechanical rotation limitation (CE)
- Light indicator for correct stabilizer stowing (CE)
- Oil tank

TECHNICAL SPECIFICATIONS

		HV 27 E2	HV 27 E3
Lifting moment	tm	2,60	2,52
Max. vertical reach	m	7,93	9,19
Slewing angle	°	370	370
Slewing time	s/180°	13	13
Max. working heel	°	4	4
Working pressure	bar	205	205
Oil tank capacity	l	17,5	17,5
Max. oil flow	l/m	10	10
Standard crane weight (without stabilizers)	kg	375	405

110 countries
+3,500 employees
20,000 customers
+30 subsidiaries
14 production facilities



Hyva is a leading provider of innovative and highly efficient transport solutions for commercial vehicles used in transport, construction, mining, materials handling and environmental service industries.

Founded in 1979 in the Netherlands, the company has a global presence with more than 30 wholly owned subsidiaries, extraordinary service coverage and 14 manufacturing facilities in Brazil, China, Europe and India.

For more information on Hyva, please visit www.hyva.com

or follow us on:



Hyva Holding B.V.
Antonie van Leeuwenhoekweg 37
2408 AK Alphen aan den Rijn
The Netherlands
Telephone: +31 (0)172 - 42 35 55
Telefax: +31 (0)172 - 42 08 80
info@hyva.com
www.hyva.com



**Quality and
environmental certified**

DEALER STAMP