



**ARTICULATED CRANES WITH ULTIMATE PRECISION AND  
LIFTING CAPACITY**

**HC 361 X**



### ACCESSORIES

- Automatic rotating stabilizers
- Assembly kit
- Supplementary elements activations (1)
- Winch
- Manual extensions
- One-shot lubrication
- Oil cooler
- Top seat
- Operator Full Protection
- Working lights
- Radio remote controlled stabilizers

### CRANE NEGATIVE ANGLE

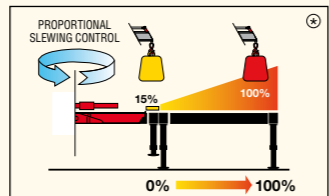
Between the column/first boom and first boom/second boom, a negative angle can be obtained with this system.



### CRANE CONTROL SYSTEM



**P-CLASS**



- Proportional stabilizers control
- Proportional slewing control
- Truck side independent

\*) The percentages present in the pictures are merely examples and they have no bearing on the cranes' real lifting capacities. The cranes' real lifting capacity will depend on truck's stability.

### HUMAN MACHINE INTERFACE



**SMART TOP MONITOR 7"**

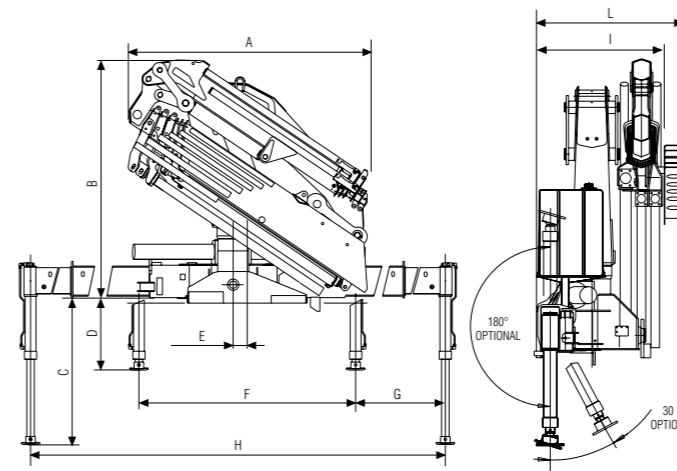


**Up to 16 languages available into the software.** Top choice available for the range. Data statistics and crane management, all included into a 7" TFT monitor giving to the operator a higher level of awareness of the crane.



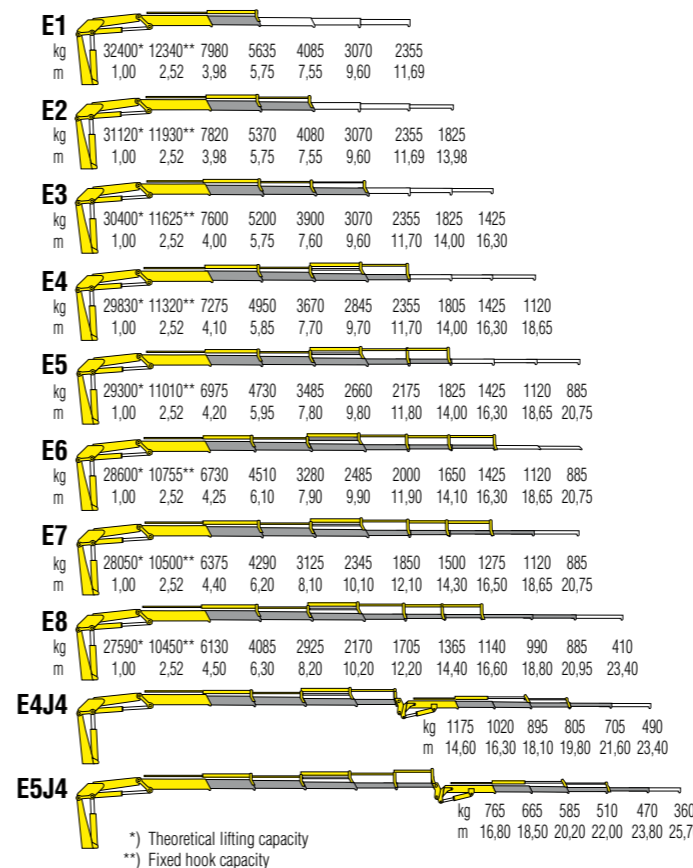
## TECHNICAL INFORMATION HC361 X

### Dimensions (mm)



|          | E1   | E2   | E3   | E4   | E5   | E6   | E7   | E8   | E4J4 | E5J4 |
|----------|------|------|------|------|------|------|------|------|------|------|
| <b>A</b> | 2500 | 2500 | 2500 | 2500 | 2500 | 2500 | 2500 | 2530 | 2535 | 2545 |
| <b>B</b> | 2355 | 2355 | 2355 | 2355 | 2355 | 2355 | 2355 | 2355 | 2355 | 2355 |
| <b>C</b> | 1486 | 1486 | 1486 | 1486 | 1486 | 1486 | 1486 | 1486 | 1486 | 1486 |
| <b>D</b> | 694  | 694  | 694  | 694  | 694  | 694  | 694  | 694  | 694  | 694  |
| <b>E</b> | 150  | 150  | 150  | 150  | 150  | 150  | 150  | 150  | 150  | 150  |
| <b>F</b> | 2300 | 2300 | 2300 | 2300 | 2300 | 2300 | 2300 | 2300 | 2300 | 2300 |
| <b>G</b> | 1950 | 1950 | 1950 | 1950 | 1950 | 1950 | 1950 | 1950 | 1950 | 1950 |
| <b>H</b> | 6200 | 6200 | 6200 | 6200 | 6200 | 6200 | 6200 | 6200 | 6200 | 6200 |
| <b>I</b> | 1170 | 1170 | 1170 | 1170 | 1170 | 1170 | 1300 | 1300 | 1330 | 1330 |
| <b>L</b> | 1330 | 1330 | 1330 | 1330 | 1330 | 1330 | -    | -    | 1330 | 1330 |

### Load diagrams

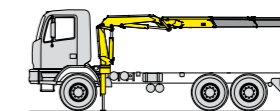


### Standard features

**Designed in accordance with EN12999+EN13849**

**Design class: HC1-HD5**

- Multifunctional radio remote control
- Sauer Danfoss PVG32
- P-LCS Proportional Lift Control System
- Flanged valves
- Manually extendable stabilizers
- Fixed stabilizer cylinders
- Swivel stabilizer foot
- Centralized greasing system
- EES Extra Extension Speed
- SDS Smooth Descent System
- TCU Total Control Unit
- LAS Liftrod Articulating System
- P Class - Crane Control System (CE)
- Smart Top Monitor - Human Machine Interface (CE)



**Recommended truck  
M.T.T. ton 18 - G.V.W. ton 18**

### CRANE CONTROLS



**LCD REMOTE CONTROL**



Each transmitter is equipped with 8 ergonomic proportional levers (6 for Scanreco mini) to control up to 8 functions of the crane. Using two hands, the operator can move 2-3-4 functions at once. This ensure more speed in loading or unloading operations with high precision.



**GRAPHIC REMOTE CONTROL**



Top visualization on 3" graphic display on the remote transmitter. Improved crane data visualization and crane control. Top level class of offer in the range.



### RADIO REMOTE CONTROL OF STABILIZER

This option offers fast and ergonomic operation of the stabilizers directly from the radio remote control.



### Technical specifications - EN12999 - HC1-HD5

|                       |              | E1   | E2   | E3   | E4   | E5   | E6   | E7   | E8    | E4J4 | E5J4 |
|-----------------------|--------------|------|------|------|------|------|------|------|-------|------|------|
| Lifting Moment        | <b>tm</b>    | 32,4 | 31,1 | 30,4 | 29,8 | 29,3 | 28,6 | 28,0 | 27,5  | -    | -    |
| Slewing Angle         | <b>°</b>     | 397  | 397  | 397  | 397  | 397  | 397  | 397  | 397   | 397  | 397  |
| Working pressure      | <b>bar</b>   | 310  | 310  | 310  | 310  | 310  | 310  | 310  | 310   | 310  | 310  |
| Oil tank capacity     | <b>l</b>     | 160  | 160  | 160  | 160  | 160  | 160  | 160  | 160   | 160  | 160  |
| Max Oil flow          | <b>l/min</b> | 45   | 45   | 45   | 45   | 45   | 45   | 45   | 45    | 45   | 45   |
| Max lifting height    | <b>m</b>     | 9,9  | 11,8 | 13,8 | 15,8 | 18,1 | 20,4 | 22,7 | 25,00 | 25,7 | 28,0 |
| Standard crane weight | <b>kg</b>    | 3050 | 3280 | 3500 | 3730 | 3900 | 4060 | 4180 | 4300  | 4570 | 4740 |

**110 countries**  
**+3,500 employees**  
**20,000 customers**  
**+30 subsidiaries**  
**14 production facilities**



**Hyva is a leading provider of innovative and highly efficient transport solutions for commercial vehicles used in transport, construction, mining, materials handling and environmental service industries.**

**Founded in 1979 in the Netherlands, the company has a global presence with more than 30 wholly owned subsidiaries, extraordinary service coverage and 14 manufacturing facilities in Brazil, China, Europe and India.**

For more information on Hyva, please visit [www.hyva.com](http://www.hyva.com)

or follow us on:



**Hyva Holding B.V.**  
Antonie van Leeuwenhoekweg 37  
2408 AK Alphen aan den Rijn  
The Netherlands  
Telephone: +31 (0)172 - 42 35 55  
Telefax: +31 (0)172 - 42 08 80  
[info@hyva.com](mailto:info@hyva.com)  
[www.hyva.com](http://www.hyva.com)



**Quality and  
environmental certified**

**DEALER STAMP**