



**ARTICULATED CRANES WITH ULTIMATE PRECISION AND
LIFTING CAPACITY**

HC 331 X



ACCESSORIES

- Automatic rotating stabilizers
- Assembly kit
- Supplementary elements activations (1)
- Winch
- Manual extensions
- One-shot lubrication
- Oil cooler
- Top seat
- Operator Full Protection
- Working lights
- Radio remote controlled stabilizers

CRANE NEGATIVE ANGLE

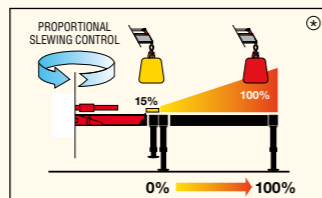
Between the column/first boom and first boom/second boom, a negative angle can be obtained with this system.



CRANE CONTROL SYSTEM



P-CLASS



- Proportional stabilizers control
- Proportional slewing control
- Truck side independent

* The percentages present in the pictures are merely examples and they have no bearing on the cranes' real lifting capacities. The cranes' real lifting capacity will depend on truck's stability.

HUMAN MACHINE INTERFACE



SMART TOP MONITOR 7"

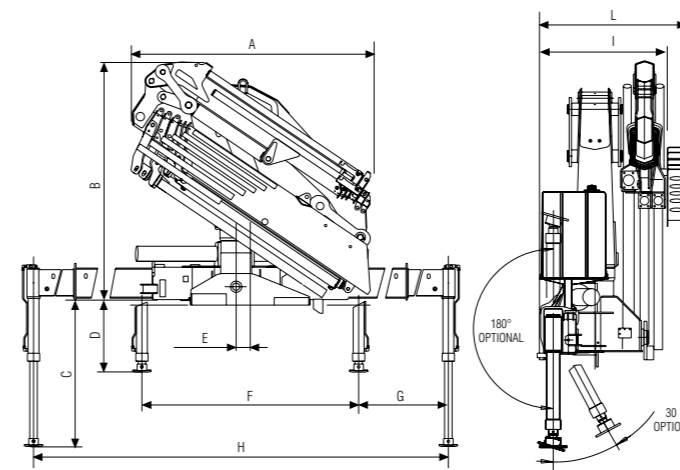


Up to 16 languages available into the software. Top choice available for the range. Data statistics and crane management, all included into a 7" TFT monitor giving to the operator a higher level of awareness of the crane.



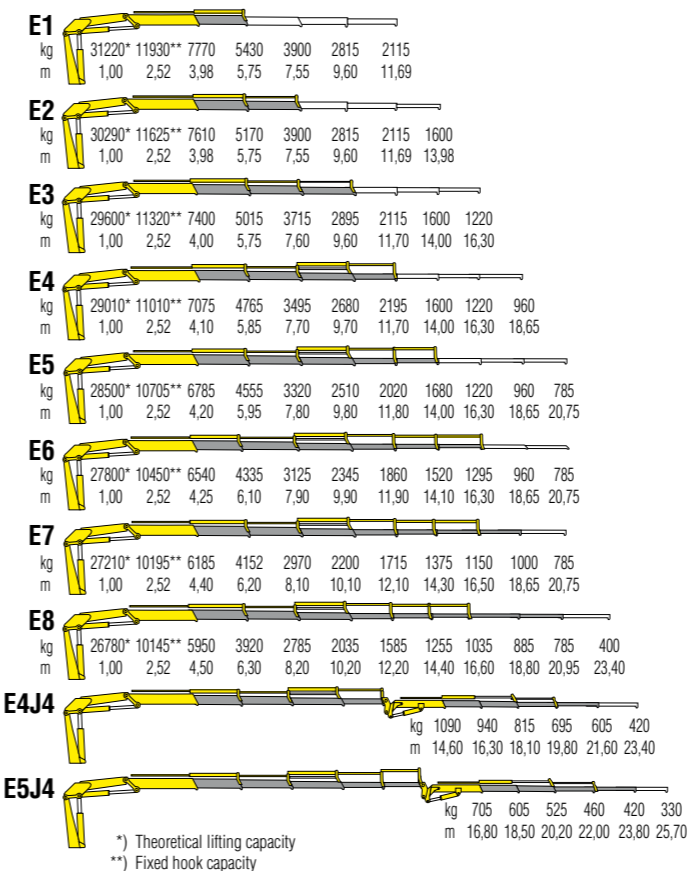
TECHNICAL INFORMATION HC331 X

Dimensions (mm)



	E1	E2	E3	E4	E5	E6	E7	E8	E4J4	E5J4
A	2500	2500	2500	2500	2500	2500	2500	2530	2535	2545
B	2355	2355	2355	2355	2355	2355	2355	2355	2355	2355
C	1486	1486	1486	1486	1486	1486	1486	1486	1486	1486
D	694	694	694	694	694	694	694	694	694	694
E	150	150	150	150	150	150	150	150	150	150
F	2300	2300	2300	2300	2300	2300	2300	2300	2300	2300
G	1950	1950	1950	1950	1950	1950	1950	1950	1950	1950
H	6200	6200	6200	6200	6200	6200	6200	6200	6200	6200
I	1170	1170	1170	1170	1170	1170	1300	1300	1330	1330
L	1330	1330	1330	1330	1330	1330	-	-	1330	1330

Load diagrams

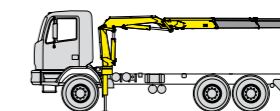


Standard features

Designed in accordance with EN12999+EN13849

Design class: HC1-HD5

- Multifunctional radio remote control
- Sauer Danfoss PVG32
- P-LCS Proportional Lift Control System
- Flanged valves
- Manually extendable stabilizers
- Fixed stabilizer cylinders
- Swivel stabilizer foot
- Centralized greasing system
- EES Extra Extension Speed
- SDS Smooth Descent System
- TCU Total Control Unit
- LAS Liftrod Articulating System
- P Class - Crane Control System (CE)
- Smart Top Monitor - Human Machine Interface (CE)



Recommended truck
M.T.T. ton 18 - G.V.W. ton 18

CRANE CONTROLS



LCD REMOTE CONTROL



Each transmitter is equipped with 8 ergonomic proportional levers (6 for Scanreco mini) to control up to 8 functions of the crane. Using two hands, the operator can move 2-3-4 functions at once.

This ensure more speed in loading or unloading operations with high precision.



GRAPHIC REMOTE CONTROL



Top visualization on 3" graphic display on the remote transmitter. Improved crane data visualization and crane control. Top level class of offer in the range.



RADIO REMOTE CONTROL OF STABILIZER

This option offers fast and ergonomic operation of the stabilizers directly from the radio remote control.



Technical specifications - EN12999 - HC1-HD5

		E1	E2	E3	E4	E5	E6	E7	E8	E4J4	E5J4
Lifting Moment	tm	31,2	30,2	29,6	29,0	28,5	27,8	27,2	26,7	-	-
Slewing Angle	°	397	397	397	397	397	397	397	397	397	397
Working pressure	bar	300	300	300	300	300	300	300	300	300	300
Oil tank capacity	l	160	160	160	160	160	160	160	160	160	160
Max Oil flow	l/min	45	45	45	45	45	45	45	45	45	45
Max lifting height	m	9,9	11,8	13,8	15,8	18,1	20,4	22,7	25,00	25,7	28,0
Standard crane weight	kg	3050	3280	3500	3730	3900	4060	4180	4300	4570	4740

110 countries
+3,500 employees
20,000 customers
+30 subsidiaries
14 production facilities



Hyva is a leading provider of innovative and highly efficient transport solutions for commercial vehicles used in transport, construction, mining, materials handling and environmental service industries.

Founded in 1979 in the Netherlands, the company has a global presence with more than 30 wholly owned subsidiaries, extraordinary service coverage and 14 manufacturing facilities in Brazil, China, Europe and India.

For more information on Hyva, please visit www.hyva.com

or follow us on:



Hyva Holding B.V.
Antonie van Leeuwenhoekweg 37
2408 AK Alphen aan den Rijn
The Netherlands
Telephone: +31 (0)172 - 42 35 55
Telefax: +31 (0)172 - 42 08 80
info@hyva.com
www.hyva.com



**Quality and
environmental certified**

DEALER STAMP