



ARTICULATED CRANES WITH ULTIMATE PRECISION AND LIFTING CAPACITY

HC 291 X



ACCESSORIES

- Automatic rotating stabilizers
- Assembly kit
- Supplementary elements activations (1)
- Winch
- Manual extensions
- One-shot lubrication
- Oil cooler
- Top seat
- Operator Full Protection
- Working lights
- Radio remote controlled stabilizers

CRANE NEGATIVE ANGLE

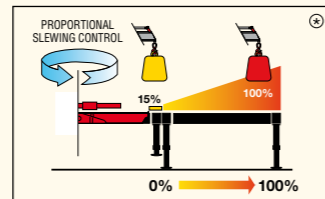
Between the column/first boom and first boom/second boom, a negative angle can be obtained with this system.



CRANE CONTROL SYSTEM



P-CLASS



- Proportional stabilizers control
- Proportional slewing control
- Truck side independent

*) The percentages present in the pictures are merely examples and they have no bearing on the cranes' real lifting capacities. The cranes' real lifting capacity will depend on truck's stability.

HUMAN MACHINE INTERFACE



SMART TOP MONITOR 7"



Up to 16 languages available into the software. Top choice available for the range. Data statistics and crane management, all included into a 7" TFT monitor giving to the operator a higher level of awareness of the crane.

CRANE CONTROLS



LCD REMOTE CONTROL



Each transmitter is equipped with 8 ergonomic proportional levers (6 for Scanreco mini) to control up to 8 functions of the crane. Using two hands, the operator can move 2-3-4 functions at once. This ensure more speed in loading or unloading operations with high precision.



GRAPHIC REMOTE CONTROL

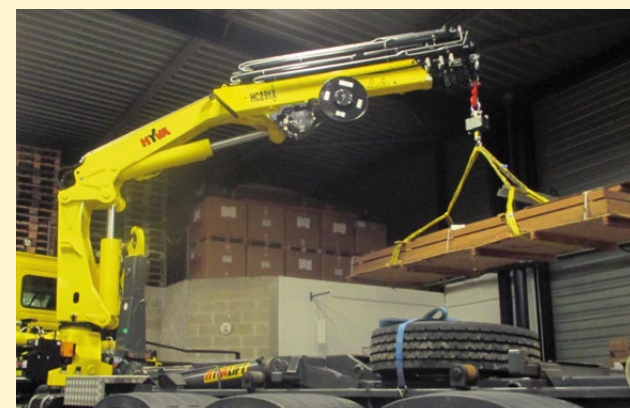


Top visualization on 3" graphic display on the remote transmitter. Improved crane data visualization and crane control. Top level class of offer in the range.



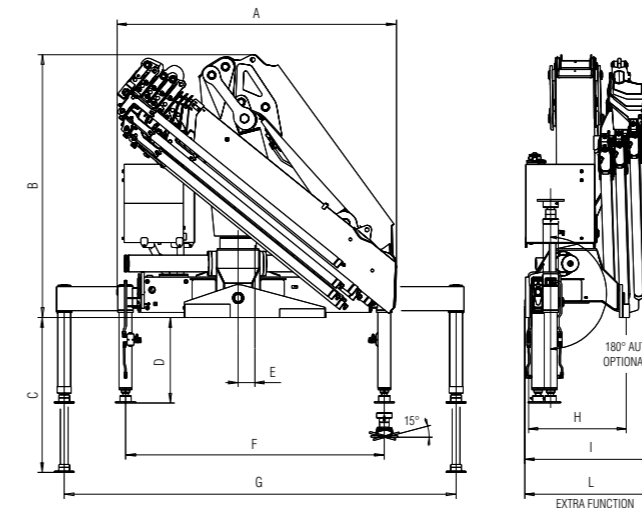
RADIO REMOTE CONTROL OF STABILIZER

This option offers fast and ergonomic operation of the stabilizers directly from the radio remote control.



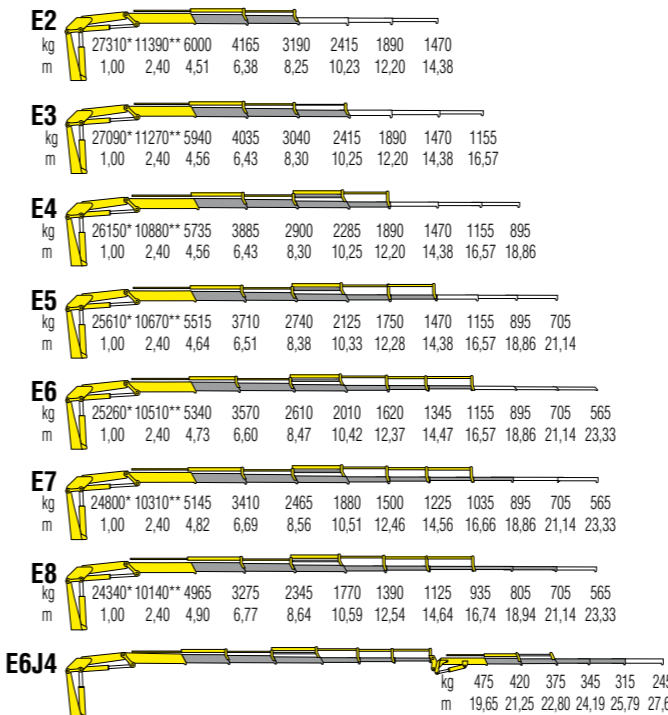
TECHNICAL INFORMATION HC291 X

Dimensions (mm)



	E2	E3	E4	E5	E6	E7	E8	E6J4
A	2510	2510	2510	2510	2510	2510	2510	2510
B	2350	2350	2350	2350	2350	2350	2350	2705
C	1500	1500	1500	1500	1500	1500	1500	1500
D	764	764	764	764	764	764	764	764
E	150	150	150	150	150	150	150	150
F	2310	2310	2310	2310	2310	2310	2310	2310
G	6610	6610	6610	6610	6610	6610	6610	6610
H	875	875	875	875	875	875	875	875
I	1010	1010	1010	1040	1060	1060	1180	-
L	1190	1190	1190	1190	1190	1250	1250	1190

Load diagrams



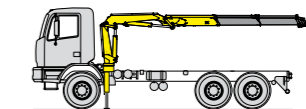
*) Theoretical lifting capacity
**) Fixed hook capacity

Standard features

Designed in accordance with EN12999+EN13849

Design class: HC1-HD4

- Cross controls
- Load limiting device
- Flanged valves
- Oil tank
- Fixed stabilizer cylinders
- Swivel stabilizer foot
- LCS Lift Control System
- EES Extra Extension Speed
- SDS Smooth Descent System
- LAS Liftrod Articulating System
- P Class - Crane Control System (CE)
- Smart Top Monitor - Human Machine Interface (CE)



Recommended truck
M.T.T. ton 18 - G.V.W. ton 18

Technical specifications - EN12999 - HC1-HD4

		E2	E3	E4	E5	E6	E7	E8	E6J4
Lifting Moment	tm	27,3	27,0	26,15	25,61	25,26	24,80	24,34	-
Slewing Angle	°	425	425	425	425	425	425	425	425
Working pressure	bar	325	325	325	325	325	325	325	325
Oil tank capacity	l	180	180	180	180	180	180	180	180
Max Oil flow	l/min	80	80	80	80	80	80	80	80
Max lifting height	m	11,9	13,8	15,8	17,9	20,1	22,4	24,7	29,1
Standard crane weight	kg	2635	2795	2950	3090	3215	3330	3430	3790

110 countries
+3,500 employees
20,000 customers
+30 subsidiaries
14 production facilities



Hyva is a leading provider of innovative and highly efficient transport solutions for commercial vehicles used in transport, construction, mining, materials handling and environmental service industries.

Founded in 1979 in the Netherlands, the company has a global presence with more than 30 wholly owned subsidiaries, extraordinary service coverage and 14 manufacturing facilities in Brazil, China, Europe and India.

For more information on Hyva, please visit www.hyva.com

or follow us on:



Hyva Holding B.V.
Antonie van Leeuwenhoekweg 37
2408 AK Alphen aan den Rijn
The Netherlands
Telephone: +31 (0)172 - 42 35 55
Telefax: +31 (0)172 - 42 08 80
info@hyva.com
www.hyva.com



**Quality and
environmental certified**

DEALER STAMP