

EDGE LINE
RAISE YOUR GAME

ARTICULATED CRANES WITH ULTIMATE PRECISION AND LIFTING CAPACITY

HC 401-HC 401K

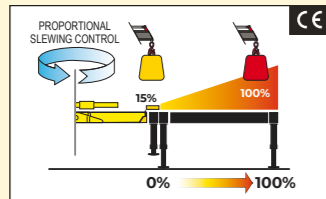




CRANE CONTROL SYSTEM



P-CLASS



- Proportional stabilizers control
- Proportional slewing control
- Truck side independent

HUMAN MACHINE INTERFACE



SMART TOP MONITOR 7"



Up to 16 languages available into the software. Top choice available for the range. Data statistics and crane management, all included into a 7" TFT monitor giving to the operator a higher level of awareness of the crane.

CRANE CONTROLS



LCD REMOTE CONTROL



Each transmitter is equipped with 8 ergonomic proportional levers (6 for Scanreco mini) to control up to 8 functions of the crane. Using two hands, the operator can move 2-3-4 functions at once. This ensures more speed in loading or unloading operations with high precision.

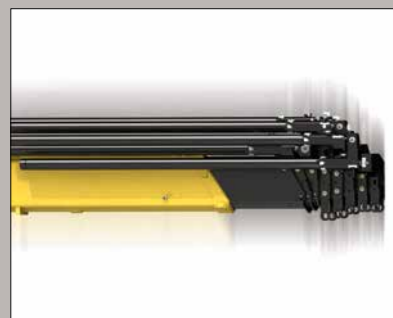


GRAPHIC REMOTE CONTROL



Top visualization on 3" graphic display on the remote transmitter. Improved crane data visualization and crane control. Top level class of offer in the range.

SDS Smooth Descent System



Uses a special counterbalance valve to reduce boom oscillation, the result for the user is incredible precision in unloading operations. **Control and precision of the movement.**

EES Extra Extension Speed



The market is always demanding more speed along with the highest possible safety. EES is the answer. Through the use of a specially designed counterbalance valve, this system increases the extension speed without affecting the crane's safety. **Save time, precise work, increase efficiency.**

SMART AND USER-FRIENDLY CONTROLS

Control station distinguished by operator comfort and user-friendly interface derived from dedicated ergonomic and user preference studies

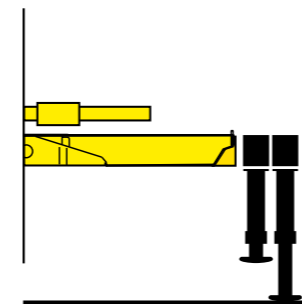


SMART TOP MONITOR 7"
Simple and quick access to all the functions and information

Vertical stabilizers levers
Safe and fast. Excellent supervision of stabilizing operation

TECHNICAL SOLUTIONS TO RAISE RELIABILITY AND SAFETY

New Stability Logic for maximum level of flexibility



- Be free to maximize the use of your crane for all stabilizers' positions.

Working flexibility: performance in any situation



- Negative angle between first/ second boom produces the most versatile crane structure available. The result is working flexibility - easier access to confined and low ceiling spaces.

Electronics mind: guaranteed in all conditions



- All electrical components have IP69K enclosures which offer complete protection against water jet and dust penetration providing higher durability and less down time.

OUR INNOVATIONS ARE CHANGING THE GAME

Solutions that are the result of smart engineering

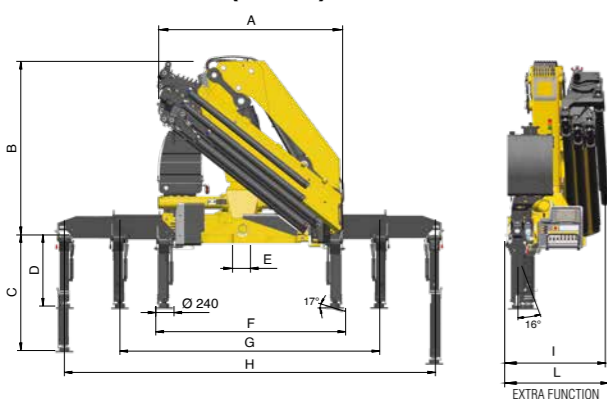


DLD DYNAMIC LOAD DIAGRAM

This system, a first on truck-mounted articulated cranes, optimises stabilisation and makes crane operation safer and more efficient, allows the driver to verify in advance the crane lifting capacity based on the truck stability. A display shows the outreach available for the load selected and the actual boom slewing position.

TECHNICAL INFORMATION HC401

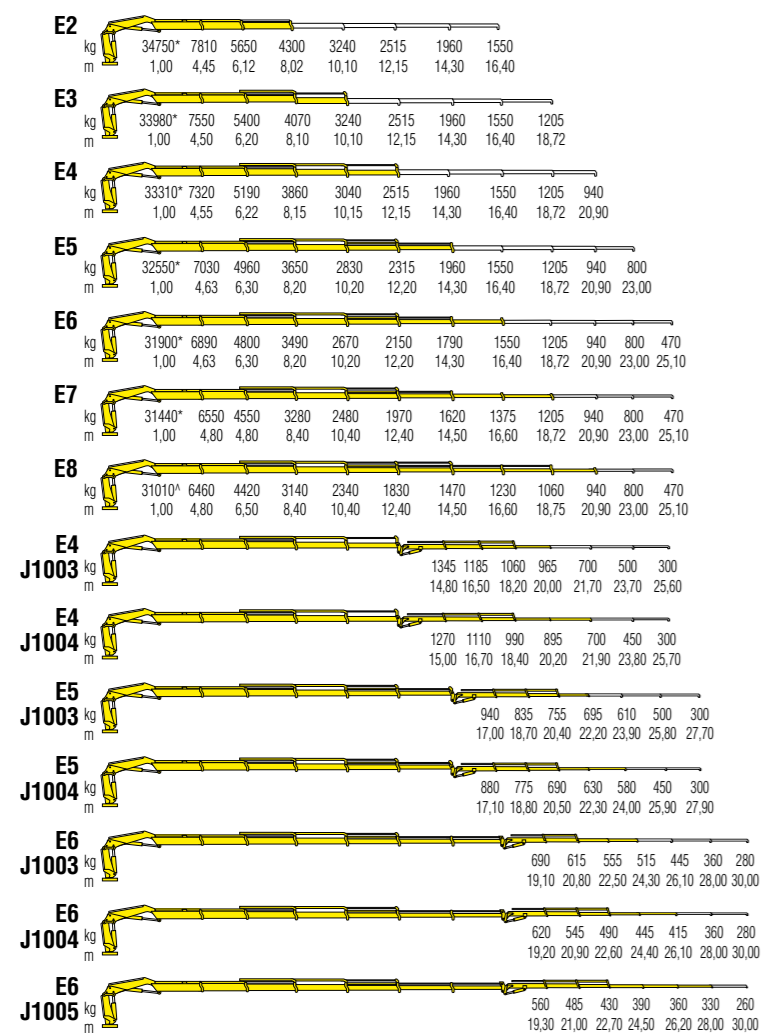
Dimensions (mm)



	E2	E3	E4	E5	E6	E7	E8
A	2500	2500	2500	2500	2500	2500	2500
B	2440	2440	2440	2440	2440	2440	2440
C	1478	1478	1478	1478	1478	1478	1478
D	892	892	892	892	892	892	892
E	100	249	249	249	249	249	249
F	2500	2500	2500	2500	2500	2500	2500
G	6000	6000	6000	6000	6000	6000	6000
H	7800	7800	7800	7800	7800	7800	7800
I	1220	1250	1250	1250	1250	1350	1350
L	-	-	-	-	-	1390	1390

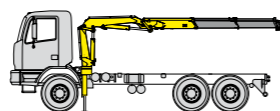
	E4J1003	E4J1004	E5J1003	E5J1004	E6J1003	E6J1004	E6J1005
A	2500	2500	2500	2500	2510	2510	2510
B	2740	2740	2720	2720	2740	2740	2740
C	1478	1478	1478	1478	1478	1478	1478
D	892	892	892	892	892	892	892
E	100	249	249	249	249	249	249
F	2500	2500	2500	2500	2500	2500	2500
G	6000	6000	6000	6000	6000	6000	6000
H	7800	7800	7800	7800	7800	7800	7800
I	-	-	-	-	-	-	-
L	1330	1330	1330	1330	1330	1330	1330

Load diagrams



Standard features

- Designed in accordance with:**
EN12999:2020 + EN13849
Design class: HC1-HD4
- Sauer Danfoss PVG32 (CE)
 - Hydrocontrol HCD4 (NO CE)
 - Load limit device
 - Flanged valves
 - Oil tank
 - Hydraulically extendable stabilizers
 - Internal stabilizer pipes
 - Fixed stabilizer cylinders
 - Swivel stabilizer foot
 - Centralized greasing system
 - EES Extra Extension Speed
 - SDS Smooth Descent System
 - LAS Liftrod Articulating System
 - P Class - Crane Control System (CE)



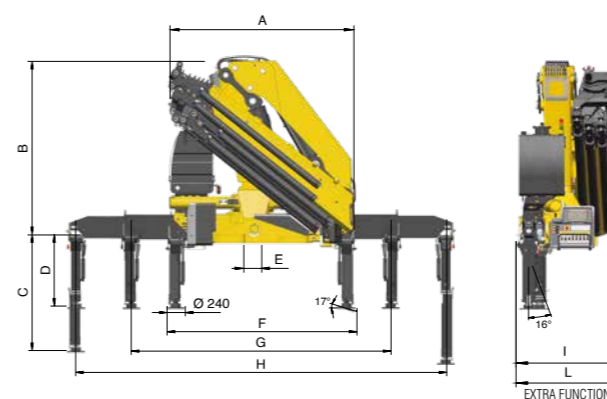
Recommended truck
M.T.T. ton 26

Technical specifications - EN12999 - HC1- HD4

	E2	E3	E4	E5	E6	E7	E8	E4J1003	E4J1004	E5J1003	E5J1004	E6J1003	E6J1004	E6J1005	
Lifting Moment	tm	34,8	34,0	33,3	32,5	31,9	31,4	31,0	19,2	19,1	16,0	15,0	13,2	11,9	10,8
Slewing Angle	°	430	430	430	430	430	430	430	430	430	430	430	430	430	430
Working pressure	bar	325	325	325	325	325	325	345	345	345	345	345	345	345	345
Oil tank capacity	l	230	230	230	230	230	230	230	2320	230	230	230	230	230	230
Max Oil flow	l/min	100	100	100	100	100	100	100	100	100	100	100	100	100	100
Max lifting height	m	12,0	14,0	16,0	18,0	20,0	22,6	24,3	26,1	26,4	28,2	28,5	30,4	32,3	32,3
Standard crane weight	kg	3850	4080	4300	4510	4700	4880	5050	4920	4990	5130	5200	5320	5390	5450

TECHNICAL INFORMATION HC401

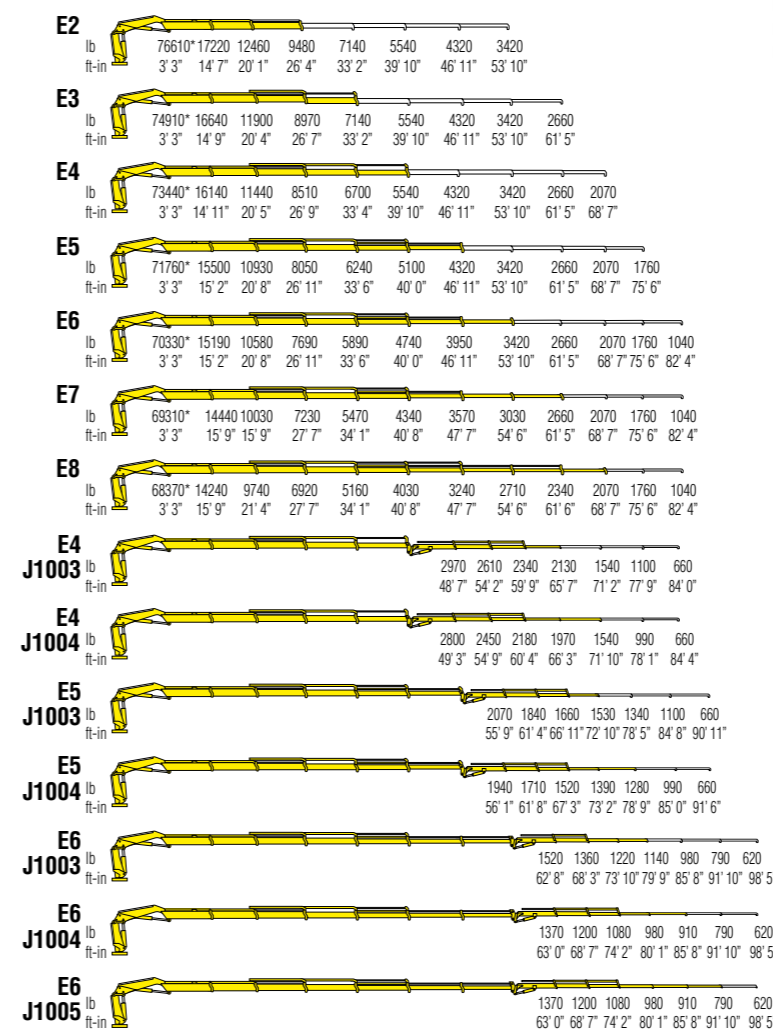
Dimensions (in)



	E2	E3	E4	E5	E6	E7	E8
A	99	99	99	99	99	99	99
B	97	97	97	97	97	97	97
C	59	59	59	59	59	59	59
D	36	36	36	36	36	36	36
E	4	4	4	4	4	4	4
F	99	99	99	99	99	99	99
G	237	237	237	237	237	237	237
H	308	308	308	308	308	308	308
I	49	50	50	50	50	54	54
L	-	-	-	-	-	55	55

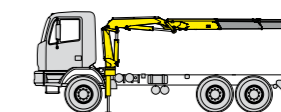
	E4J1003	E4J1004	E5J1003	E5J1004	E6J1003	E6J1004	E6J1005
A	99	99	99	99	99	99	99
B	108	108	108	108	108	108	108
C	59	59	59	59	59	59	59
D	36	36	36	36	36	36	36
E	4	4	4	4	4	4	4
F	99	99	99	99	99	99	99
G	237	237	237	237	237	237	237
H	308	308	308	308	308	308	308
I	-	-	-	-	-	-	-
L	53	53	53	53	53	53	53

Load diagrams



Standard features

- Designed in accordance with:**
EN12999:2020 + EN13849
Design class: HC1-HD4
- Sauer Danfoss PVG32 (CE)
 - Hydrocontrol HCD4 (NO CE)
 - Load limit device
 - Flanged valves
 - Oil tank
 - Hydraulically extendable stabilizers
 - Internal stabilizer pipes
 - Fixed stabilizer cylinders
 - Swivel stabilizer foot
 - Centralized greasing system
 - EES Extra Extension Speed
 - SDS Smooth Descent System
 - LAS Liftrod Articulating System
 - P Class - Crane Control System (CE)



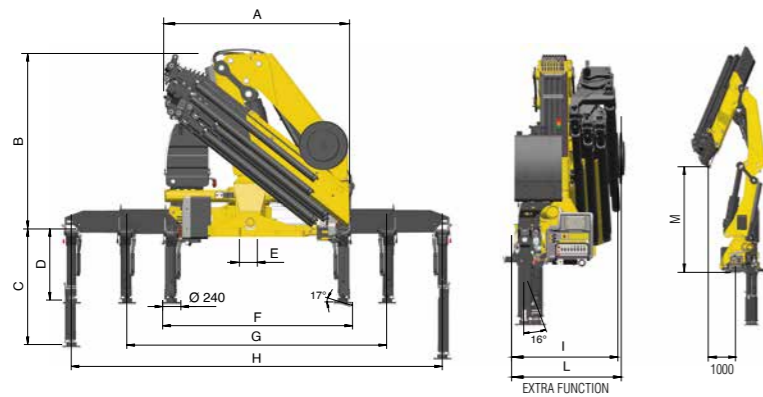
Recommended truck
G.V.W. lb 57330

Technical specifications

	E2	E3	E4	E5	E6	E7	E8	E4J1003	E4J1004	E5J1003	E5J1004	E6J1003	E6J1004	E6J1005	
Lifting Moment	lb	251700	245900	245900	235100	240900	227100	235100	143900	230700	227100	224200	143900	138100	108500
Slewing Angle	°	430	430	430	430	430	430	430	430	430	430	430	430	430	430
Working pressure	psi	4710	4710	4710	4710	4710	4710	4710	5000	5000	5000	5000	5000	5000	5000
Oil tank capacity	gal	60,8	60,8	60,8	60,8	60,8	60,8	60,8	60,8	60,8	60,8	60,8	60,8	60,8	60,8
Max Oil flow	gal/min	26,4	26,4	26,4	26,4	26,4	26,4	26,4	26,4	26,4	26,4	26,4	26,4	26,4	26,4
Max lifting height	ft in	39' 4"	45' 11"	52' 6"	59' 1"	65' 7"	74' 2"	81' 4"	79' 9"	85' 8"	86' 7"	92' 6"	93' 6"	99' 9"	106' 0"
Standard crane weight	lb	8490	8995	9480	9945	10360	10760	11135	10845	11000	11310	11465	11730	11885	12015

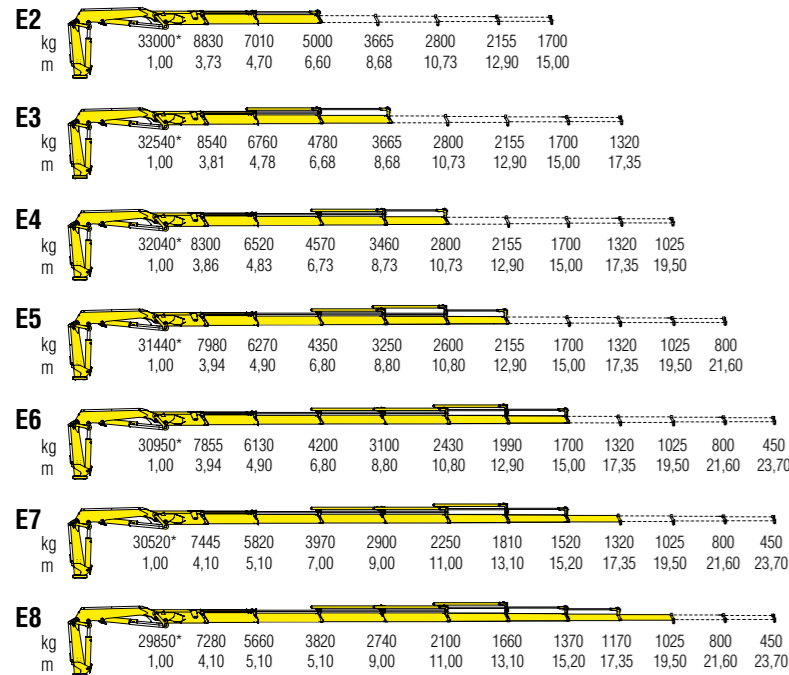
TECHNICAL INFORMATION HC401 K

Dimensions (mm)



	E2	E3	E4	E5	E6	E7	E8
A	2500	2500	2500	2500	2500	2500	2500
B	2440	2440	2440	2440	2440	2440	2440
C	1478	1478	1478	1478	1478	1478	1478
D	892	892	892	892	892	892	892
E	100	100	100	100	100	100	100
F	2500	2500	2500	2500	2500	2500	2500
G	6000	6000	6000	6000	6000	6000	6000
H	7800	7800	7800	7800	7800	7800	7800
I	1195	1240	1240	1240	1240	1350	1350
L	-	-	-	-	-	1405	1405
M	3067	3007	2946	2884	2910	2705	2687

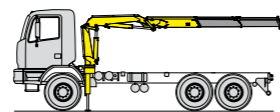
Load diagrams



*) Theoretical lifting capacity

Standard features

- Designed in accordance with:**
EN12999:2020 + EN13849
Design class: HC1-HD4
- Sauer Danfoss PVG32 (CE)
 - Hydrocontrol HCD4 (NO CE)
 - Load limit device
 - Flanged valves
 - Oil tank
 - Hydraulically extendable stabilizers
 - Internal stabilizer pipes
 - Fixed stabilizer cylinders
 - Swivel stabilizer foot
 - Centralized greasing system
 - EES Extra Extension Speed
 - SDS Smooth Descent System
 - LAS Liftrod Articulating System
 - P Class - Crane Control System (CE)



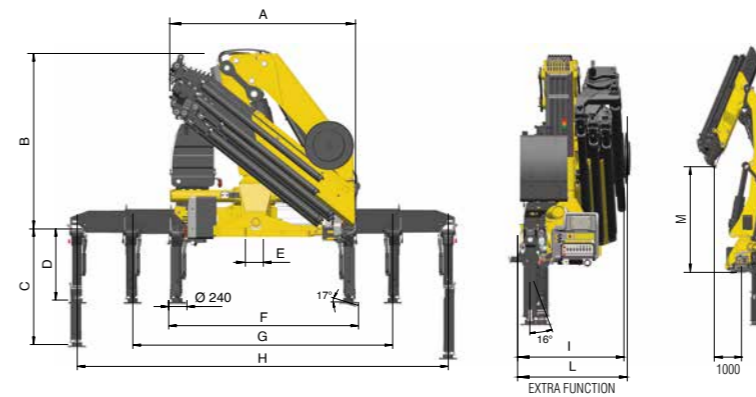
Recommended truck
M.T.T. ton 26

Technical specifications

		E2	E3	E4	E5	E6	E7	E8
Lifting Moment	tm	32,9	32,5	32,0	31,4	30,9	30,5	29,8
Slewing Angle	°	430	430	430	430	430	430	430
Working pressure	bar	325	325	325	325	325	325	325
Oil tank capacity	l	230	230	230	230	230	230	230
Max Oil flow	l/min	100	100	100	100	100	100	100
Max lifting height	m	10,6	12,7	14,8	16,9	19,0	21,3	23,5
Standard crane weight	kg	3750	3980	4200	4410	4600	4780	4950

TECHNICAL INFORMATION HC401 K

Dimensions (in)



	E2	E3	E4	E5	E6	E7	E8
A	99	99	99	99	99	99	99
B	97	97	97	97	97	97	97
C	59	59	59	59	59	59	59
D	36	36	36	36	36	36	36
E	4	4	4	4	4	4	4
F	99	99	99	99	99	99	99
G	237	237	237	237	237	237	237
H	308	308	308	308	308	308	308
I	48	48	49	49	49	54	54
L	-	-	-	-	-	56	56
M	121	119	116	114	115	107	106

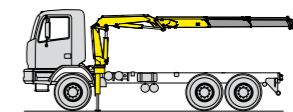
Load diagrams



*) Theoretical lifting capacity

Standard features

- Designed in accordance with:**
EN12999:2020 + EN13849
Design class: HC1-HD4
- Sauer Danfoss PVG32 (CE)
 - Hydrocontrol HCD4 (NO CE)
 - Load limit device
 - Flanged valves
 - Oil tank
 - Hydraulically extendable stabilizers
 - Internal stabilizer pipes
 - Fixed stabilizer cylinders
 - Swivel stabilizer foot
 - Centralized greasing system
 - EES Extra Extension Speed
 - SDS Smooth Descent System
 - LAS Liftrod Articulating System
 - P Class - Crane Control System (CE)



Recommended truck
G.V.W. lb 57330

Technical specifications

		E2	E3	E4	E5	E6	E7	E8
Lifting Moment	lb ft	235100	231500	231500	227100	223500	220600	227100
Slewing Angle	°	430	430	430	430	430	430	430
Working pressure	psi	4710	4710	4710	4710	4710	4710	4710
Oil tank capacity	gal	60,8	60,8	60,8	60,8	60,8	60,8	60,8
Max Oil flow	gal/min	26,4	26,4	26,4	26,4	26,4	26,4	26,4
Max lifting height	ft in	34' 9"	41' 8"	48' 7"	55' 5"	62' 4"	69' 11"	77' 1"
Standard crane weight	lb	8265	8775	9260	9720	10140	10540	10915

110 countries
+3,500 employees
20,000 customers
+30 subsidiaries
14 production facilities



Hyva is a leading provider of innovative and highly efficient transport solutions for commercial vehicles used in transport, construction, mining, materials handling and environmental service industries.

Founded in 1979 in the Netherlands, the company has a global presence with more than 30 wholly owned subsidiaries, extraordinary service coverage and 14 manufacturing facilities in Brazil, China, Europe and India.

For more information on Hyva, please visit www.hyva.com

or follow us on:



Hyva Holding B.V.
 Antonie van Leeuwenhoekweg 37
 2408 AK Alphen aan den Rijn
 The Netherlands
 Telephone: +31 (0)172 - 42 35 55
 info@hyva.com
 www.hyva.com



Quality and
environmental certified

DEALER STAMP