

**HB-R SERIES, THE PERFECT SOLUTION  
FOR APPLICATIONS WITH LARGE VEHICLES**

**LARGE, USER-FRIENDLY ARTICULATED CRANES WITH  
ULTIMATE PRECISION AND LIFTING CAPACITY**

**HB330R**



## ACCESSORIES

- Assembly kit
- Radio remote control **X**
- Manual extensions
- Supplementary elements activation (optional for all models)
- Oil cooler
- Winch
- Extra cross-beams

### **X** GENERATION Radio Remote Control

*Multifunction radio control*



Available  
for all models



Pressure compensated  
control valve:  
SAUER DANFOSS PVG32

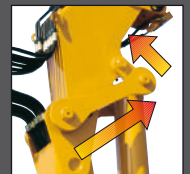
### LCS LAS

#### Lift Control System

Lift Control System increases the capacity of the crane up to 10% by reducing the speed when the crane is near its maximum lifting capacity.

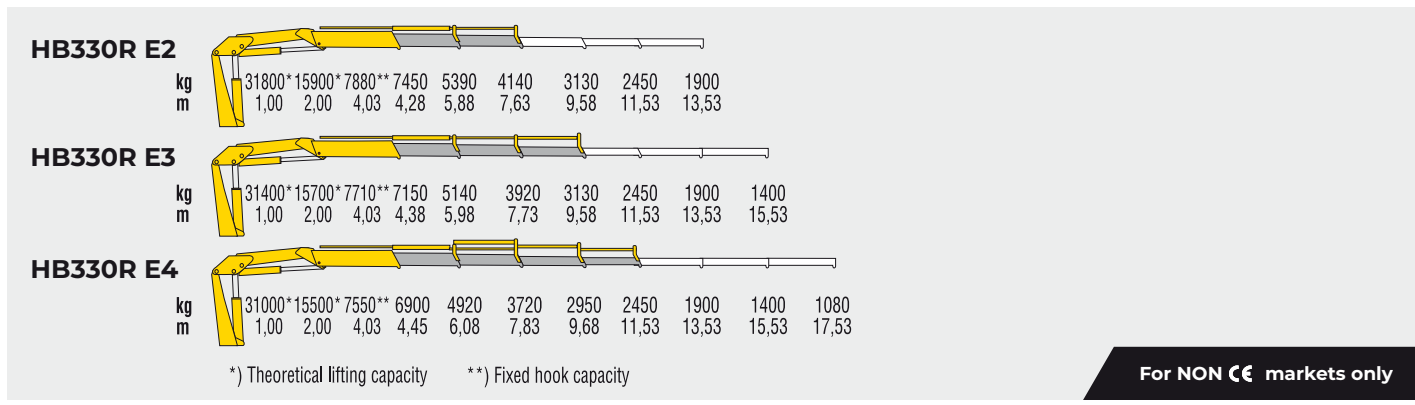
#### Liftrod Articulating System

Thanks to the connecting rods the lifting capacity of the crane is constant in all boom positions.



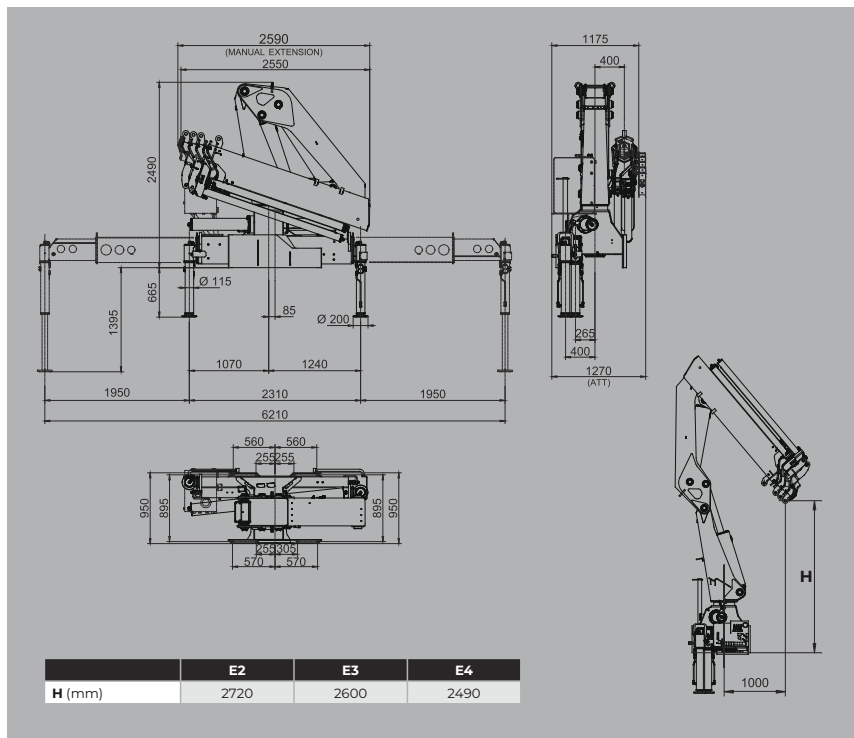
# TECHNICAL INFORMATION **HB330R**

## LOAD DIAGRAMS



For NON markets only

## DIMENSIONS (MM)



## STANDARD FEATURES

- Load limiting device
- Dual controls (NO X)
- Extensions with hexagonal section
- Independent extension cylinders
- Sliding pads on telescopic extensions
- Self-lubricating bushings
- Hydraulically extensible stabilizers
- Oil tank
- Fittings SAE-JIC
- Designed in accordance EN12999-EN13001
- Fatigue test classification: S2

## TECHNICAL SPECIFICATIONS

		HB330R E2	HB330R E3	HB330R E4
Lifting moment	<b>tm</b>	31,8	-	-
Max. vertical reach	<b>m</b> (hyd. - man.)	11,6 - 17,5	13,5 - 19,4	15,4 - 21,4
Slewing angle	°	380	380	380
Slewing time	<b>s/180°</b>	20	20	20
Max. working heel	°	4	4	4
Working pressure	<b>bar</b>	290	290	290
Oil tank capacity	<b>l</b>	160	160	160
Max. oil flow	<b>l/min.</b>	50	50	50
Standard crane weight (without stabilizers)	<b>kg</b>	3145	3370	3580
Weight stabilizers	<b>kg</b>	560	560	560
PBT minimum	<b>t</b>	19	19	19

E = Number of hydraulic extensions - E3 = three extensions

**110 countries**  
**+3,500 employees**  
**20,000 customers**  
**+30 subsidiaries**  
**12 production facilities**



**Hyva is a leading provider of innovative and highly efficient transport solutions for commercial vehicles used in transport, construction, mining, materials handling and environmental service industries.**

**Founded in 1979 in the Netherlands, the company has a global presence with more than 30 wholly owned subsidiaries, extraordinary service coverage and 12 manufacturing facilities in Brazil, China, Europe and India.**

For more information on Hyva, please visit [www.hyva.com](http://www.hyva.com)

or follow us on:



**Hyva Holding B.V.**  
Antonie van Leeuwenhoekweg 37  
2408 AK Alphen aan den Rijn  
The Netherlands  
Telephone: +31 (0)172 - 42 35 55  
Telefax: +31 (0)172 - 42 08 80  
info@hyva.com  
www.hyva.com



Quality and  
environmental certified

DEALER STAMP