

# HYVA<sup>®</sup> CRANE HB 170



| MODELS     | LIFTING MOMENT | MAX VERTICAL REACH | SLEWING ANGLE | SLEWING TIME | MAX WORKING HEEL | WORKING PRESSURE | CRANE WEIGHT WITHOUT STABILIZERS | WEIGHT OF STABILIZERS | OIL TANK CAPACITY | OIL FLOW | DIMENSIONS     |
|------------|----------------|--------------------|---------------|--------------|------------------|------------------|----------------------------------|-----------------------|-------------------|----------|----------------|
|            | tm             | m                  | °             | s/180°       | °                | bar              | kg                               | kg                    | l                 | l/min    | mm B x h x S   |
| HB170 E1   | 15,8           | HYD. 9,9<br>MAN. - | 387           | 17           | 4                | 310              | 1770                             | 360                   | 130               | 32       | 2480x2295x970  |
| HB170 E2   | -              | 11,8 -             | 387           | 17           | 4                | 310              | 1910                             | 360                   | 130               | 32       | 2480x2295x970  |
| HB170 E3   | -              | 13,8 19,8          | 387           | 17           | 4                | 310              | 2030                             | 360                   | 130               | 32       | 2480x2295x1000 |
| HB170 E4   | -              | 15,7 22,0          | 387           | 17           | 4                | 310              | 2150                             | 360                   | 130               | 32       | 2480x2295x1000 |
| HB170 E5   | -              | 17,8 22,0          | 387           | 17           | 4                | 310              | 2260                             | 360                   | 130               | 32       | 2480x2295x1000 |
| HB170 E6   | -              | 19,8 22,0          | 387           | 17           | 4                | 310              | 2340                             | 360                   | 130               | 32       | 2495x2295x1000 |
| HB170 E4J2 | -              | 21,1 22,8          | 387           | 17           | 4                | 310              | 2460                             | 360                   | 130               | 32       | 2480x2295x1120 |

## ACCESSORIES

Cross controls  
Supplementary elements activations (1)  
Winch  
Manual extensions  
Automatic pivoting stabilizer legs  
Manual pivoting stabilizer legs  
Oil cooler  
Top seat  
Operator Full Protection (CE)

## ZUBEHOERE

Kreuzen Schalstangen  
Zusätzliche Steuerelemente (1)  
Seilwinde  
Mechanische Ausleger  
Automatisch gelenkige Abstützbeine  
Manuell gelenkige Abstützbeine  
Ölkühler  
Hoch Führersitz  
Operator Full Protection (CE)

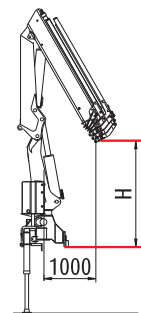
(1) No E4 J2

## ACCESSOIRES

Commandes croisées  
Activation éléments supplémentaires (1)  
Treuil  
Rallonges mécaniques  
Béquilles pivotantes automatiques  
Béquilles pivotantes manuelles  
Refroidisseur huile  
Poste de manoeuvre en haut  
Operator Full Protection (CE)

## ACCESORIOS

Comandos cruzados  
Ativação de elementos suplementares (1)  
Guincho de cabo  
Extensões mecânicas  
Estabilizadores articulados automáticos  
Estabilizadores articulados manuais  
Radiador para refrigeração de óleo  
Posto de manobra no cimo  
Operator Full Protection (CE)



HB 170 E1 = 2300  
HB 170 E2 = 2250  
HB 170 E3 = 2200  
HB 170 E4 = 2200  
HB 170 E5 = 2130  
HB 170 E6 = 2070



Hyva Holding B.V.  
Antonie van Leeuwenhoekweg 37  
2408 AK Alphen aan den Rijn  
The Netherlands  
Telephone: +31 (0)172 - 42 35 55  
Telefax: +31 (0)172 - 42 08 80  
info@hyva.com  
www.hyva.com  
www.hyvacrane.com



## DEALER

Data, descriptions and illustrations pertain only and uniquely to models sold at the time of printing of this brochure. After the date of printing, this information is purely indicative and not binding upon HYVA. Future modifications are solely at the discretion of HYVA and are always in compliance with applicable and pertinent safety standards. To obtain updated data, descriptions and illustrations, contact the manufacturer or your reseller. Cranes manufactured and/or marketed by HYVA - Les données, les descriptions et les illustrations se rapportent seulement et exclusivement aux modèles commercialisés à la date d'impression de ce dépliant. Après la date d'impression, ces informations sont simplement indicatives et n'engagent pas HYVA. D'éventuelles modifications sont à la discrétion d'HYVA et toujours dans l'observance des normes de sécurité pertinentes et applicables. Pour obtenir les données, les descriptions et les illustrations actualisées, s'adresser au fabricant ou au revendeur. Grues produites et/ou vendues par HYVA - Daten, Beschreibungen und Abbildungen beziehen sich ausschließlich auf die zum Zeitpunkt des Drucks dieser Broschüre vertriebenen Modelle. Nach diesem Datum verstehen sich diese Informationen als rein richtungweisend und sind in keinem Fall für HYVA verbindlich. HYVA behält sich vor, nach eigenem Ermessen und in jedem Fall unter Berücksichtigung der zugehörigen und geltenden Sicherheitsvorschriften Änderungen vorzunehmen. Bitte wenden Sie sich für aktuelle Daten, Beschreibungen und Abbildungen an den Hersteller oder Händler. Die Krane werden von HYVA hergestellt und/oder vermarktet. - Os dados, descrições e ilustrações referem-se única e exclusivamente aos modelos comercializados à data da impressão deste folheto. Após a data da impressão, estas informações são meramente indicativas pelas quais a HYVA não se responsabiliza. Eventuais alterações ficam ao critério da HYVA e estão sempre em conformidade com as normas de segurança pertinentes e aplicáveis. Para obter dados, descrições e ilustrações actualizadas, contacte o fabricante ou revendedor. Guindaste produzidos e/ou comercializados pela HYVA.

# TRUCK-MOUNTED CRANES HB 170



# HYVA<sup>®</sup> CRANE HB 170



- Load limiting device
- Hexagonal section extensions
- Independent extension cylinders
- Outriggers with hydraulic extension
- Flanged valves
- Assembly kit
- Designed in accordance with: EN12999-DIN15018
- Fatigue test classification: B3
- Oil tank
- Fittings SAE-JIC
- Sliding pads on telescopic extensions
- Fixed stabilizer cylinders
- Mechanical rotation limitation (CE)
- Dual controls (Not with radio remote control)



- Limiteur de moment
- Extensions à section hexagonale
- Vérins hydrauliques à sortie indépendante
- Béquilles avec ouverture hydraulique
- Vannes bridées
- Kit de brides de fixation
- Projet en accords aux normes : EN12999-DIN15018
- Essai de fatigue avec classification: B3
- Réservoir huile
- Tujauterie SAE-JIC
- Patins de coulissement sûr les éléments télescopiques
- Vérins stabilisateurs fixes
- Limitation mécanique de la rotation (CE)
- Commandes bilatérales (Non avec radiocommande)



- Momentbegrenzer
- Sechskantige Ausschübe
- Unabhängige Schubzylinder
- Hydraulisch ausfahrbare Abstützungen
- Ventile mit Flansch
- Befestigungsteile
- Berechnungsnorm nach EN12999-DIN15018
- Ermüdungstest in Klasse: B3
- Ölbehälter
- Anschlüsse SAE-JIC
- Gleitschuhe auf den Ausschüben
- Feste Abstützungen
- Mechanischer Schwenkbegrenzer (CE)
- Beidseitige Kransteuerungen (Nicht mit Funkfernsteuerung)

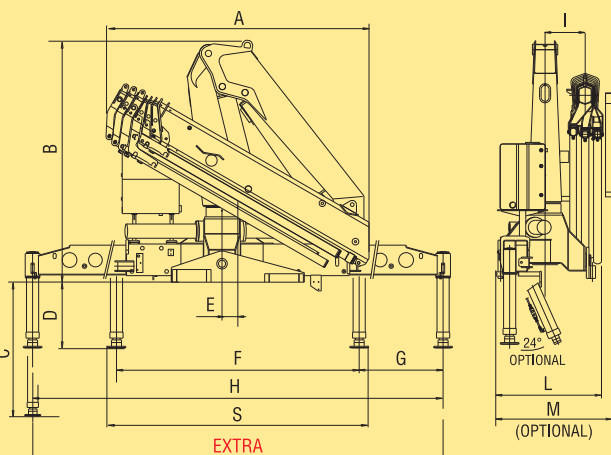


- Válvula limitadora de momento de carga
- Extensões sextavadas
- Cilindros de extensão independentes
- Estabilizadores estendidos hidráulicamente
- Válvulas flangeadas
- Kit de montagem
- Norma do projeto: EN12999-DIN 15018
- Tipo de ensaio de fadiga: B3
- Reservatório de óleo
- Conexões SAE-JIC
- Calços deslizantes em extensões telescópicas
- Estabilizadores fixos
- Limitador mecânico de giro (CE)
- Comandos bilaterais (não com comando por rádio)



| Model      | Capacity (kg)                                      | Height (m)   |
|------------|--|--|
| HB170 E1   | 15760* 7470** 3700 2560                            | 1,00 2,10 4,26 6,13                                    |
| HB170 E2   | 15340* 7215** 3600 2445 1850                       | 1,00 2,10 4,26 6,13 8,00                               |
| HB170 E3   | 15040* 7040** 3530 2355 1750 1380 1045 795 600     | 1,00 2,10 4,26 6,13 8,00 9,95 11,90 14,00 16,10        |
| HB170 E4   | 14680* 6900** 3445 2255 1640 1270 1045 795 600 460 | 1,00 2,10 4,26 6,13 8,00 9,95 11,90 14,00 16,10 18,30  |
| HB170 E5   | 14360* 6740** 3300 2130 1525 1170 940 795 600 460  | 1,00 2,10 4,26 6,22 8,10 10,05 12,00 14,00 16,10 18,30 |
| HB170 E6   | 14010* 6580** 3170 2030 1435 1070 850 700 600 460  | 1,00 2,10 4,42 6,30 8,16 10,10 12,10 14,10 16,10 18,30 |
| HB170 E4J2 |  | 535 480 435 360<br>14,80 16,00 17,50 19,10             |

\*) Theoretical lifting capacity  
\*\*) Fixed hook capacity



| HB170 | E1   | E2   | E3   | E4   | E5   | E6   | E4 - J2 |
|-------|------|------|------|------|------|------|---------|
| A     | 2165 | 2210 | 2275 | 2370 | 2440 | 2495 | 2420    |
| B     | 2295 | 2295 | 2295 | 2295 | 2295 | 2295 | 2295    |
| C     | 1244 | 1244 | 1244 | 1244 | 1244 | 1244 | 1244    |
| D     | 624  | 624  | 624  | 624  | 624  | 624  | 624     |
| E     | 150  | 150  | 150  | 150  | 150  | 150  | 150     |
| F     | 2300 | 2300 | 2300 | 2300 | 2300 | 2300 | 2300    |
| G     | 1600 | 1600 | 1600 | 1600 | 1600 | 1600 | 1600    |
| H     | 5500 | 5500 | 5500 | 5500 | 5500 | 5500 | 5500    |
| I     | 380  | 380  | 380  | 380  | 380  | 380  | 380     |
| L     | 970  | 970  | 1000 | 1000 | 1000 | 1000 | 1120    |
| M     | 1120 | 1120 | 1120 | 1120 | 1120 | 1120 | -       |
| S     | 2480 | 2480 | 2480 | 2480 | 2480 | 2480 | 2480    |
| EXTRA | 6240 | 6240 | 6240 | 6240 | 6240 | 6240 | 6240    |

## EES Extra Extension Speed

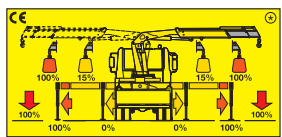
A special regenerative valve re-uses oil during extension, ensuring an incredibly high speed without compromising the safe operation of the crane.

## SDS Smooth Descent System

This system compensates for boom oscillation, ensuring smooth movement of the load.

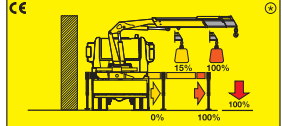
## Stability control systems (CE)

### HXL System



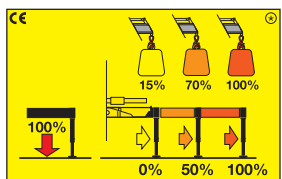
The TCU checks the positions of the stabilizers beams, monitoring for two possible positions: beam fully open, beam not fully open. Depending on the position of the beams and the stabilizers, the crane's lifting capacity changes according to the setting made by the installer. This allows the operator to use the crane even with a beam partially or fully retracted without having stability problems.

### Optional HRCS



The Rotation Control Sensor constantly checks the slewing position of the crane and limits the lifting capacity depending on the beams' and the stabilizers' positions.

### H2XL System



The TCU checks the positions of the stabilizers and divides the working area into 4 slewing sectors: over the cabin, right side, left side and the rear of the vehicle. Depending on the position of the beams and the stabilizers, the crane's lifting capacity changes according to the settings made by the installer. This allows the operator to use the crane even with a beam partially or fully retracted without having stability problems.

HPES The HPES (Proportional Encoder Sensor) recognizes 3 positions of the stabilizers' beams: fully open, half extended, fully closed.

HRCS The HRCS (Rotation Control Sensor) recognizes 4 slewing sectors: over the cabin, right side, left side, to the rear of the vehicle.

The CAN-BUS radio-control allows the operator to know the positions of the stabilizers and the loading conditions of the crane.

With manual opening stabilizers, the H2XL System only recognizes completely open or completely closed beam positions.



⊗ The percentages present in the pictures are merely examples and they have no bearing on the crane's real lifting capacities. The crane's real lifting capacities will depend on truck's stability.

## HB 170 X

CAN-BUS



Only CE Version

Pressure compensated control valve: SAUER DANFOSS PVG32

- Multifunction remote control
- Protected against radio interference
- Move around the truck freely

Truck-mounted cranes