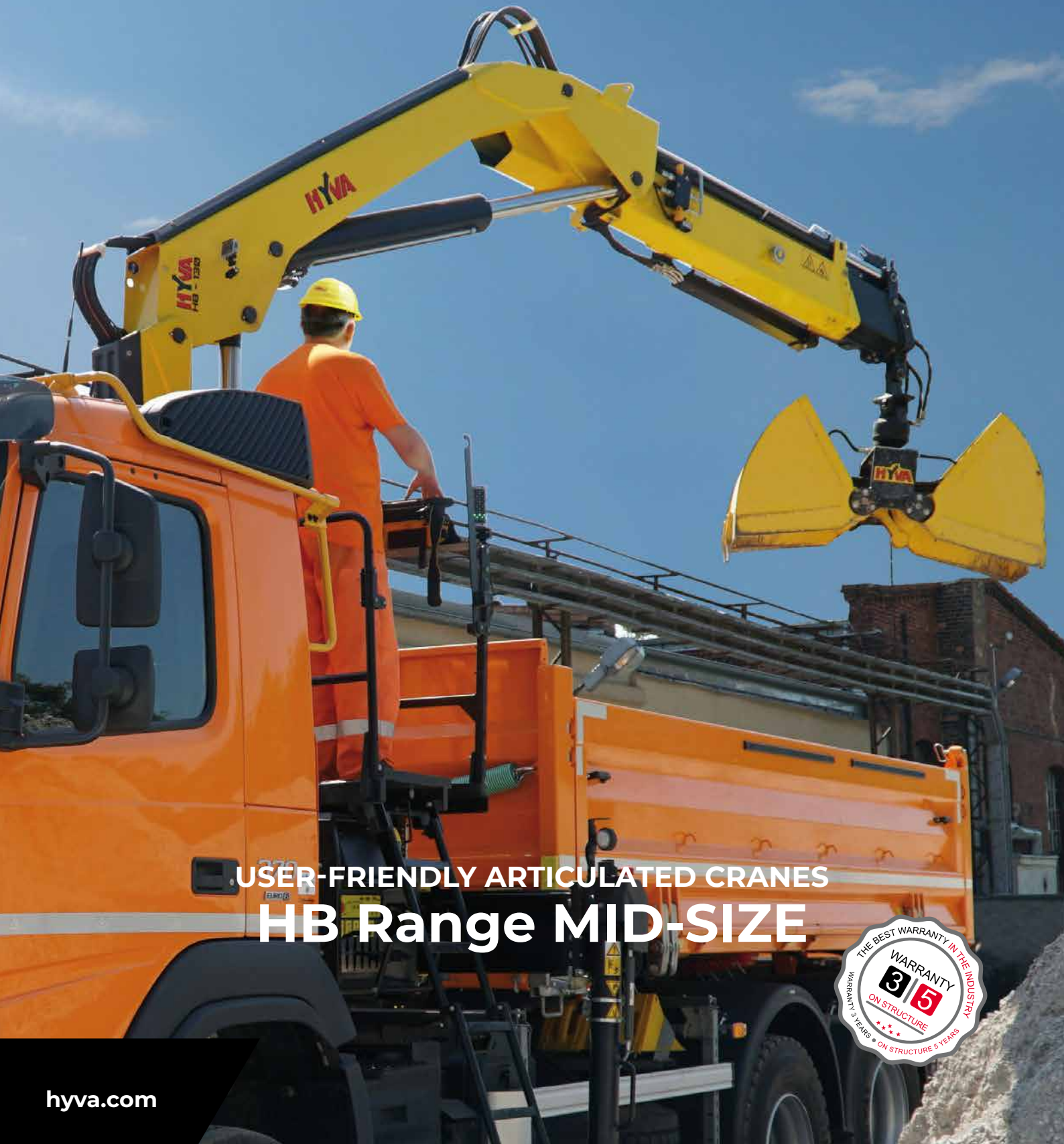


EDGE LINE
RAISE YOUR GAME



**USER-FRIENDLY ARTICULATED CRANES
HB Range MID-SIZE**



RAISE YOUR GAME HYVA PERFORMANCE



TOP SOLUTIONS

1 TPP



- **Top protection painting** - Top quality treatment and paint on all crane components for higher value retention and durability by the use of cataphoresis painting process.
- Bolts and nuts protected by Geomet® treatment: 890% more resistance against corrosion.

Top quality protection for harsh environment

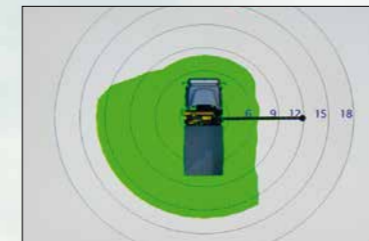
2 EES



- **Extra Extension Speed** - The market is always demanding more speed, but also the highest possible safety. EES is our answer to this, through the use of a specially designed counterbalance valve: this system increases the extension speed without affecting the crane safety.

Save time, precise work, increase efficiency

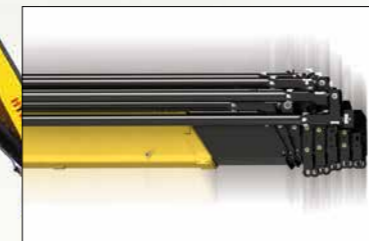
3 DLD



- **Dynamic Load Diagram** - After the stabilization, operator can select the load to be lifted. Display shows the permitted crane outreach based on the stability and the load selected.

Crane lifting capacity always under control in all stabilizer positions

4 SDS



- **Smooth Descent System** - uses a special counterbalance valve to reduce boom oscillation. The result for the user is an incredible precision in unloading operations.

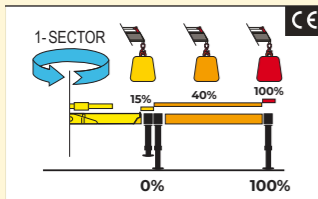
Control and precision of the movement



CRANE CONTROL SYSTEM



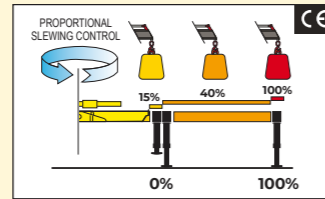
A-CLASS



- N.2 step stabilizer beams
- N.1 sector on slewing
- Mono-area pressure limit



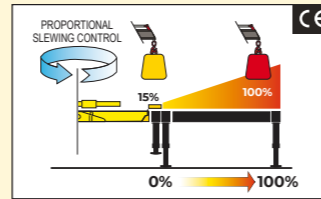
E-CLASS



- N.2 step stabilizer beams
- Proportional slewing control
- Truck side independent



P-CLASS

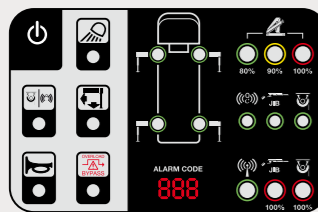


- Proportional stabilizers control
- Proportional slewing control
- Truck side independent

HUMAN MACHINE INTERFACE



BRIGHT LED PANEL



Available for the entire range till 28Tm. Highly user-friendly design, with buttons and LED lights. Dedicated led lights to identify the position of each stabilizer. New 3-digits display has been added to inform the operator about alarms and errors.



INTELLIGENT DISPLAY 4.3"



Up to 6 languages available. Full color new display. Offers more information and data compared to the LED Panel. The graphic design and intuitive menu guide the operator and service technician to all the functionality information, statistics and performances.



SMART TOP MONITOR 7"



Up to 16 languages available into the software. Top choice available for the range. Data statistics and crane management, all included into a 7" TFT monitor giving to the operator a higher level of awareness of the crane.

CRANE CONTROLS



MANUAL CONTROL



Crane with manual sequential controls have levers mounted on both sides of the crane. At each control station, the orientation of the controls can be the same up to down or left to right.



LCD REMOTE CONTROL



Each transmitter is equipped with 8 ergonomic proportional levers (6 for Scanreco mini) to control up to 8 functions of the crane. Using two hands, the operator can move 2-3-4 functions at once. This ensures more speed in loading or unloading operations with high precision.



GRAPHIC REMOTE CONTROL



Top visualization on 3" graphic display on the remote transmitter. Improved crane data visualization and crane control. Top level class of offer in the range.

SMART AND USER-FRIENDLY CONTROLS

Control station distinguished by operator comfort and user-friendly interface derived from dedicated ergonomic and user preference studies

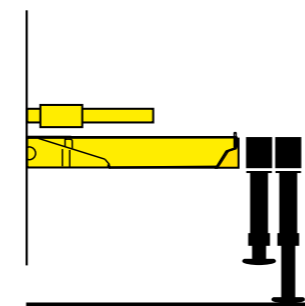


SMART TOP MONITOR 7"
Simple and quick access to all the functions and information

Vertical stabilizers levers
Safe and fast. Excellent supervision of stabilizing operation

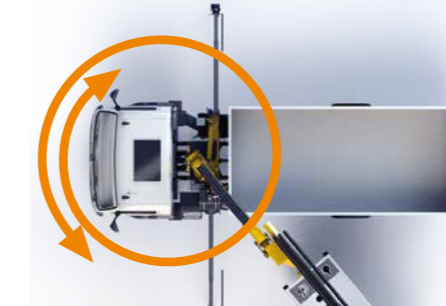
TECHNICAL SOLUTIONS TO RAISE RELIABILITY AND SAFETY

New Stability Logic for maximum level of flexibility



- Be free to maximize the use of your crane for all stabilizers' positions.

425° Slewing Angle for quick loading and unloading operation



- The widest slewing angle for medium sized cranes.
- Top efficiency and easy to use.

Electronics mind: guaranteed in all conditions



- All electrical components have IP69K enclosures which offer complete protection against water jet and dust penetration providing higher durability and less down time.

OUR INNOVATIONS ARE CHANGING THE GAME

Solutions that are the result of smart engineering



DLD DYNAMIC LOAD DIAGRAM

This system, a first on truck-mounted articulated cranes, optimises stabilisation and makes crane operation safer and more efficient, allows the driver to verify in advance the crane lifting capacity based on the truck stability.

A display shows the outreach available for the load selected and the actual boom slewing position.

A TEAM OF SKILLED AND CARING SPECIALISTS

Easy installation and smart calibration cranes combined with high level of service, makes Hyva the best partner for your business, all over the world



ONE CRANE, MANY APPLICATIONS

Thanks to the extensive range of accessories and attachments



Building



Construction



Energy



Environment



Gardening



Logistics



Maintenance



Mining



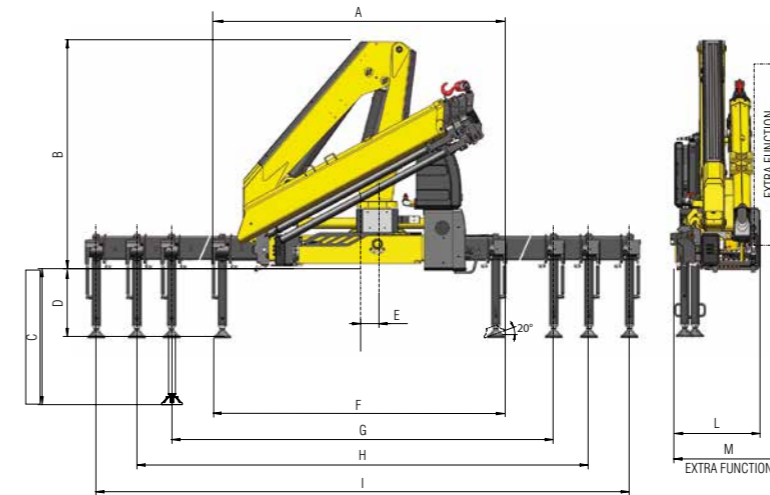
Oil&Gas



Rental

TECHNICAL INFORMATION HB90 - HB112

Dimensions (mm)



	E1		E2		E3		E4	
	90	112	90	112	90	112	90	112
A	2305	2310	2305	2310	2305	2310	2305	2310
B	2070	2095	2070	2095	2070	2095	2070	2095
C	1185	1327	1185	1327	1185	1327	1185	1327
D	585	635	585	635	585	635	585	635
E	160		160		160		160	
F	2270	2303	2270	2303	2270	2303	2270	2303
G	3290	3300	3290	3300	3290	3300	3290	3300
H	4790	4805	4790	4805	4790	4805	4790	4805
I	5755	5765	5755	5765	5755	5765	5755	5765
L	800		800		800		800	
M	850		850		850		850	

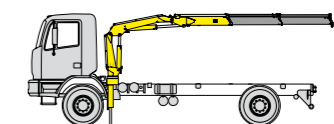
Load diagrams

Diagram	kg	m	HB90				HB112			
E1	2130	4,08	1510	5,76						
E2	2020	4,08	1415	5,76	1095	7,45	710	9,41	600	11,21
E3	1920	4,17	1320	5,85	990	7,54	790	9,34	600	11,21
E4	1850	4,24	1230	5,92	920	7,61	710	9,41	600	11,21

Standard features

Designed in accordance with EN12999:2020 + EN13849
Design class: HC1-HD4

- Cross controls
- Flanged valves
- Oil tank
- Manually extendable stabilizers
- Fixed stabilizer cylinders
- Swivel stabilizer foot
- Centralized greasing system
- EES Extra Extension Speed
- SDS Smooth Descent System
- A Class - Crane Control System (CE)
- LED panel - Human Machine Interface (CE)



Recommended truck:
HB90
M.T.T. ton 8 - G.V.W. ton 8
HB112
M.T.T. ton 10 - G.V.W. ton 10

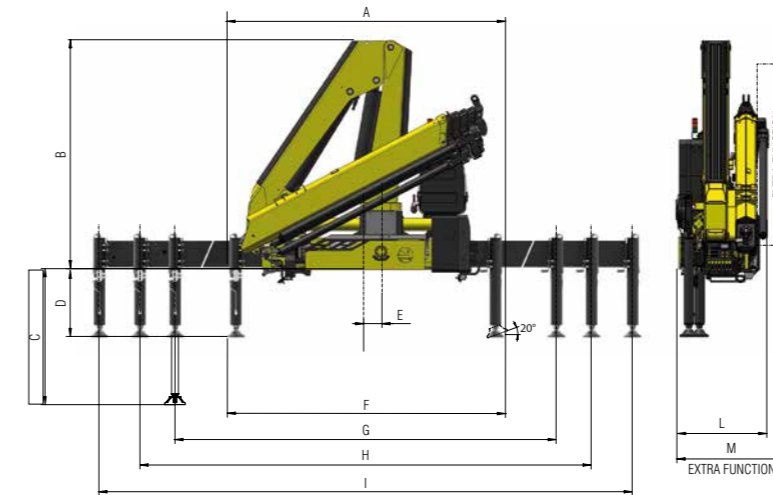
Technical specifications

HB type		E1		E2		E3		E4	
		90	112	90	112	90	112	90	112
Lifting Moment	tm	8,7	10,5	8,2	10,1	8,0	9,5	7,8	9,3
Slewing Angle	°	425		425		425		425	
Working pressure	bar	310	300	310	300	310	300	310	300
Oil tank capacity	l	75		75		75		75	
Max Oil flow	l/min	40		40		40		40	
Max lifting height	m	9,1	9,3	10,7	10,9	12,6		14,4	14,6
Standard crane weight	kg	1140	1215	1220	1320	1300	1420	1370	1510



TECHNICAL INFORMATION HB130 - HB160

Dimensions (mm)



	E1		E2		E3		E4		E5	
	130	160	130	160	130	160	130	160	130	160
A	2480	2490	2480	2490	2480	2490	2480	2490	2480	2490
B	2295		2295		2295		2295		2295	
C	1374	1355	1374	1355	1374	1355	1374	1355	1374	1355
D	627	618	627	618	627	618	627	618	627	618
E	160		160		160		160		160	
F	2445	2470	2445	2470	2445	2470	2445	2470	2445	2470
G	4200	4225	4200	4225	4200	4225	4200	4225	4200	4225
H	5400	5425	5400	5425	5400	5425	5400	5425	5400	5425
I	6600	6625	6600	6625	6600	6625	6600	6625	6600	6625
L	825		825		825		825		895	
M	930	940	930	940	930	940	930	940	975	985

Load diagrams

E1	HB130		HB160	
	kg	m	kg	m
	2740	1940	3490	2475
	4,54	6,34	4,54	6,34

E2	HB130						HB160					
	kg	m	kg	m	kg	m	kg	m	kg	m	kg	m
	2610	1810	1395	1010	755	560	3310	2305	1775	1305	980	740
	4,54	6,34	8,14	10,36	12,34	14,39	4,54	6,34	8,14	10,36	12,34	14,39

E3	HB130							HB160						
	kg	m	kg	m	kg	m	kg	m	kg	m	kg	m		
	2475	1690	1280	1015	755	560	410	3150	2170	1645	1305	980	740	
	4,62	6,42	8,22	10,2	12,34	14,39	16,49	4,62	6,42	8,22	10,2	12,34	14,39	

E4	HB130							HB160						
	kg	m	kg	m	kg	m	kg	m	kg	m	kg	m		
	2355	1585	1175	910	755	560	410	3005	2040	1520	1185	980	740	
	4,71	6,51	8,31	10,29	12,27	14,39	16,49	4,71	6,51	8,31	10,29	12,27	14,39	

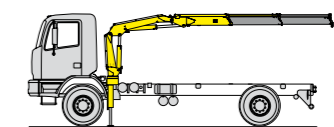
E5	HB130							HB160						
	kg	m	kg	m	kg	m	kg	m	kg	m	kg	m		
	2245	1490	1085	825	665	560	410	2875	1925	1410	1080	875	740	
	4,78	6,58	8,38	10,36	12,34	14,39	16,49	4,78	6,58	8,38	10,36	12,34	14,39	

Standard features

Designed in accordance with
EN12999:2020 + EN13849

Design class: HC1-HD4

- Cross controls
- Load limit device
- Flanged valves
- Oil tank
- Manually extendable stabilizers
- Internal stabilizers pipes
- Fixed stabilizer cylinders
- Swivel stabilizer foot
- Centralized greasing system
- EES Extra Extension Speed
- SDS Smooth Descent System
- A Class - Crane Control System (CE)
- LED panel - Human Machine Interface (CE)



Recommended truck:
HB130
M.T.T. ton 12 - G.V.W. ton 12
HB160
M.T.T. ton 15 - G.V.W. ton 15

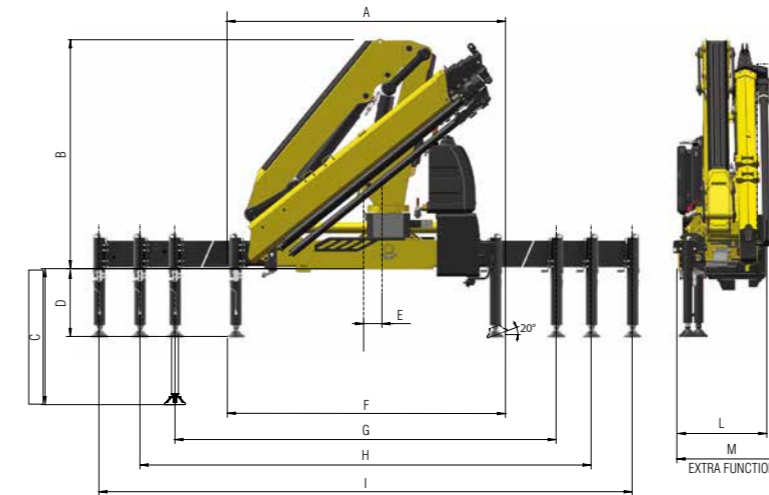
Technical specification

		E1		E2		E3		E4		E5	
		130	160	130	160	130	160	130	160	130	160
HB type											
Lifting Moment	tm	12,4	15,8	11,8	15,0	11,4	14,6	11,1	14,2	10,7	13,7
Slewing Angle	°	425		425		425		425		425	
Working pressure	bar	285	280	285	280	285	280	285	280	285	280
Oil tank capacity	l	130		130		130		130		130	
Max Oil flow	l/min	60		60		60		60		60	
Max lifting height	m	10,1		11,7		13,7		15,7		17,8	
Standard crane weight	kg	1545	1775	1665	1910	1780	2025	1870	2130	1955	2220



TECHNICAL INFORMATION HB210 - HB240

Dimensions (mm)



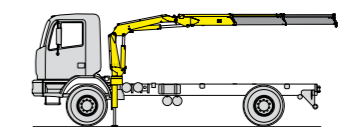
	E2	E3	E4	E5
A	2500	2500	2500	2500
B	2300	2300	2300	2300
C	1348	1348	1348	1348
D	611	611	611	611
E	150	150	150	150
F	2520	2520	2520	2520
G	4860	4860	4860	4860
H	5500	5500	5500	5500
I	7420	7420	7420	7420
L	930	930	930	930
M	1050	1050	1050	1050

Load diagrams

Model	kg	3000	2280					HB210	
E2	4405	3000	2280					HB210	
	m	4,30	6,20	8,10					
Model	kg	3610	2750					HB240	
E2	5280	3610	2750					HB240	
	m	4,30	6,20	8,10					
Model	kg	2970	2230	1700	1280	980	770	HB210	
E3	4320	2970	2230	1700	1280	980	770	HB210	
	m	4,30	6,20	8,10	10,13	12,25	14,46	16,59	
Model	kg	3425	2570	2035	1530	1170	770	HB240	
E3	5085	3425	2570	2035	1530	1170	770	HB240	
	m	4,30	6,20	8,10	10,13	12,25	14,46	16,59	
Model	kg	2830	2120	1625	1280	980	770	630	HB210
E4	4100	2830	2120	1625	1280	980	770	630	HB210
	m	4,39	6,29	8,19	10,22	12,25	14,46	16,59	18,70
Model	kg	3215	2380	1880	1530	1170	915	735	HB240
E4	4820	3215	2380	1880	1530	1170	915	735	HB240
	m	4,39	6,29	8,19	10,22	12,25	14,46	16,59	18,70
Model	kg	2585	1880	1440	1165	980	770	630	HB210
E5	3940	2585	1880	1440	1165	980	770	630	HB210
	m	4,47	6,37	8,27	10,30	12,33	14,46	16,59	18,70
Model	kg	3033	2220	1710	1390	1170	915	735	HB240
E5	4585	3033	2220	1710	1390	1170	915	735	HB240
	m	4,47	6,37	8,27	10,30	12,33	14,46	16,59	18,70

Standard features

- Designed in accordance with**
EN12999:2020 + EN13849
Design class: HC1-HD4
- Cross controls
 - Load limit device
 - Flanged valves
 - Oil tank
 - Manually extendable stabilizers
 - Internal stabilizers pipes
 - Fixed stabilizer cylinders
 - Swivel stabilizer foot
 - Centralized greasing system
 - EES Extra Extension Speed
 - SDS Smooth Descent System
 - A Class - Crane Control System (CE)
 - LED panel - Human Machine Interface (CE)



Recommended truck:
HB210
 M.T.T. ton 17 - G.V.W. ton 17
HB240
 M.T.T. ton 19 - G.V.W. ton 19

Technical specifications

		E2		E3		E4		E5	
		210	240	210	240	210	240	210	240
HB type		210	240	210	240	210	240	210	240
Lifting Moment	tm	18,9	22,7	18,6	21,8	18,0	21,1	17,6	20,4
Slewing Angle	°	415		415		415		415	
Working pressure	bar	315	320	315	320	315	320	315	320
Oil tank capacity	l	130		130		130		130	
Max Oil flow	l/min	80		80		80		80	
Max lifting height	m	11,9		13,9		16,0		18,2	
Standard crane weight	kg	2305	2375	2455	2530	2600	2680	2715	2800

110 countries
+3,500 employees
20,000 customers
+30 subsidiaries
14 production facilities



Hyva is a leading provider of innovative and highly efficient transport solutions for commercial vehicles used in transport, construction, mining, materials handling and environmental service industries.

Founded in 1979 in the Netherlands, the company has a global presence with more than 30 wholly owned subsidiaries, extraordinary service coverage and 14 manufacturing facilities in Brazil, China, Europe and India.

For more information on Hyva, please visit www.hyva.com

or follow us on:



Hyva Holding B.V.
Antonie van Leeuwenhoekweg 37
2408 AK Alphen aan den Rijn
The Netherlands
Telephone: +31 (0)172 - 42 35 55
info@hyva.com
www.hyva.com



Quality and
environmental certified

DEALER STAMP