

**HA SERIES, THE PERFECT SOLUTION  
FOR APPLICATIONS WITH LIGHT VEHICLES**



**TELESCOPIC CRANE – COMPACT, LIGHT AND EASY TO USE**

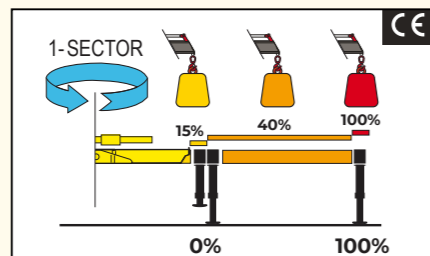
**HA 50**


**ACCESSORIES**

- Load limiting device (No CE)
- Supplementary elements activations
- Mechanical rotation limitation (No CE)
- Winch
- Manual extensions
- Turning stabilizers
- Top seat
- Operator Full Protection
- Manually extra extensible stabilizers
- Hydraulic extra extensible stabilizers
- Extra cross beams
- "Green" Oil\*

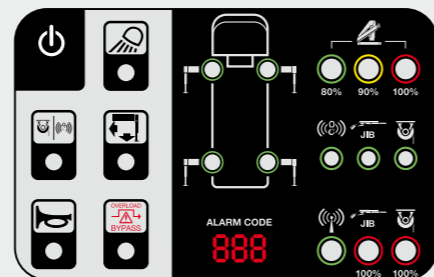
\*) Eco-friendly


**CRANE CONTROL SYSTEM**

**A-CLASS**


- N.2 step stabilizer beams
- N.1 sector on slewing
- Mono-area pressure limit

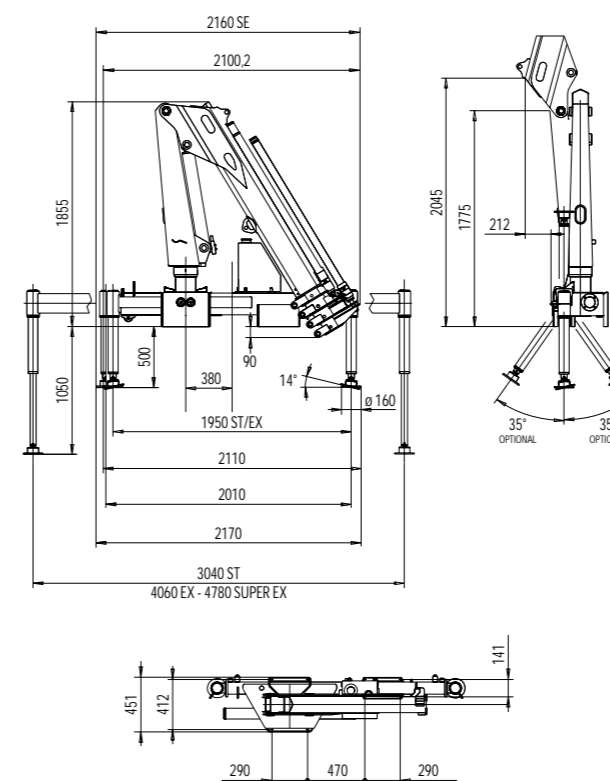
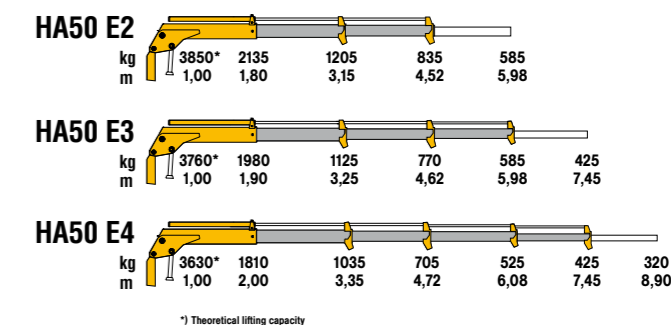
**HUMAN MACHINE INTERFACE**

**BRIGHT LED PANEL**


**Available for the entire range till 28Tm.**  
 Highly user-friendly design, with buttons and LED lights. Dedicated led lights to identify the position of each stabilizer. New 3-digits display has been added to inform the operator about alarms and errors.

**HA 50 X**


- Compact dimensions and reduced weight
- Proportional speed control of any single movement
- Stabilizer control by radio

**TECHNICAL INFORMATION HA 50**
**DIMENSIONS (MM)**

**LOAD DIAGRAMS**

**STANDARD FEATURES**

- Designed in accordance with:**  
**EN12999:2020 + EN13849**  
**Design class: HC1-HD4**
- Load limiting device (CE)
  - Hexagonal section extensions
  - Independent extension cylinders
  - Flanged valve
  - Assembly kit
  - Oil tank
  - Fittings SAE-JIC
  - Sliding pads on telescopic extensions
  - Self-lubricating bushings
  - Fixed stabilizer cylinders
  - Light indicator for correct stabilizer stowing (CE)
  - Mechanical rotation limitation (CE) (No with HRCS)
  - Dual controls (No with radio remote control)
  - Swivel stabilizer foot
  - Proportional pressure transducer on main cylinder (CE)

**TECHNICAL SPECIFICATIONS**

|   |               | HA 50 E2 | HA 50 E3 | HA 50 E4 |
|---|---------------|----------|----------|----------|
| Lifting moment                              | <b>tm</b>     | 3,85     | 3,76     | 3,63     |
| Max. vertical reach                         | <b>m</b>      | 7,30     | 8,80     | 10,20    |
| Slewing angle                               | <b>°</b>      | 380      | 380      | 380      |
| Slewing time                                | <b>s/180°</b> | 15       | 15       | 15       |
| Max. working heel                           | <b>°</b>      | 4        | 4        | 4        |
| Working pressure                            | <b>bar</b>    | 220      | 220      | 220      |
| Oil tank capacity                           | <b>l</b>      | 35       | 35       | 35       |
| Max. oil flow                               | <b>l/m</b>    | 16       | 16       | 16       |
| Standard crane weight (without stabilizers) | <b>kg</b>     | 605      | 650      | 690      |

**110 countries**  
**+3,500 employees**  
**20,000 customers**  
**+30 subsidiaries**  
**14 production facilities**



**Hyva is a leading provider of innovative and highly efficient transport solutions for commercial vehicles used in transport, construction, mining, materials handling and environmental service industries.**

**Founded in 1979 in the Netherlands, the company has a global presence with more than 30 wholly owned subsidiaries, extraordinary service coverage and 14 manufacturing facilities in Brazil, China, Europe and India.**

For more information on Hyva, please visit [www.hyva.com](http://www.hyva.com)

or follow us on:



**Hyva Holding B.V.**  
Antonie van Leeuwenhoekweg 37  
2408 AK Alphen aan den Rijn  
The Netherlands  
Telephone: +31 (0)172 - 42 35 55  
info@hyva.com  
www.hyva.com



**Quality and  
environmental certified**

**DEALER STAMP**