

**CORE**LINE  
CRANES THAT MATTER



**EASY-TO-USE ARTICULATED CRANES  
FOR MATERIAL HANDLING**

**HB102 - HB152 - HB202 - HB232  
MID-SIZE**



# CRANES THAT MATTER HYVA **RELIABILITY**



## TECHNICAL SOLUTIONS TO **MODERN DESIGN AND SUPERIOR COMFORT**

### User friendly control station



- Low and horizontal position of ergonomic levers for comfortable crane control.
- Control valve HC-D4.
- Improved comfort while operating, intuitive use.

### High comfort and always stable



- **Separate valve for stabilizers**
- Two sets of levers, one per each side of the crane.
- Higher comfort and productivity.

### Modern look and feel



- High volume steel oil tank made with high spec painting finitures and integrated temperature gauge.

### Easy solution for Load Limit Device



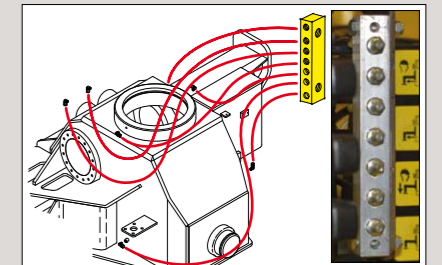
- Hydraulic load limit device equipped on both manual and radio controlled cranes. (Standard on HB152 - HB202)

### Strong structure



- The use of **hexagonal extensions** brings superior performance, precision and reduced maintenance.

### Keep in mind the maintenance



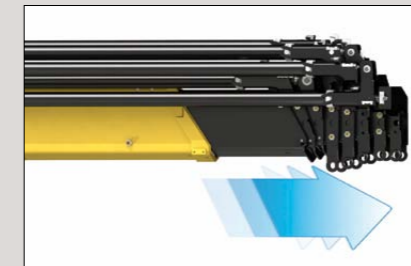
- Regular maintenance is a very important step in prolonging the life of the crane. **Centralized greasing** makes this easier to accomplish.

### Wide range of accessories



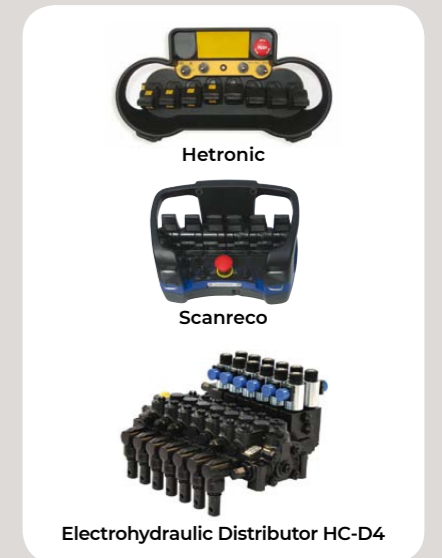
- Winch
- Additional extra functions for attachments
- Oil cooler
- Working lights
- Audible/visual warning device
- Hour meter

### EES Extra Extension Speed



- The market is always demanding more speed, but also the highest possible safety. EES is our answer to this, through the use of a specially designed counterbalance valve: this system increases the extension speed without affecting the crane safety. Save time, precise work, increase efficiency.

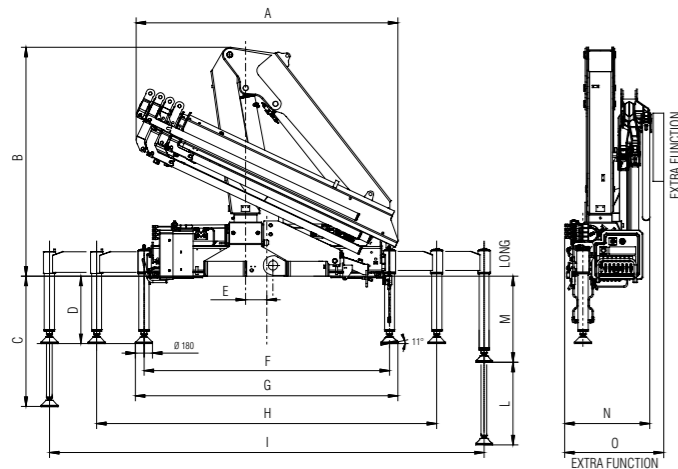
### Wide range Radio selection (Optional)





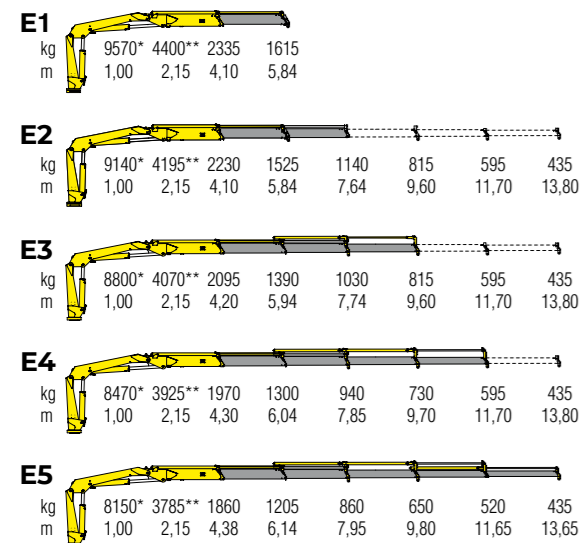
# TECHNICAL INFORMATION HB102

## Dimensions (mm)



	E1	E2	E3	E4	E5
A	2475	2475	2475	2475	2475
B	2160	2160	2160	2160	2160
C	1236	1236	1236	1236	1236
D	636	636	636	636	636
E	200	200	200	200	200
F	2320	2320	2320	2320	2320
G	2480	2480	2480	2480	2480
H	3620	3620	3620	3620	3620
I	4920	4920	4920	4920	4920
L	780	780	780	780	780
M	816	816	816	816	816
N	740	740	740	740	820
O	830	830	830	830	-

## Load diagrams



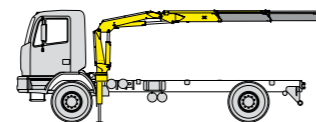
\*) Theoretical lifting capacity  
 \*\*) Fixed hook capacity

## Standard features

Designed in accordance with EN12999

Design class: HC1-HD4

- Cross controls
- Control valve HC-D4
- Flanged valves
- Centralized greasing system
- Hexagonal section extensions
- Independent extension cylinders
- Stabilizers hose slides supports
- Manually extendable stabilizers
- Fixed stabilizer cylinders
- Swivel stabilizer foot
- Oil tank
- EES Extra Extension Speed



Recommended truck:  
**HB102**  
 M.T.T. ton 10 - G.V.W. ton 10

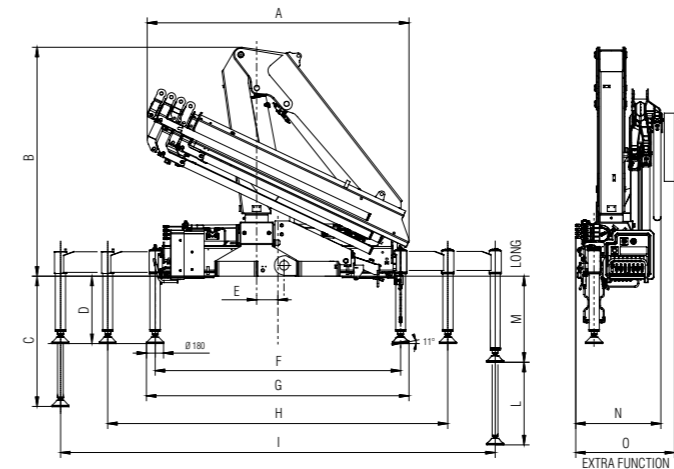
## Technical specifications - EN12999 - HC1-HD4

		E1	E2	E3	E4	E5
Lifting Moment	<b>tm</b>	9,6	9,1	8,8	8,5	8,1
Slewing Angle	°	395	395	395	395	395
Working pressure	<b>bar</b>	290	290	290	290	290
Oil tank capacity	<b>l</b>	60	60	60	60	60
Max Oil flow	<b>l/min</b>	40	40	40	40	40
Max lifting height	<b>m</b>	9,45	11,30	13,20	15,30	17,30
Standard crane weight	<b>kg</b>	1080	1185	1280	1370	1440

FOR NON CE MARKETS ONLY

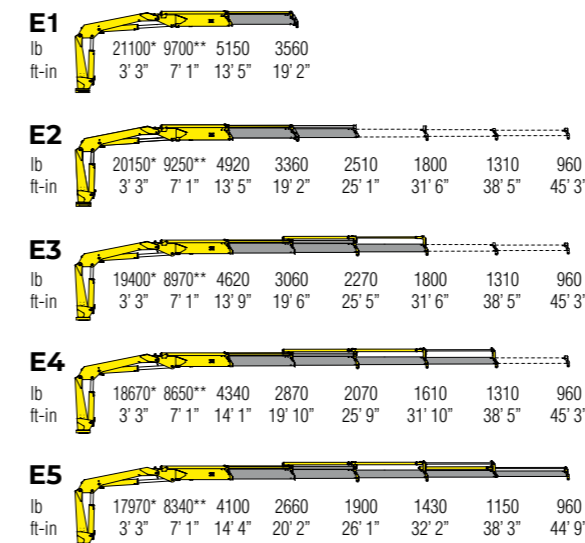
# TECHNICAL INFORMATION HB102

## Dimensions (in)

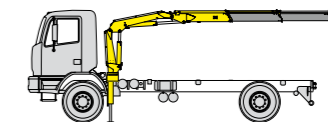


	E1	E2	E3	E4	E5
A	98	98	98	98	98
B	85	85	85	85	85
C	49	49	49	49	49
D	25	25	25	25	25
E	8	8	8	8	8
F	92	92	92	92	92
G	98	98	98	98	98
H	143	143	143	143	143
I	194	194	194	194	194
L	31	31	31	31	31
M	33	33	33	33	33
N	30	30	30	30	33
O	33	33	33	33	-

## Load diagrams



\*) Theoretical lifting capacity  
 \*\*) Fixed hook capacity



Recommended truck:  
**HB102**  
 G.V.W. lb 22050

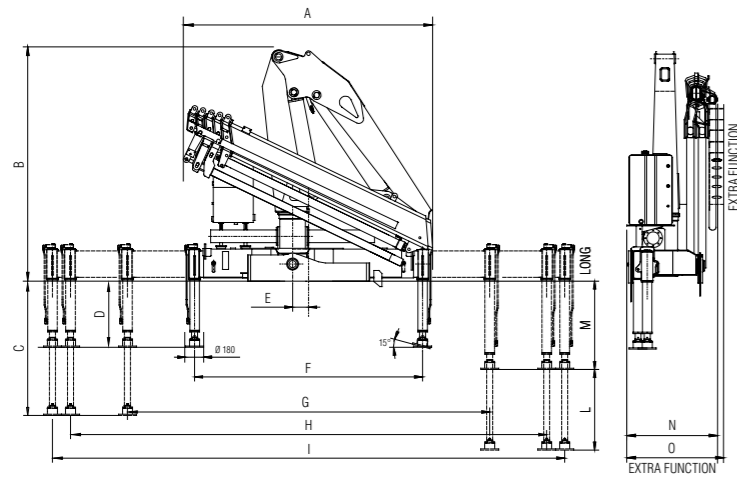
## Technical specifications - EN12999 - HC1-HD4

		E1	E2	E3	E4	E5
Lifting Moment	<b>ln-ft</b>	69400	65800	63600	61500	58600
Slewing Angle	°	395	395	395	395	395
Working pressure	<b>psi</b>	4200	4200	4200	4200	4200
Oil tank capacity	<b>gal</b>	15,9	15,9	15,9	15,9	15,9
Max Oil flow	<b>gal/min</b>	10,6	10,6	10,6	10,6	10,6
Max lifting height	<b>ft-in</b>	31' 0"	37' 1"	43' 4"	50' 2"	56' 9"
Standard crane weight	<b>lb</b>	2380	2610	2820	3020	3170

FOR NON CE MARKETS ONLY

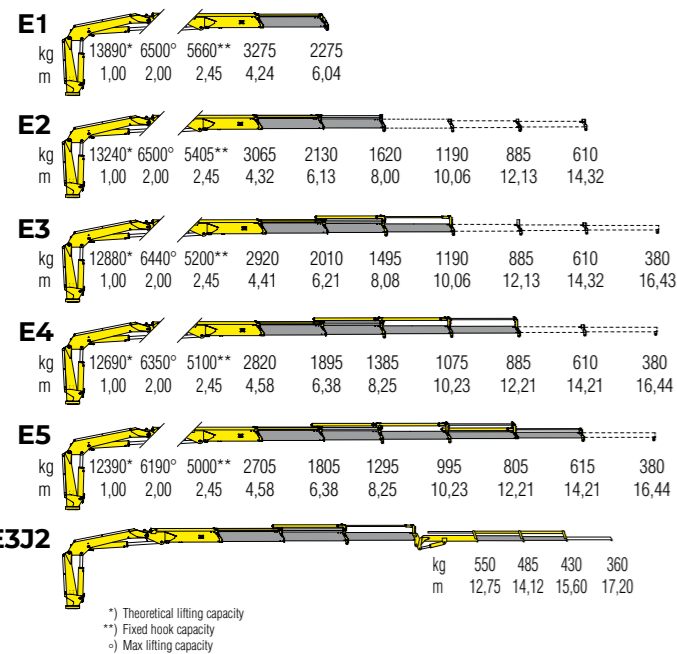
# TECHNICAL INFORMATION HB152

## Dimensions (mm)



	E1	E2	E3	E4	E5	E3J2
A	2155	2455	2470	2485	2500	2490
B	2340	2340	2340	2340	2340	2340
C	1340	1340	1340	1340	1340	1340
D	660	660	660	660	660	660
E	160	160	160	160	160	160
F	2280	2280	2280	2280	2280	2280
G	4000	4000	4000	4000	4000	4000
H	5140	5140	5140	5140	5140	5140
I	5500	5500	5500	5500	5500	5500
L	804	804	804	804	904	804
M	883	883	883	883	883	883
N	855	855	855	855	910	855
O	1000	1000	1000	1000	-	1000

## Load diagrams

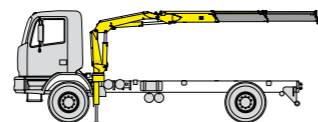


## Standard features

Designed in accordance with EN12999

Design class: HC1-HD4

- Cross controls
- Control valve HC-D4
- Flanged valves
- Load limit device
- Centralized greasing system
- Hexagonal section extensions
- Independent extension cylinders
- Sliding pads on telescopic extensions
- Stabilizers hose slides supports
- Manually extendable stabilizers
- Fixed stabilizer cylinders
- Swivel stabilizer foot
- Oil tank
- EES Extra Extension Speed



Recommended truck:  
**HB152**  
 M.T.T. ton 12 - G.V.W. ton 12

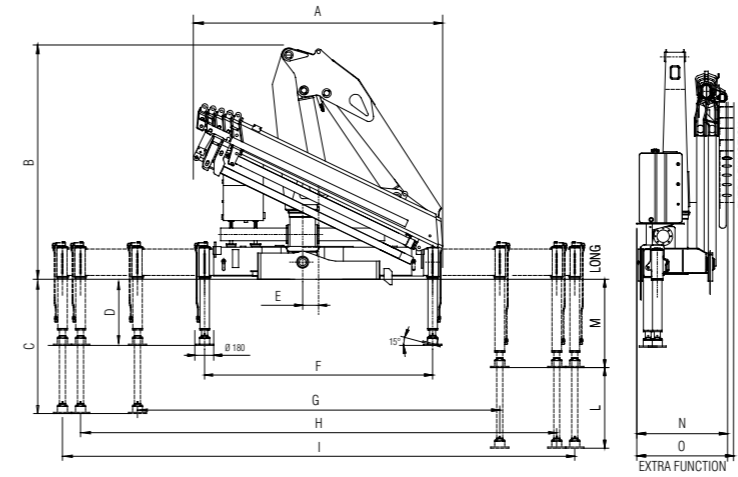
## Technical specifications - EN12999 - HC1-HD4

		E1	E2	E3	E4	E5	E3J2
Lifting Moment	<b>tm</b>	13,9	13,2	12,9	12,7	12,4	7,00
Slewing Angle	°	380	380	380	380	380	380
Working pressure	<b>bar</b>	285	285	285	285	285	260
Oil tank capacity	<b>l</b>	130	130	130	130	130	130
Max Oil flow	<b>l/min</b>	25	25	25	25	25	25
Max lifting height	<b>m</b>	9,6	11,5	13,5	15,5	17,5	18,8
Standard crane weight	<b>kg</b>	1510	1640	1760	1860	1950	2070

FOR NON CE MARKETS ONLY

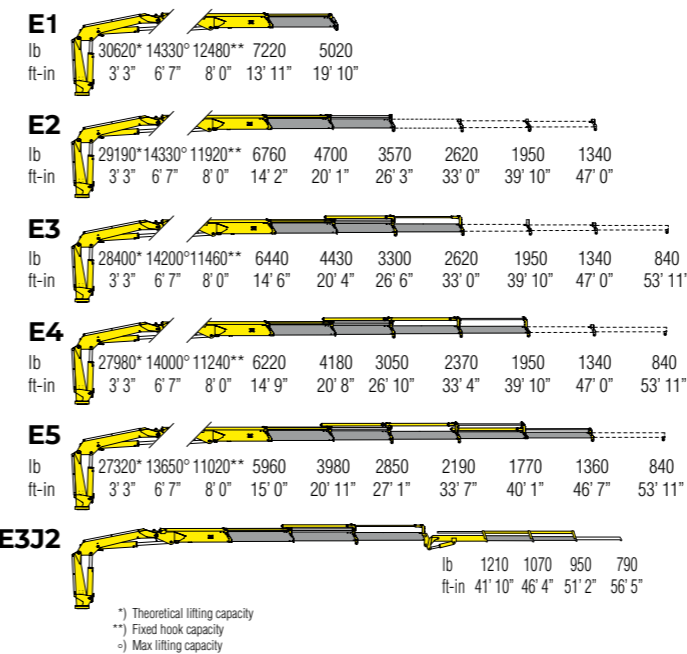
# TECHNICAL INFORMATION HB152

## Dimensions (in)



	E1	E2	E3	E4	E5	E3J2
A	85	97	98	98	99	98
B	93	93	93	93	93	93
C	53	53	53	53	53	53
D	26	26	26	26	26	26
E	7	7	7	7	7	7
F	90	90	90	90	90	90
G	158	158	158	158	158	158
H	203	203	203	203	203	203
I	217	217	217	217	217	217
L	32	32	32	32	36	32
M	35	35	35	35	35	35
N	34	34	34	34	36	34
O	40	40	40	40	-	40

## Load diagrams

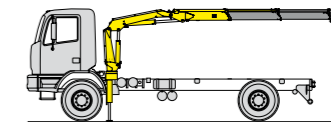


## Standard features

Designed in accordance with EN12999

Design class: HC1-HD4

- Cross controls
- Control valve HC-D4
- Flanged valves
- Load limit device
- Centralized greasing system
- Hexagonal section extensions
- Independent extension cylinders
- Sliding pads on telescopic extensions
- Stabilizers hose slides supports
- Manually extendable stabilizers
- Fixed stabilizer cylinders
- Swivel stabilizer foot
- Oil tank
- EES Extra Extension Speed



Recommended truck:  
**HB152**  
 G.V.W. lb 26460

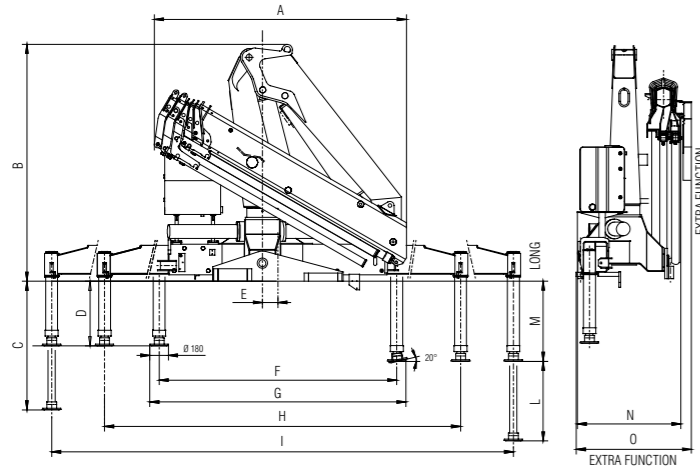
## Technical specifications - EN12999 - HC1-HD4

		E1	E2	E3	E4	E5	E3J2
Lifting Moment	<b>lb-ft</b>	100540	95470	92580	90410	88960	51140
Slewing Angle	°	380	380	380	380	380	380
Working pressure	<b>psi</b>	4130	4130	4130	4130	4130	3770
Oil tank capacity	<b>gal</b>	34,3	34,3	34,3	34,3	34,3	34,3
Max Oil flow	<b>gal/min</b>	6,6	6,6	6,6	6,6	6,6	6,6
Max lifting height	<b>ft-in</b>	31' 6"	37' 9"	44' 3"	50' 10"	57' 5"	61' 8"
Standard crane weight	<b>lb</b>	3330	3620	3880	4100	4300	4560

FOR NON CE MARKETS ONLY

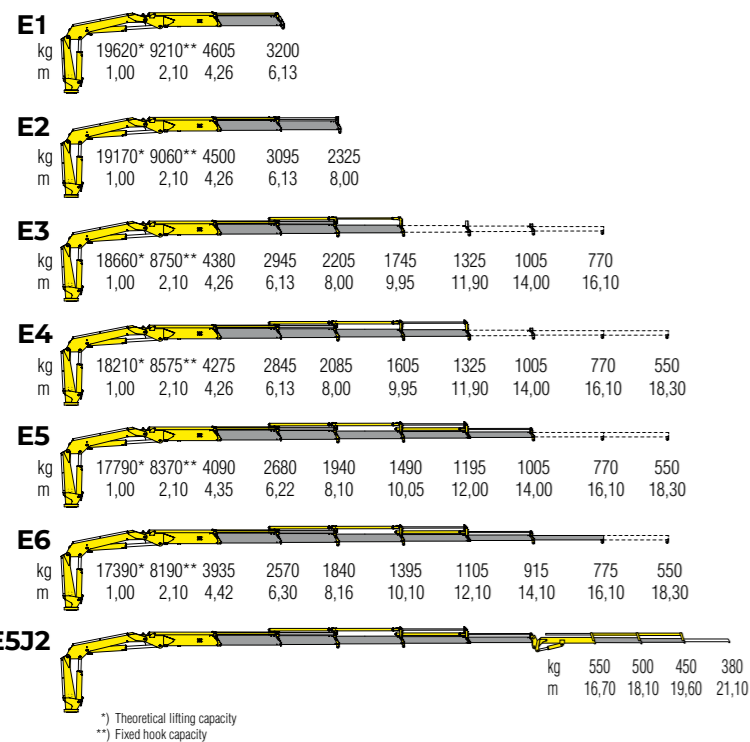
# TECHNICAL INFORMATION HB202

## Dimensions (mm)



	E1	E2	E3	E4	E5	E6	E5J2
A	2165	2210	2275	2370	2440	2495	2480
B	2295	2295	2295	2295	2295	2295	2300
C	1244	1244	1244	1244	1244	1244	1244
D	624	624	624	624	624	624	624
E	150	150	150	150	150	150	150
F	2300	2300	2300	2300	2300	2300	2300
G	2480	2480	2480	2480	2480	2480	2480
H	5500	5500	5500	5500	5500	5500	5500
I	6240	6240	6240	6240	6240	6240	6240
L	770	770	770	770	770	770	770
M	783	783	783	783	783	783	783
N	970	970	1000	1000	1000	1000	1000
O	1120	1120	1120	1120	1120	1120	1120

## Load diagrams

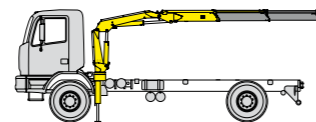


## Standard features

Designed in accordance with EN12999

Design class: HC1-HD4

- Cross controls
- Control valve HC-D4
- Flanged valves
- Load limit device
- Centralized greasing system
- Hexagonal section extensions
- Independent extension cylinders
- Sliding pads on telescopic extensions
- Stabilizers hose slides supports
- Manually extendable stabilizers
- Fixed stabilizer cylinders
- Swivel stabilizer foot
- Oil tank
- EES Extra Extension Speed
- SDS Smooth Descent System



Recommended truck:  
**HB202**  
M.T.T. ton 19 - G.V.W. ton 19

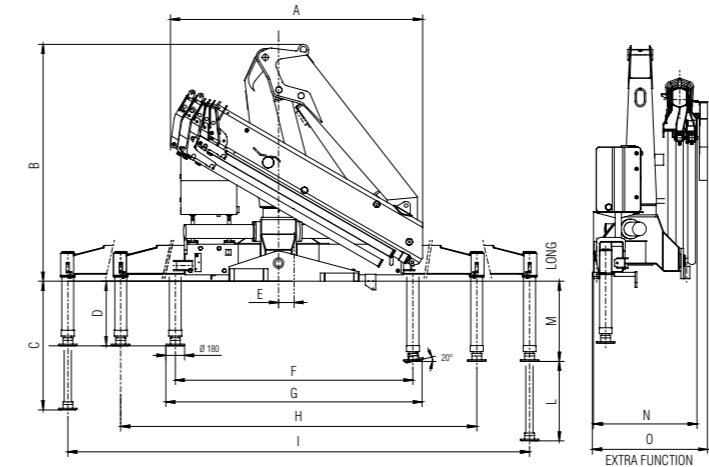
## Technical specifications - EN12999 - HC1- HD4

		E1	E2	E3	E4	E5	E6	E5J2
Lifting Moment	<b>tm</b>	19,3	19,0	18,4	18,0	17,6	17,2	9,2
Slewing Angle	°	387	387	387	387	387	387	387
Working pressure	<b>bar</b>	300	300	300	300	300	300	300
Oil tank capacity	<b>l</b>	130	130	130	130	130	130	130
Max Oil flow	<b>l/min</b>	40	40	40	40	40	40	40
Max lifting height	<b>m</b>	9,9	11,8	13,7	15,7	17,7	19,8	23,3
Standard crane weight	<b>kg</b>	1860	2010	2150	2280	2380	2480	2715

FOR NON CE MARKETS ONLY

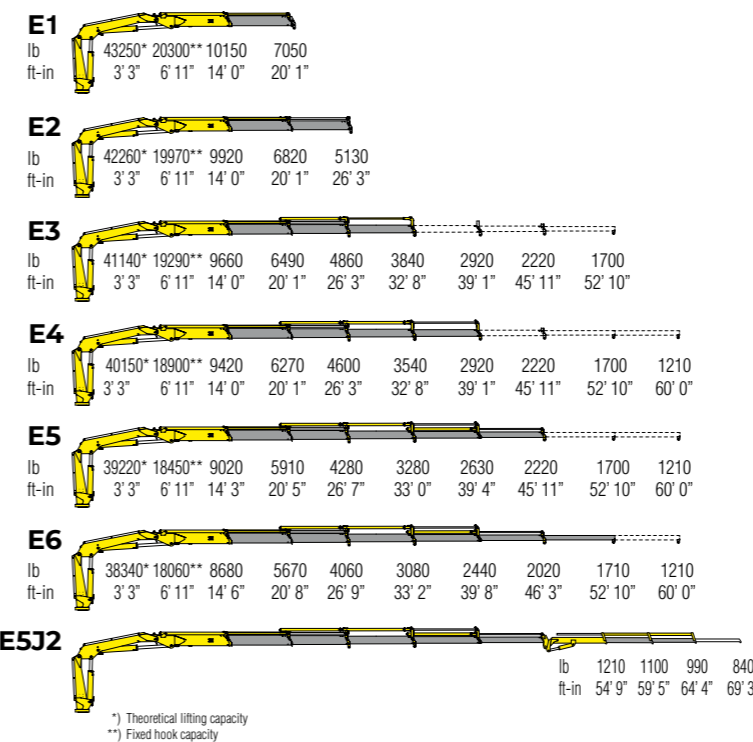
# TECHNICAL INFORMATION HB202

## Dimensions (in)



	E1	E2	E3	E4	E5	E6	E5J2
A	86	87	90	94	97	99	98
B	91	91	91	91	91	91	91
C	50	50	50	50	50	50	50
D	25	25	25	25	25	25	25
E	6	6	6	6	6	6	6
F	91	91	91	91	91	91	91
G	98	98	98	98	98	98	98
H	217	217	217	217	217	217	217
I	246	246	246	246	246	246	246
L	31	31	31	31	31	31	31
M	31	31	31	31	31	31	31
N	39	39	40	40	40	40	40
O	45	45	45	45	45	45	45

## Load diagrams

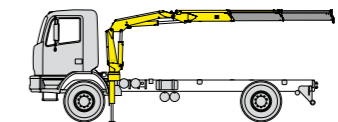


## Standard features

Designed in accordance with EN12999

Design class: HC1-HD4

- Cross controls
- Control valve HC-D4
- Flanged valves
- Load limit device
- Centralized greasing system
- Hexagonal section extensions
- Independent extension cylinders
- Sliding pads on telescopic extensions
- Stabilizers hose slides supports
- Manually extendable stabilizers
- Fixed stabilizer cylinders
- Swivel stabilizer foot
- Oil tank
- EES Extra Extension Speed
- SDS Smooth Descent System



Recommended truck:  
**HB202**  
G.V.W. lb 41895

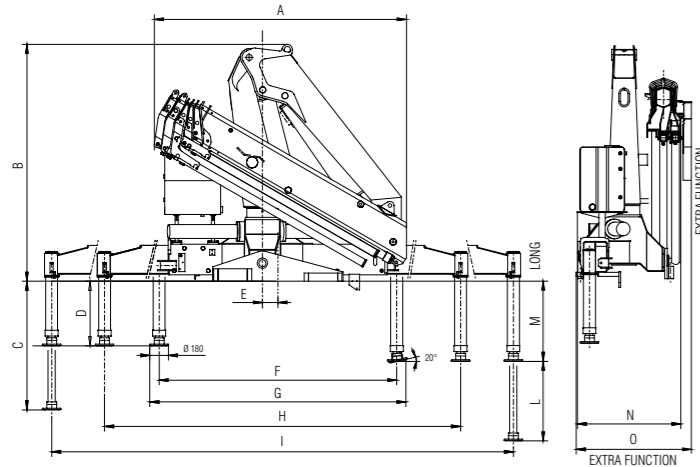
## Technical specifications - EN12999 - HC1- HD4

		E1	E2	E3	E4	E5	E6	E5J2
Lifting Moment	<b>lb-ft</b>	139600	137430	133090	130190	127300	124410	66540
Slewing Angle	°	387	387	387	387	387	387	387
Working pressure	<b>psi</b>	4350	4350	4350	4350	4350	4350	4350
Oil tank capacity	<b>gal</b>	34,4	34,4	34,4	34,4	34,4	34,4	34,4
Max Oil flow	<b>gal/min</b>	10,6	10,6	10,6	10,6	10,6	10,6	10,6
Max lifting height	<b>ft in</b>	32' 6"	38' 9"	44' 11"	51' 6"	58' 1"	65' 0"	76' 5"
Standard crane weight	<b>lb</b>	4100	4430	4740	5030	5250	5470	5990

FOR NON CE MARKETS ONLY

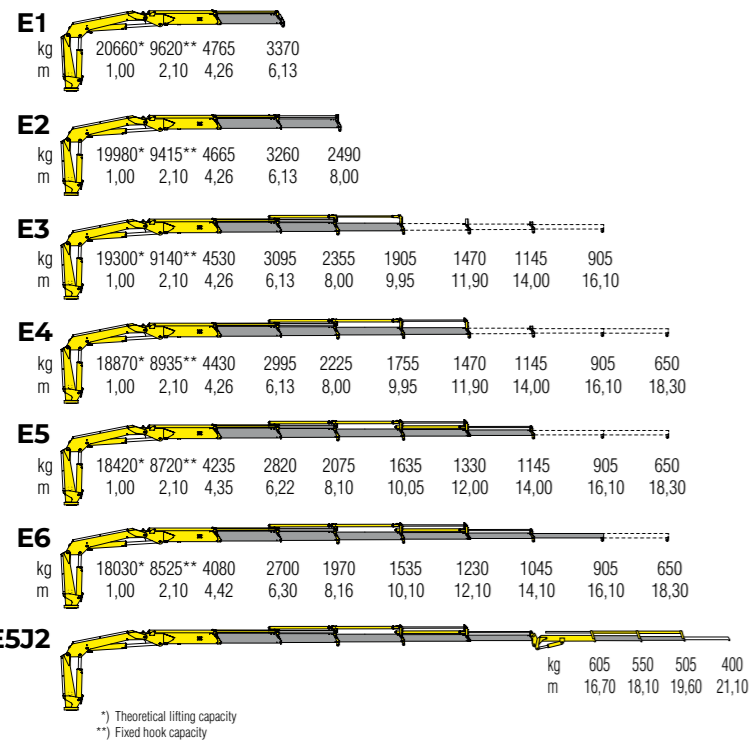
# TECHNICAL INFORMATION HB232

## Dimensions (mm)



	E1	E2	E3	E4	E5	E6	E5J2
A	2165	2210	2275	2370	2440	2495	2480
B	2295	2295	2295	2295	2295	2295	2300
C	1244	1244	1244	1244	1244	1244	1244
D	624	624	624	624	624	624	624
E	150	150	150	150	150	150	150
F	2300	2300	2300	2300	2300	2300	2300
G	2480	2480	2480	2480	2480	2480	2480
H	5500	5500	5500	5500	5500	5500	5500
I	6240	6240	6240	6240	6240	6240	6240
L	770	770	770	770	770	770	770
M	783	783	783	783	783	783	783
N	970	970	1000	1000	1000	1000	1000
O	1120	1120	1120	1120	1120	1120	1120

## Load diagrams

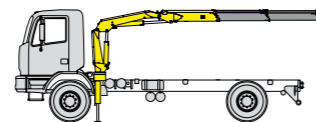


## Standard features

Designed in accordance with EN12999

Design class: HC1-HD4

- Cross controls
- Control valve HC-D4
- Flanged valves
- Load limit device
- Centralized greasing system
- Hexagonal section extensions
- Independent extension cylinders
- Sliding pads on telescopic extensions
- Stabilizers hose slides supports
- Manually extendable stabilizers
- Fixed stabilizer cylinders
- Swivel stabilizer foot
- Oil tank
- EES Extra Extension Speed
- SDS Smooth Descent System
- LCS Lifting Control System



Recommended truck:  
**HB232**  
M.T.T. ton 19 - G.V.W. ton 19

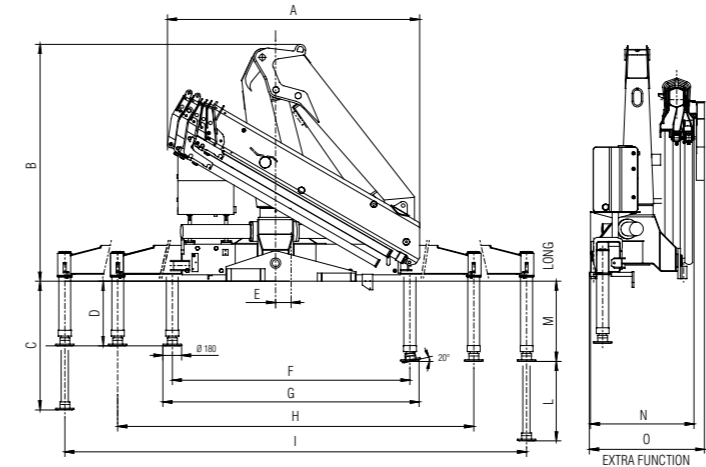
## Technical specifications - EN12999 - HC1- HD4

		E1	E2	E3	E4	E5	E6	E5J2
Lifting Moment	<b>tm</b>	20,7	19,9	19,2	18,8	18,3	17,9	10,1
Slewing Angle	°	387	387	387	387	387	387	387
Working pressure	<b>bar</b>	315	315	315	315	315	315	315
Oil tank capacity	<b>l</b>	130	130	130	130	130	130	130
Max Oil flow	<b>l/min</b>	40	40	40	40	40	40	40
Max lifting height	<b>m</b>	9,9	11,8	13,7	15,7	17,7	19,8	23,3
Standard crane weight	<b>kg</b>	1860	2010	2150	2280	2380	2480	2715

FOR NON CE MARKETS ONLY

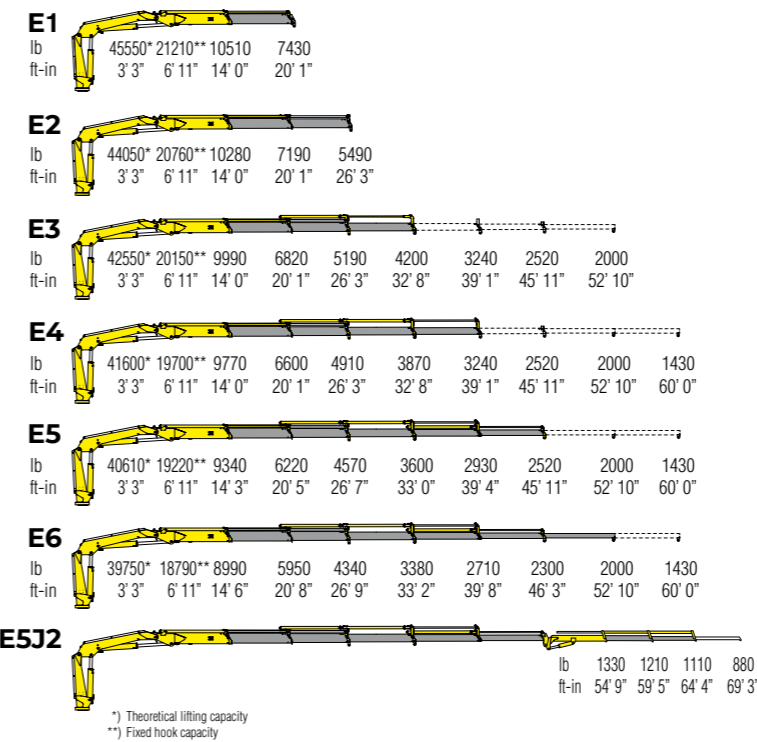
# TECHNICAL INFORMATION HB232

## Dimensions (in)



	E1	E2	E3	E4	E5	E6	E5J2
A	86	87	90	94	97	99	98
B	91	91	91	91	91	91	91
C	50	50	50	50	50	50	50
D	25	25	25	25	25	25	25
E	6	6	6	6	6	6	6
F	91	91	91	91	91	91	91
G	98	98	98	98	98	98	98
H	217	217	217	217	217	217	217
I	246	246	246	246	246	246	246
L	31	31	31	31	31	31	31
M	31	31	31	31	31	31	31
N	39	39	40	40	40	40	40
O	45	45	45	45	45	45	45

## Load diagrams

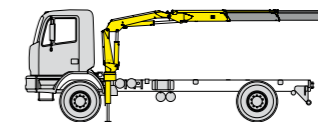


## Standard features

Designed in accordance with EN12999

Design class: HC1-HD4

- Cross controls
- Control valve HC-D4
- Flanged valves
- Load limit device
- Centralized greasing system
- Hexagonal section extensions
- Independent extension cylinders
- Sliding pads on telescopic extensions
- Stabilizers hose slides supports
- Manually extendable stabilizers
- Fixed stabilizer cylinders
- Swivel stabilizer foot
- Oil tank
- EES Extra Extension Speed
- SDS Smooth Descent System
- LCS Lifting Control System



Recommended truck:  
**HB232**  
G.V.W. lb 41895

## Technical specifications - EN12999 - HC1- HD4

		E1	E2	E3	E4	E5	E6	E5J2
Lifting Moment	<b>lb-ft</b>	149700	143900	138900	136000	132400	129500	73100
Slewing Angle	°	387	387	387	387	387	387	387
Working pressure	<b>psi</b>	4570	4570	4570	4570	4570	4570	4570
Oil tank capacity	<b>gal</b>	34,3	34,3	34,3	34,3	34,3	34,3	34,3
Max Oil flow	<b>gal/min</b>	10,6	10,6	10,6	10,6	10,6	10,6	10,6
Max lifting height	<b>ft in</b>	32' 6"	38' 9"	44' 11"	51' 6"	58' 1"	65' 0"	76' 5"
Standard crane weight	<b>lb</b>	4100	4430	4740	5025	5245	5465	5985

FOR NON CE MARKETS ONLY



**110 countries**  
**+3,500 employees**  
**20,000 customers**  
**+30 subsidiaries**  
**14 production facilities**



**Hyva is a leading provider of innovative and highly efficient transport solutions for commercial vehicles used in transport, construction, mining, materials handling and environmental service industries.**

**Founded in 1979 in the Netherlands, the company has a global presence with more than 30 wholly owned subsidiaries, extraordinary service coverage and 14 manufacturing facilities in Brazil, China, Europe and India.**

For more information on Hyva, please visit [www.hyva.com](http://www.hyva.com)

or follow us on:



**Hyva Holding B.V.**  
 Antonie van Leeuwenhoekweg 37  
 2408 AK Alphen aan den Rijn  
 The Netherlands  
 Telephone: +31 (0)172 - 42 35 55  
 Telefax: +31 (0)172 - 42 08 80  
 info@hyva.com  
 www.hyva.com



Quality and  
environmental certified

DEALER STAMP