

**EXTRA STRONG CASTING
FIFTH WHEEL COUPLING**



**BUSINESS UNIT
COMPONENTS**



EXTRA STRONG FIFTH WHEEL COUPLING

Hyva's Fifth Wheel Couplings are **more reliable** with a **high-strength** integrated robust casting top plate, **higher vertical load**, **stronger loading capacity** and **high safety performance**. With the **lightest weight** available in the market, the coupling helps reduce vehicle weight and increase load capacity. The Fifth Wheels family comprises two models, a standard version and a low maintenance grease free version.

PRODUCT FEATURES



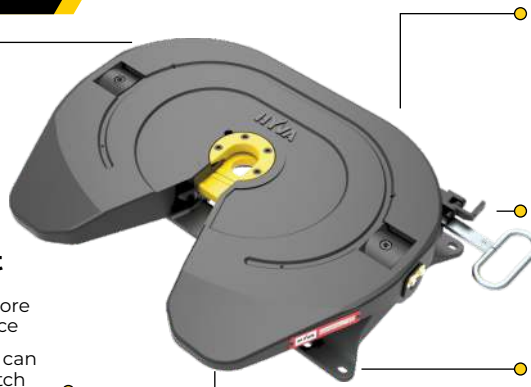
More Safe

High-strength integrated robust cast top plate
Stronger loading capacity and impact resistance
High safety performance



More Convenient

The external pivot bearing structure is simpler and more convenient for maintenance
Different heights pedestal can be freely combined to match flexibly for different application requirements.



More Durable

Integrated bearing structure
Reinforced steel cast pedestal
Reinforced wear ring
Higher durability



Approved according ECE R55-02 regulation



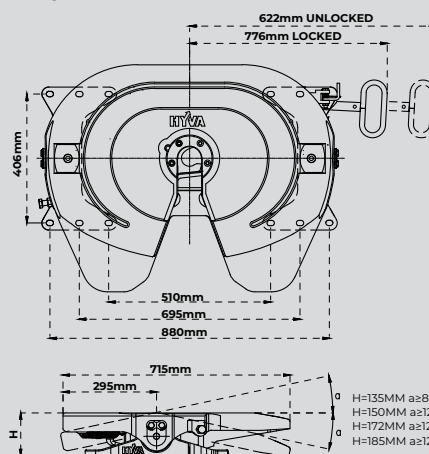
More Cost Efficient

The lightest weight available in the market
Vehicle weight reduction
Goods loading capacity increase

SPECIFICATIONS

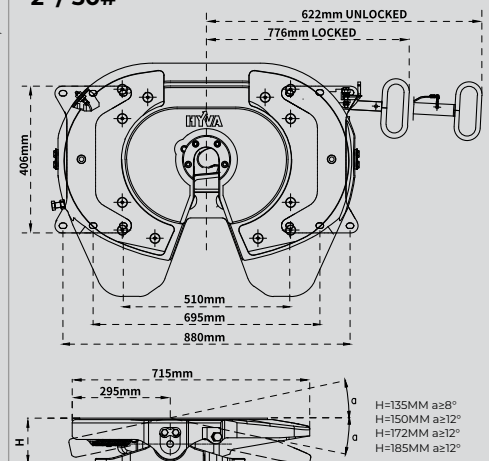
FW01-S

2" / 50#



FW01-M

2" / 50#

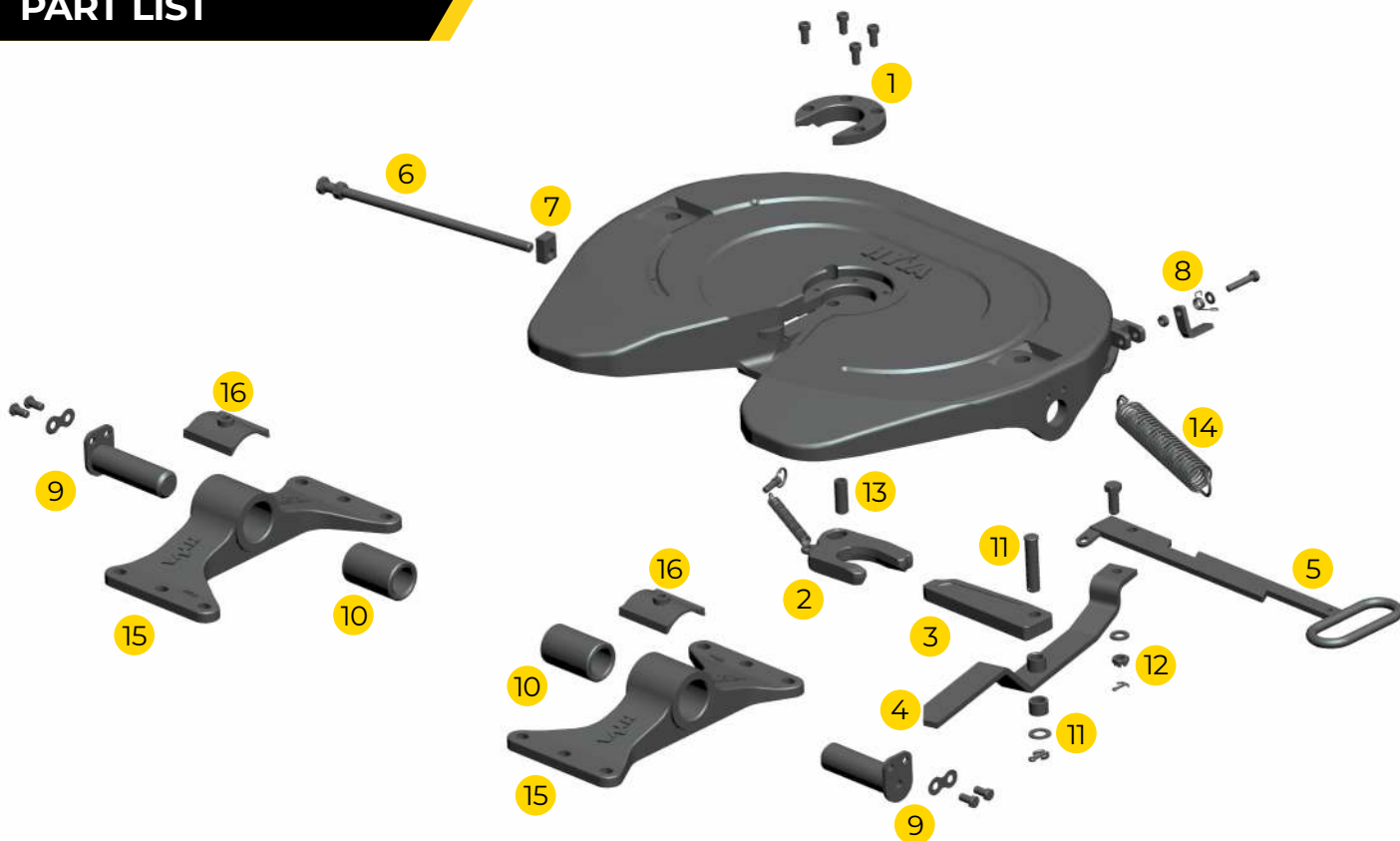


PRODUCT TYPE	FW01-S	FW01-M
PART NO.	FW0113000 FW0115000 FW0117000 FW0118000	FW0213000 FW0215000 FW0217000 FW0218000
Kingpin	2"	2"
Imposed load (t)	25	25
D value (kN)	170	170
Mounting height (mm)	135/150/172/185	135/150/172/185
Weight (kg)	126/124/126/128	126/124/126/128
ECE R55 approval	E32-55R02-0164	E32-55R02-0164

* Low maintenance product with wear-resistant plate and central - oiling is optional.



PART LIST



2"/50# FIFTH WHEEL COUPLING PART LIST

No.	Description	Part no.	Qty.	Remark
1	50 Wearing ring kit	HSF00001	1	Wear ring + Hexagon socket screw
2	50 Lock jaw kit	HSF00002	1	Lock jaw + Small tension spring + Pull pin + Split spring
3	50 locking bar	HSF00003	1	-
4	50 Lever plate kit	HSF00004	1	-
5	50 Pull handle kit	HSF00005	1	-
6	50 Adjusting screw kit	HSF00006	1	Adjusting screw + Hexagon head nut
7	Lock block	HSF00007	1	-
8	Latch kit	HSF00008	1	Latch + Torsion spring + Flat washer + Hexagon head screw + Hexagon head nut
9	Swivel pin kit	HSF00009	2	Swivel pin + plug + Retaining sheet + Hexagon head screw
10	Rubber bushing kit	HSF00010	2	Inner bushing + Outer bushing
11	Bolt pin kit	HSF00011	1	Bolt Pin + Thick washer + Flat washer + Split pin
12	Hole pivot kit	HSF00012	1	Hole pivot + Flat washer + Hexagon head nut + Split pin
13	Pivot	HSF00013	1	-
14	50 Double tension spring kit	HSF00014	1	Outer tension spring + Inner tension spring
15	135 Pedestal	HSF00018	2	Applied in fifth wheel couplings type FW01-S and FW01-M 135 mm height
	150 Pedestal	HSF00015	2	Applied in fifth wheel couplings type FW01-S and FW01-M 150 mm height
	172 Pedestal	HSF00019	2	Applied in fifth wheel couplings type FW01-S and FW01-M 172 mm height
	185 Pedestal	HSF00017	2	Applied in fifth wheel couplings type FW01-S and FW01-M 185 mm height
16	Collar	HSF00016	2	



Hyva is a leading provider of innovative and highly efficient transport solutions for commercial vehicles used in transport, construction, mining, materials handling and environmental service industries.



BUSINESS UNIT COMPONENTS



BUSINESS UNIT CRANES



BUSINESS UNIT RECYCLING



BUSINESS UNIT ELECTRIFICATION

For more information on Hyva please visit www.hyva.com

Hyva Holding B.V.
 Antonie van Leeuwenhoekweg 37
 2408 AK Alphen aan den Rijn
 The Netherlands
 Telephone: +31 (0)172 - 42 35 55
 info@hyva.com
 www.hyva.com



or follow us on:

Disclaimer: Products shown in this brochure might be partially equipped and may not correspond to the standard version.

Country-specific regulations must be observed. Dimensions may vary. This brochure could be subjected to technical changes, errors and translation mistakes.