



BUILT FOR SERVICE

Hyva Service Cranes are light weight, versatile and state of the art with capacities of 3000 lbs. to 14,000 lbs. and many options and configurations.



ADVANTAGES

① LIGHT WEIGHT

Hyva service cranes weigh up to 40% less than competitor models which means higher payloads and better fuel economy.

② PRECISION

With lifting capacities from 3,200 lbs. to 14,000 lbs. and available reach up to 28', you're certain to get the crane that works best for you.

③ BETTER ROTATION

Get the job done quicker! Cranes with capacities of 5,000 lbs. and up feature 360 degree continuous rotation. Cranes under 5,000 lbs. capacity rotate to 400 degrees.

④ VALUE RETENTION

Numerous options, advanced safety features and superior strength-to-weight ratios guarantee there is a Hyva Service Crane perfect for your job.

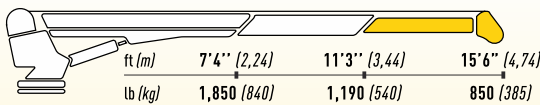
FEATURES

- Exceptional components, materials and design
- Programmable cable or radio remote controls
- Overload protection with transducer on load-limiting device
- LED display w/safety checks and diagnostics
- Emergency manual override on all solenoid valves
- Mounting and maintenance kits with every crane
- Anti-two block and empty drum rope stop
- Non-rotating winch rope
- Nitrided boom pins
- Overcenter valve on all cylinders

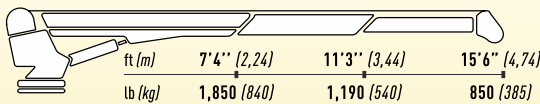
TECHNICAL DATA

Model	Crane Rating (ft lb)	No. of telescopic hydraulic extensions	Hydraulic Planetary gear winch	Patented pull line limiter system	Rotation	Digital processor LED display	Digital proportional remote control unit	A2B system	Travelling block & counterweight storage	Crane weight (lb)
HS3816 E1 H	13.500	1+1 manual	✓	✓	400°	✓	✓	✓	X	605
HS3816 E2 H	13.500	2	✓	✓	400°	✓	✓	✓	X	640
HS4416 E1 H	16.000	1+1 manual	✓	✓	400°	✓	✓	✓	✓	750
HS4416 E2 H	16.000	2	✓	✓	400°	✓	✓	✓	✓	780
HS4420 E1 H	16.000	1+1 manual	✓	✓	400°	✓	✓	✓	✓	790
HS4420 E2 H	16.000	2	✓	✓	400°	✓	✓	✓	✓	825
HS5520 E2 H	25.000	2	✓	✓	continuous non-stop	✓	✓	✓	✓	1.080
HS6621 E2 H	38.600	2	✓	✓	continuous non-stop	✓	✓	✓	✓	1.300
HS8022 E2 H	50.000	2	✓	✓	continuous non-stop	✓	✓	✓	✓	1.500
HS8028 E2 H	47.000	2	✓	✓	continuous non-stop	✓	✓	✓	✓	1.760
HS11022 E2 H	61.400	2	✓	✓	continuous non-stop	✓	✓	✓	✓	1.900
HS11028 E2 H	61.400	2	✓	✓	continuous non-stop	✓	✓	✓	✓	1.980
HS12022 E2 H	66.500	2	✓	✓	continuous non-stop	✓	✓	✓	✓	2.140
HS12028 E2 H	66.500	2	✓	✓	continuous non-stop	✓	✓	✓	✓	2.270
HS14028 E2 H	78.800	2	✓	✓	continuous non-stop	✓	✓	✓	✓	2.460

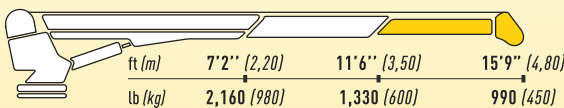
HS3816 E1 H MAX CAPACITY : lb 3,800 (kg 1,720)



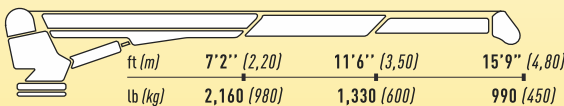
HS3816 E2 H MAX CAPACITY : lb 3,800 (kg 1,720)



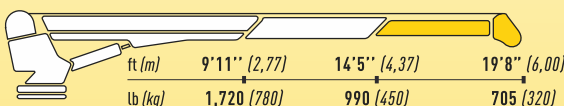
HS4416 E1 H MAX CAPACITY : lb 4,400 (kg 2,000)



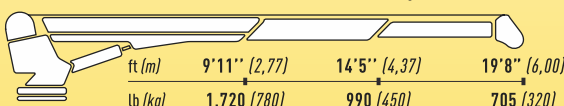
HS4416 E2 H MAX CAPACITY : lb 4,400 (kg 2,000)



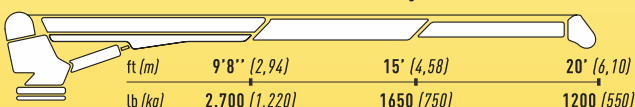
HS4420 E1 H MAX CAPACITY : lb 4,400 (kg 2,000)



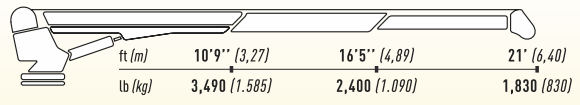
HS4420 E2 H MAX CAPACITY : lb 4,400 (kg 2,000)



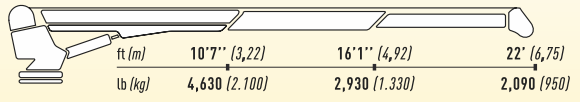
HS5520 E2 H MAX CAPACITY : lb 5,100 (kg 2,300)



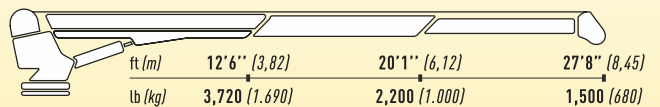
HS6621 E2 H MAX CAPACITY : lb 6,610 (kg 3,000)



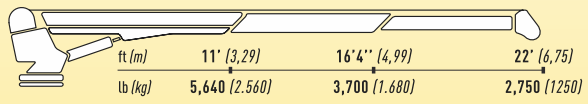
HS8022 E2 H MAX CAPACITY : lb 8,150 (kg 3,700)



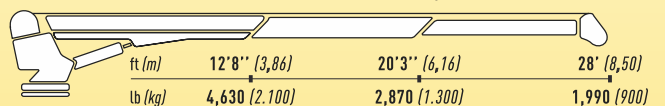
HS8028 E2 H MAX CAPACITY : lb 8,150 (kg 3,700)



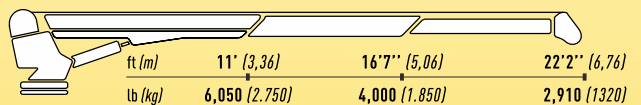
HS11022 E2 H MAX CAPACITY : lb 11,020 (kg 5,000)



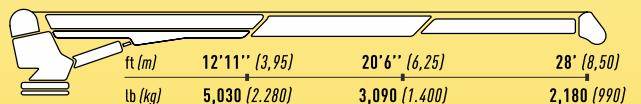
HS11028 E2 H MAX CAPACITY : lb 11,020 (kg 5,000)



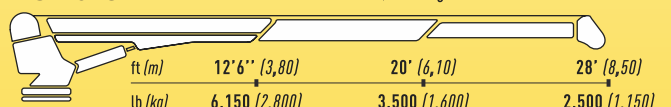
HS12022 E2 H MAX CAPACITY : lb 11,900 (kg 5,400)



HS12028 E2 H MAX CAPACITY : lb 11,900 (kg 5,400)



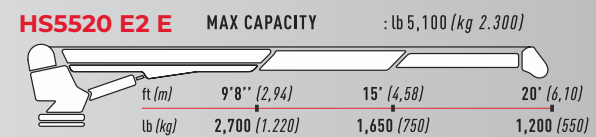
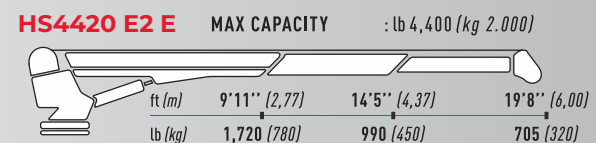
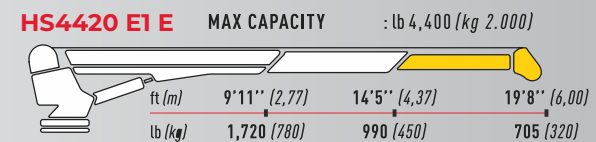
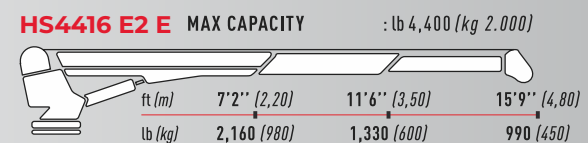
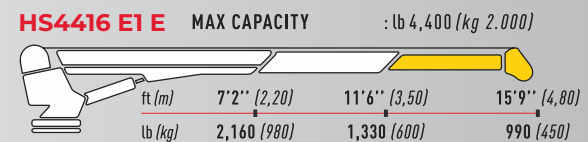
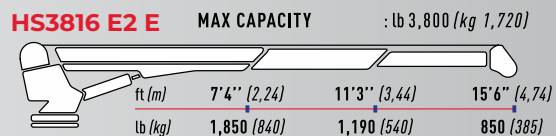
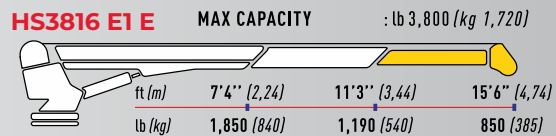
HS14028 E2 H MAX CAPACITY : lb 14,000 (kg 6,350)



ELECTRO-HYDRAULIC CRANES

TECHNICAL DATA

Model	Crane Rating (ft lb)	No. of telescopic hydraulic extensions	Hydraulic Planetary gear winch	Patented pull line limiter system	Rotation	Digital processor LED display	Digital proportional remote control unit	A2B system	Travelling block & counterweight storage	Crane weight (lb)
HS3816 E1 E	13,500	1+1 manual	✓	✓	400°	✓	✓	✓	✗	650
HS3816 E2 E	13,500	2	✓	✓	400°	✓	✓	✓	✗	680
HS4416 E1 E	16,000	1+1 manual	✓	✓	400°	✓	✓	✓	✓	790
HS4416 E2 E	16,000	2	✓	✓	400°	✓	✓	✓	✓	825
HS4420 E1 E	16,000	1+1 manual	✓	✓	400°	✓	✓	✓	✓	840
HS4420 E2 E	16,000	2	✓	✓	400°	✓	✓	✓	✓	870
HS5520 E2 E	25,000	2	✓	✓	continuous non-stop	✓	✓	✓	✓	1,060



Standard manual extensions



ONE CRANE, **SERVICING MANY APPLICATIONS**



AGRICULTURE



CONSTRUCTION



MINING



MUNICIPALITY



OIL & GAS

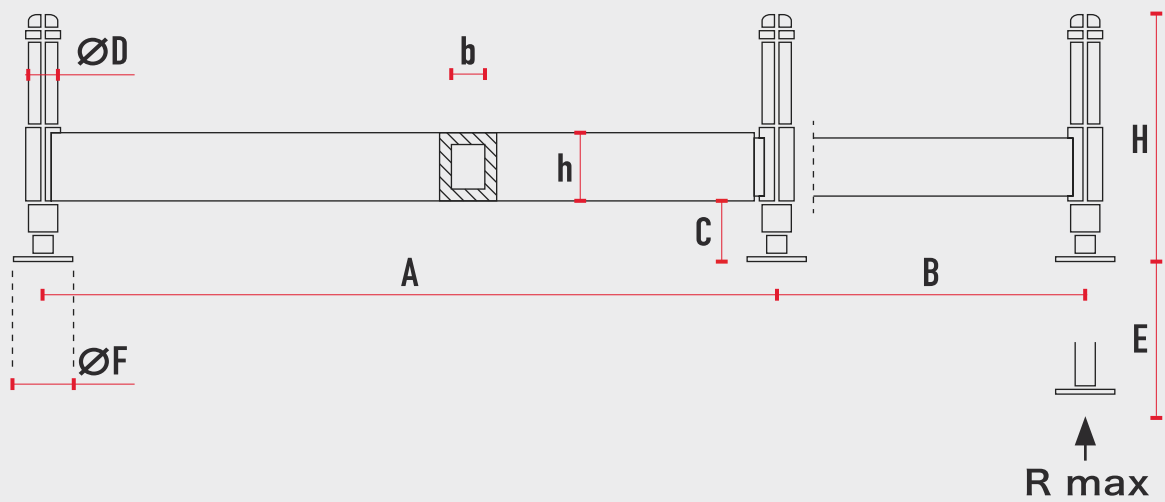


RENTAL



OUTRIGGERS

Full range of outriggers available for every model.



TECHNICAL DATA

	Outrigger type	For cranes	R max lb	A in	B in	C in		D in	E in	F in	H in	h x b in	Weight lb
						min.	max.						
Manual In/Out Manual Up/Down	S MM	HS3315 / HS4416 / HS4420	5,060	86"	39 3/8"	3 1/8"	16 3/16"	16 3/16"	17 1/2"	5 1/8"	26"	6 9/32" x 4"	214
Manual In/Out Hydraulic Up/Down	S MH	HS3315 / HS4416 / HS4420	5,060	86"	39 3/8"	7"	19"	2 3/4"	15 5/16"	6"	26 1/2"	6 9/32" x 4"	254
	M MH	HS5520 / HS6621 / HS8022 / HS8028	13,200	87 19/32"	39 3/8"	8 1/2"	19 1/2"	3 3/8"	17 29/32"	6"	28 3/8"	8" x 4"	415
Hydraulic In/Out Hydraulic Up/Down	M HH	HS5520 / HS6621 / HS8022 / HS8028	13,200	87 19/32"	39 3/8"	8 1/2"	19 1/2"	3 3/8"	17 29/32"	6 5/16"	28 3/8"	8" x 4"	445
	L HH	HS8020 / HS8028 / HS11022 / HS11028	15,400	86"	39 3/8"	7 7/8"	23 5/8"	3 3/4"	21 3/4"	7 3/4"	32 3/16"	8" x 4 13/16"	538
	XL HH	HS11022 / HS11028 / HS14028	24,700	93 29/32"	39 3/8"	7 17/32"	23 1/32"	4 23/32"	21 21/32"	7 7/8"	32 5/32"	8 21/32" x 4 7/8"	600

S **M** **M**

Stabilizers Extension: **M = Manual; H = Hydraulic**
 Crossbeam Extension: **M = Manual; H = Hydraulic**
 Outriggers' class (**S; M; L; XL**)

110 countries
+3,500 employees
20,000 customers
+30 subsidiaries
12 production facilities



Hyva is a leading provider of innovative and highly efficient transport solutions for commercial vehicles used in transport, construction, mining, materials handling and environmental service industries.

Founded in 1979 in the Netherlands, the company has a global presence with more than 30 wholly owned subsidiaries, extraordinary service coverage and 12 manufacturing facilities in Brazil, China, Europe and India.

For more information on Hyva, please visit www.hyva.com

or follow us on:



Hyva (U.S.A) Corporation
864 Lively Blvd,
Wood Dale, Illinois 60191, USA
Phone: +1-630-227-9020
Fax: +1-630-227-9029
sales@hyvausa.com
www.hyva.com



Quality and
environmental certified

DEALER STAMP