

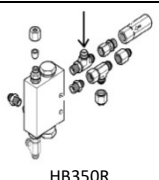

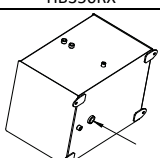


<b>Max dynamic moment (daNm)</b>	40500
----------------------------------	-------

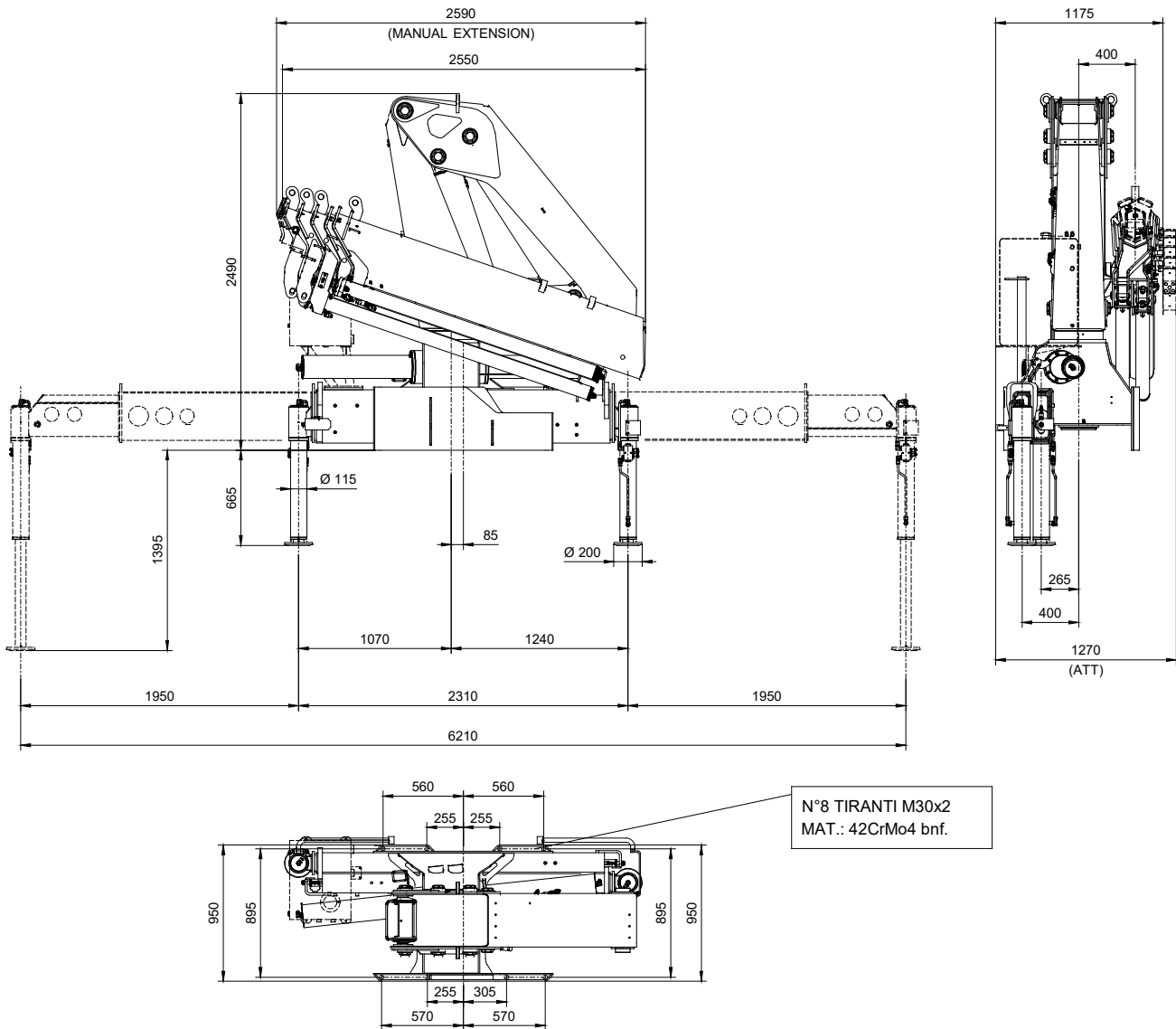
	<b>Version</b>	<b>Q<sub>max</sub></b>
<b>Max load (kg)</b>	E2	8100
	E3	7930
	E4	7790

	<b>Version</b>	<b>STD</b>
<b>Crane weight (kg)</b>	E2	3725
	E3	3950
	E4	4160

	<b>STD</b>
<b>Max force on the stabilizer leg</b>	13420 daN
<b>Max standard stabilizer pressure on the ground</b>	42.8 daN/cm <sup>2</sup>
<b>Max working pressure</b>	300 bar
<b>Max oil flow</b>	50 l/min
<b>Oil tank capacity</b>	160 l
<b>Slewing moment</b>	3525 daNm
<b>Slewing angle</b>	380°
<b>Absorbed power</b>	32.5 kW
<b>Design standard</b>	EN 12999 EN 13001

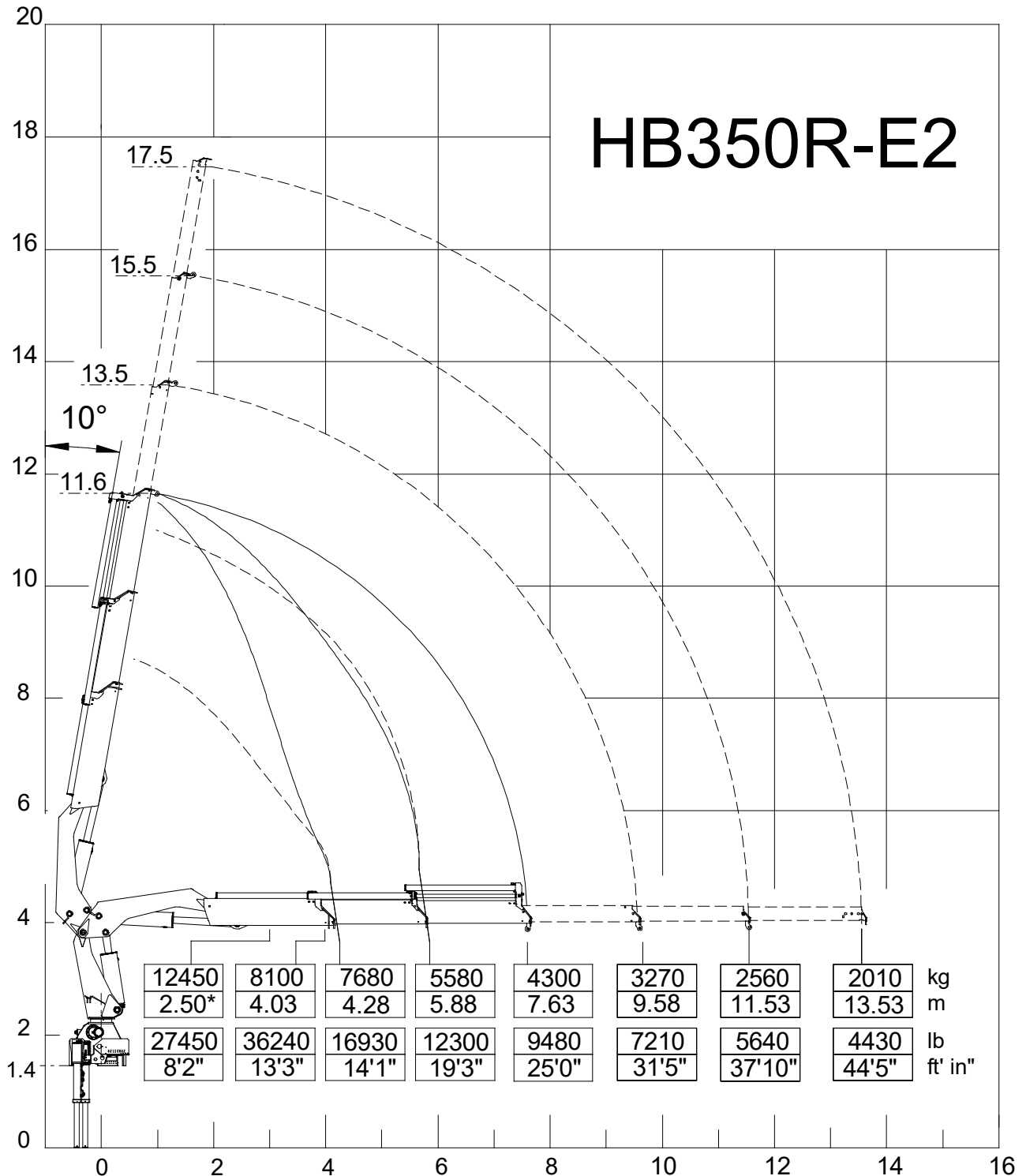
<b>Fittings for connection with pump</b>		
<b>Control valve pressure line</b>	 HB350R	 HB350RX
<b>Tank suction line</b>		

# HB350R TECHNICAL SHEET OVERALL DIMENSION



<b>Crane mounting bolts</b>	<b>42CrMo4+QT EN10083-3 N°8 M30x2</b>
<b>Tightening torque</b>	<b>888 Nm</b>

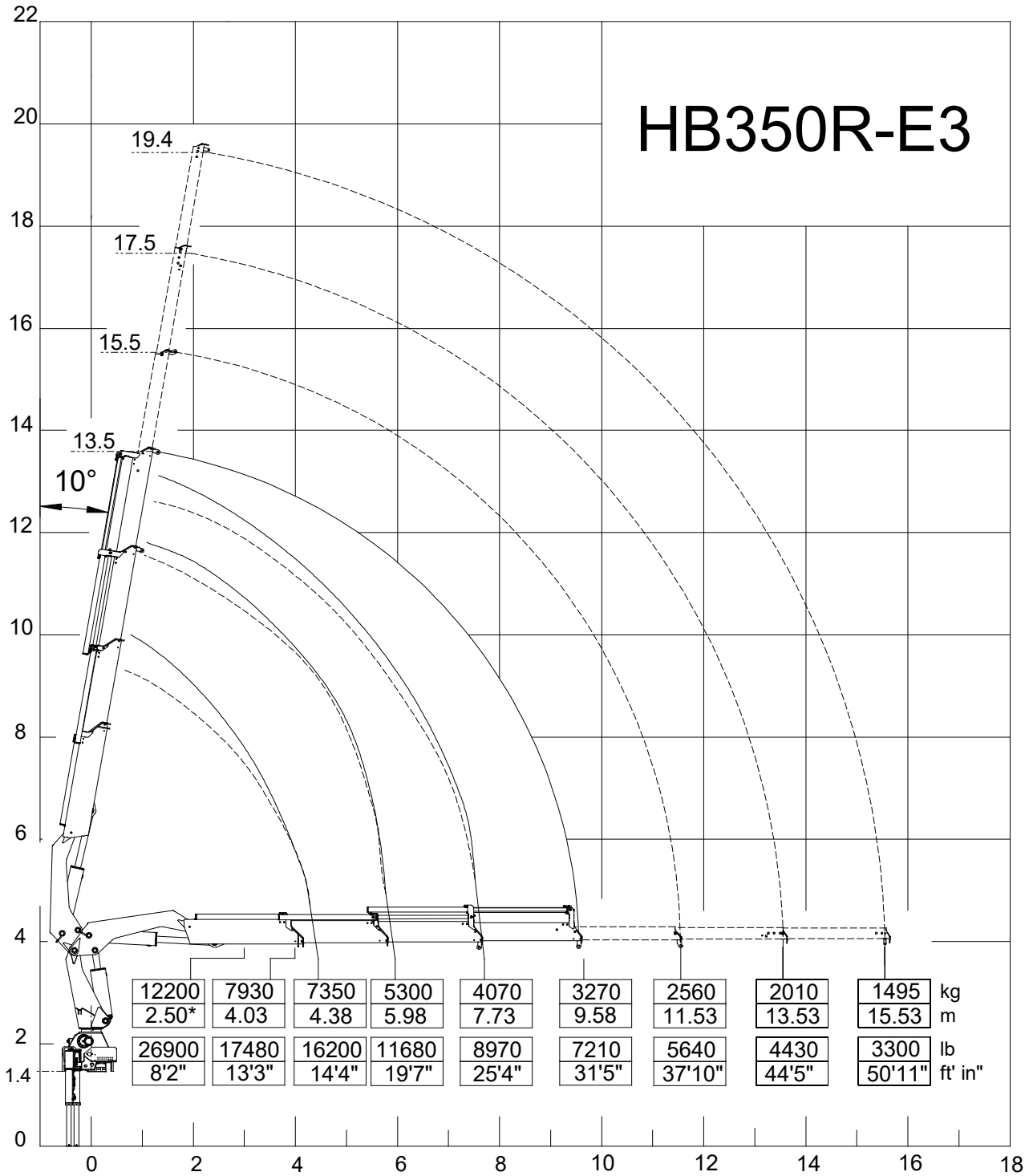
## HB350R E2



(\*): fixed hook capacity (optional)

Lifting capacity = 32,8 tm

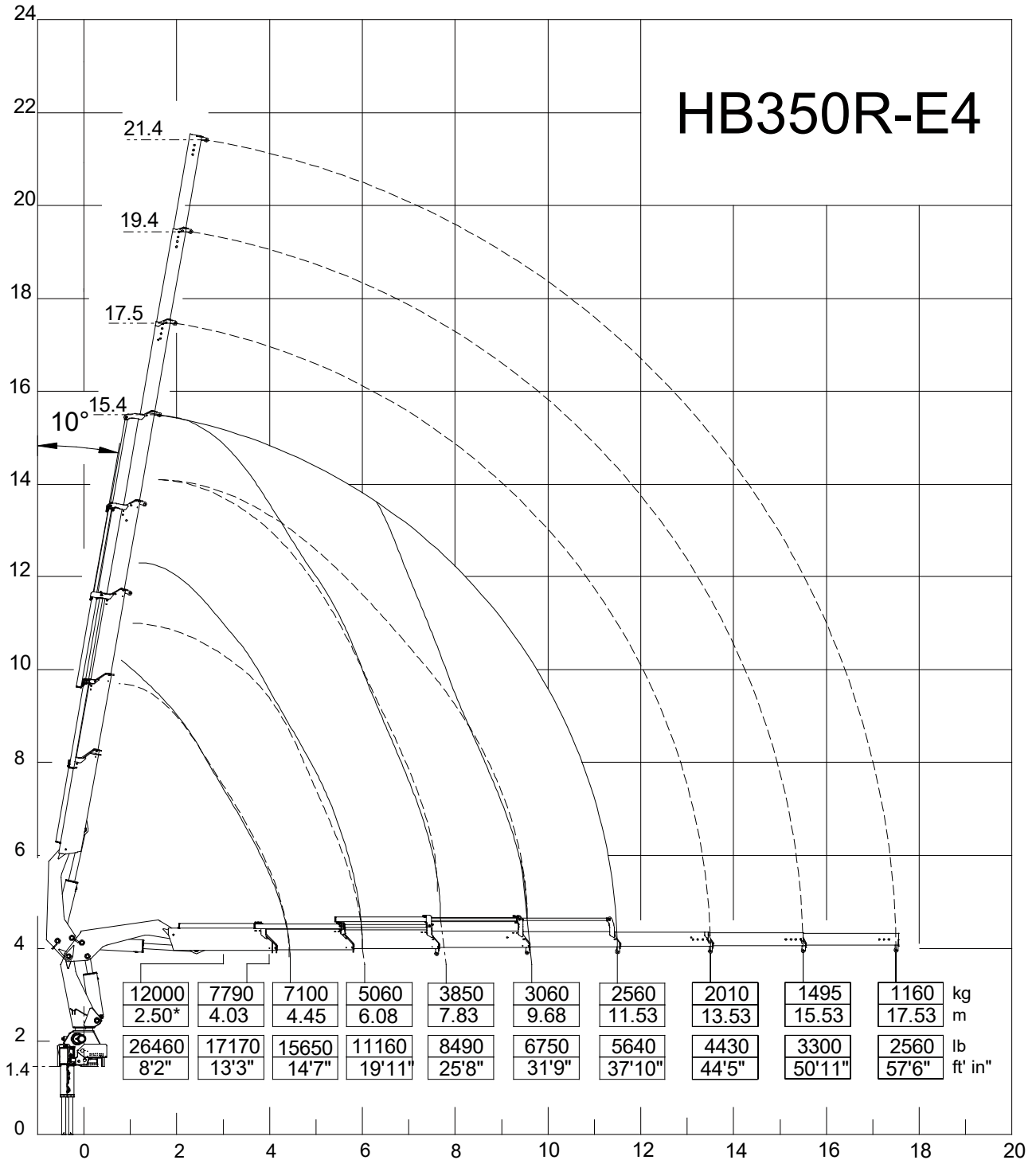
## HB350R E3



(\*): fixed hook capacity (optional)

Lifting capacity = 32,2 tm

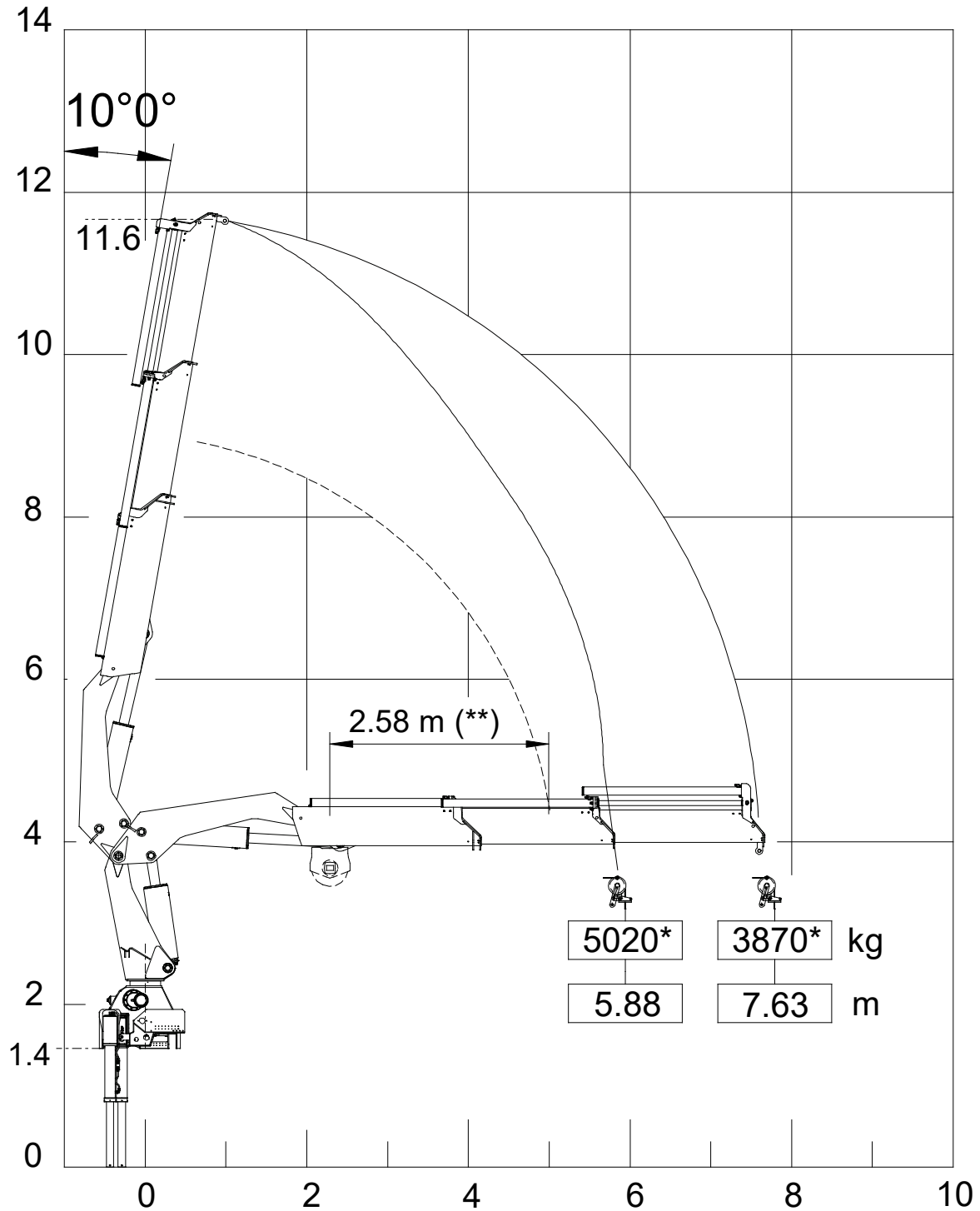
## HB350R E4



(\*): fixed hook capacity (optional)

Lifting capacity = 31,6 tm

## HB350R E2

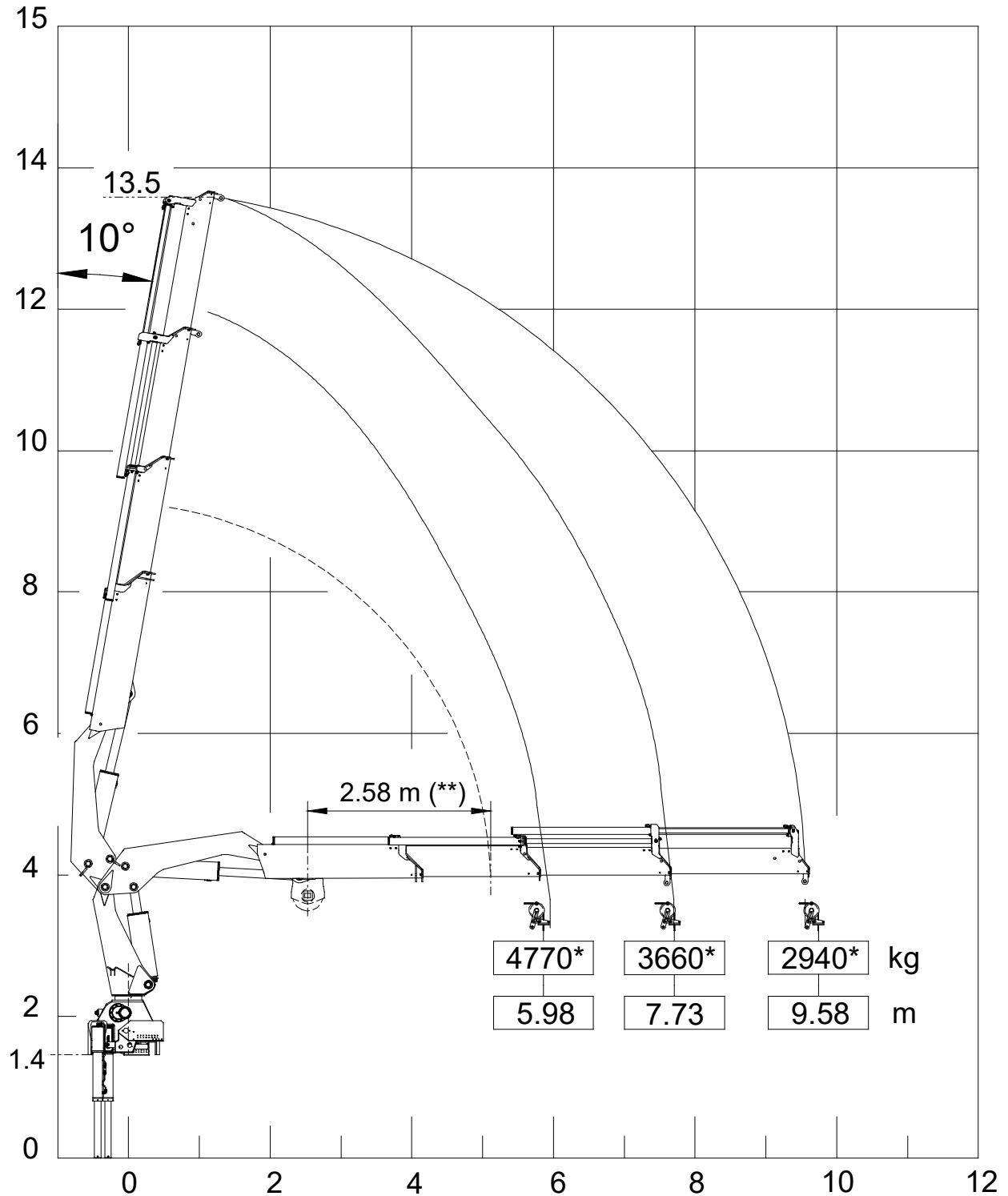


(\*) = Winch pulley with double line pull

(\*\*) = Min distance for winch use

OSTA Winch OS-3500 -- MAX Winch direct pull 2700 kg

## HB350R E3



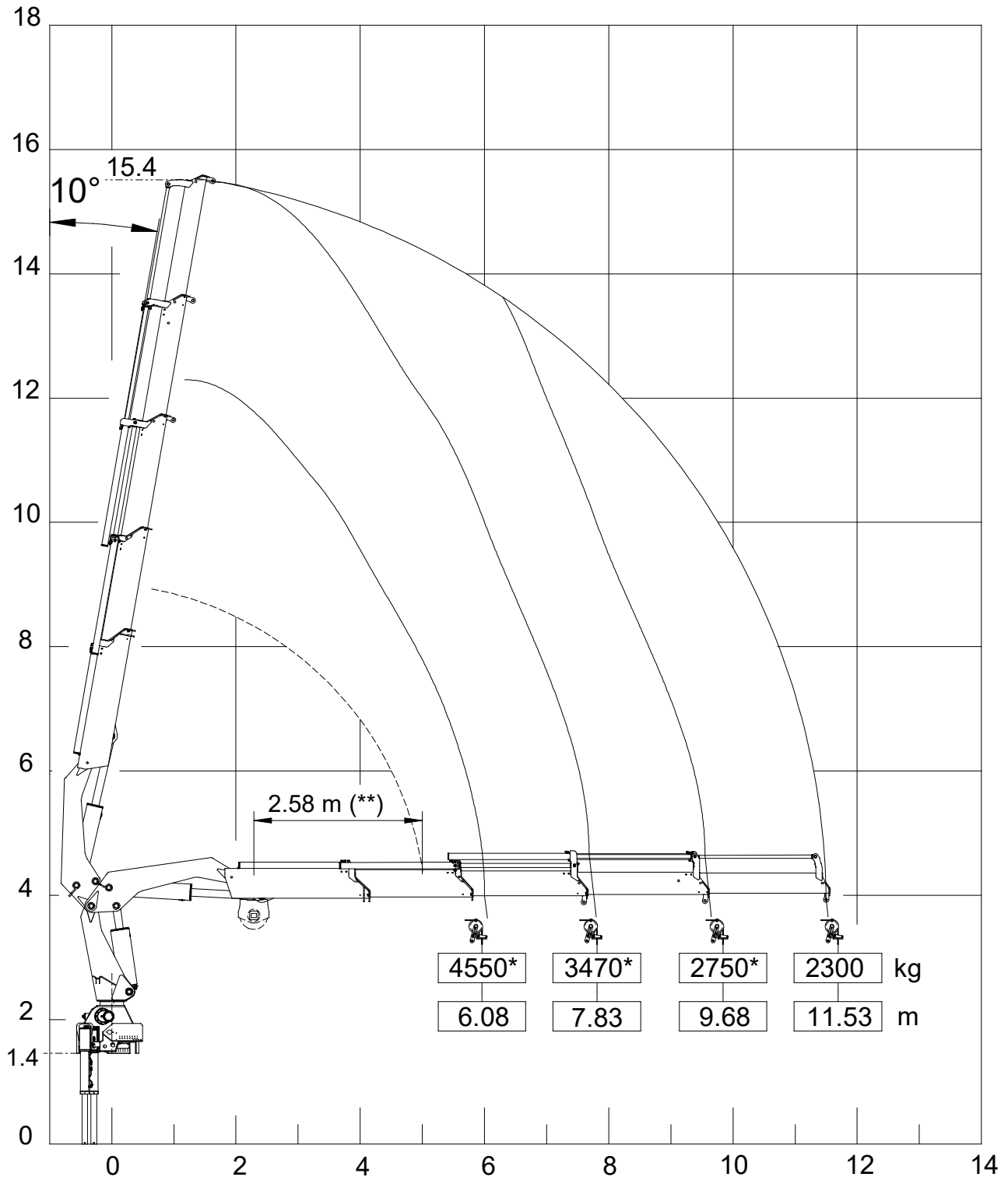
(\*) = Winch pulley with double line pull

(\*\*) = Min distance for winch use

OSTA Winch OS-3500 -- MAX Winch direct pull 2700 kg



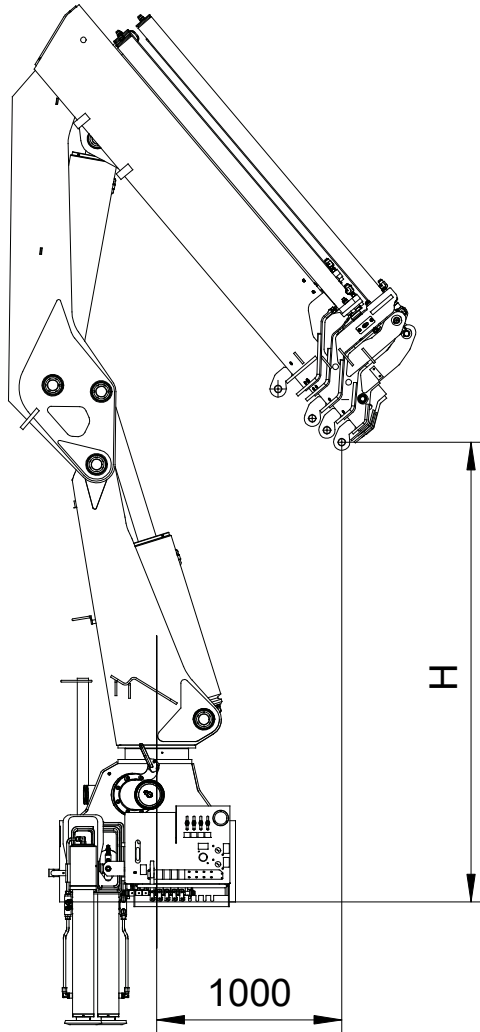
## HB350R E4



(\*) = Winch pulley with double line pull

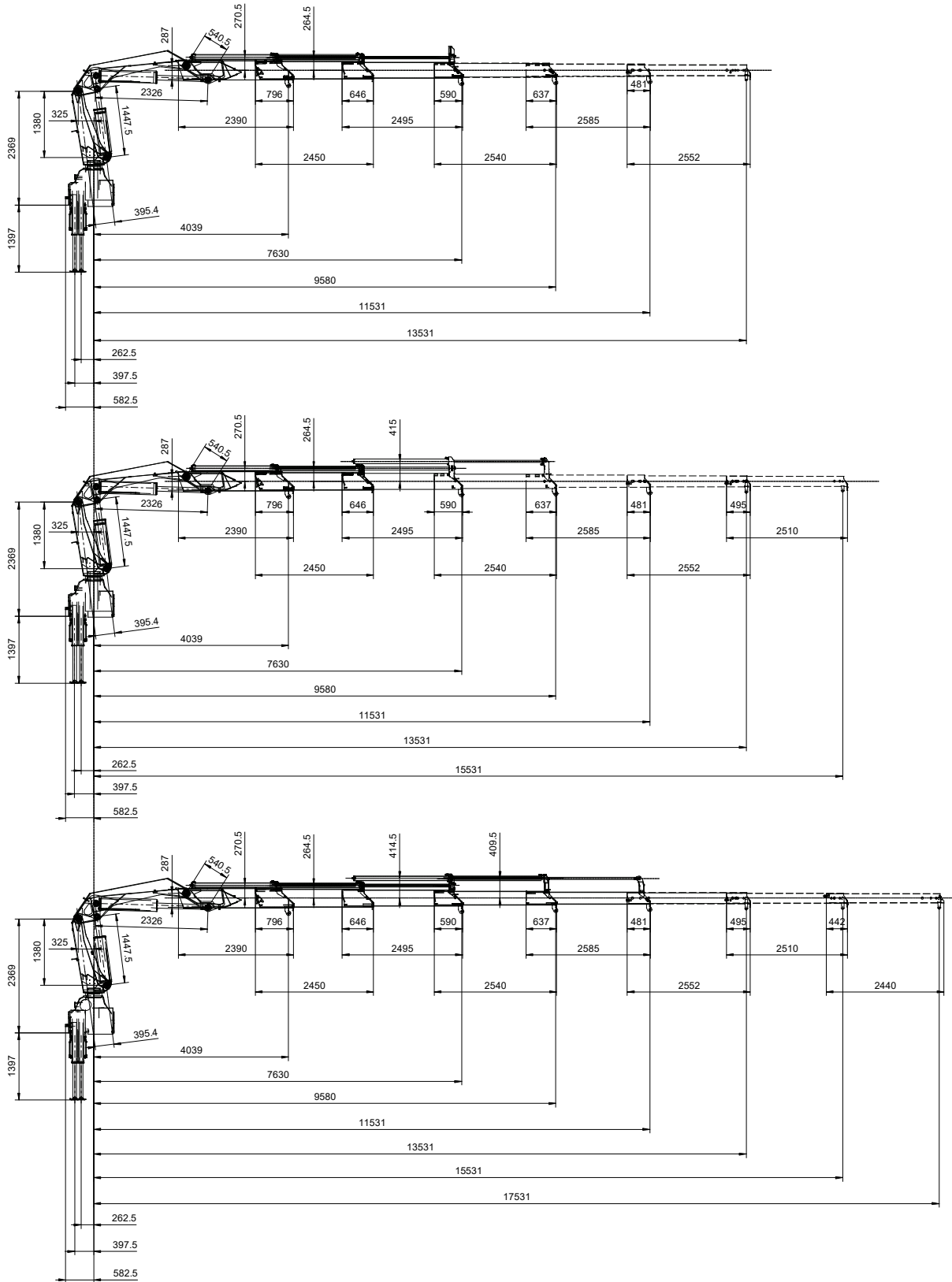
(\*\*) = Min distance for winch use

OSTA Winch OS-3500 -- MAX Winch direct pull 2700 kg



	H [mm]
<b>E2</b>	2720
<b>E3</b>	2600
<b>E4</b>	2490

# HBR350 TECHNICAL SHEET COLUMN - BOOM - DIMENSIONS



## LIFTING CYLINDER

Cylinder bore	210
Cylinder external diameter	255
Rod diameter	100
Pitch (open)	1861
Pitch (closed)	1114.5
Stroke	745
Fittings	1/2" G
Articulation pin Ø	65
Pin steel	39NiCrMo3

## ARTICULATION CYLINDER

Cylinder bore	210
Cylinder external diameter	255
Rod diameter	100
Pitch (open)	2326
Pitch (closed)	1341
Stroke	985
Fittings	1/2" G
Articulation pin Ø	65
Pin steel	39NiCrMo3

## 1<sup>ST</sup> EXTENSION CYLINDER

Cylinder bore	85
Cylinder external diameter	100
Rod diameter	60 – 40
Pitch (open)	1729
Pitch (closed)	129
Stroke	1600
Fittings	1/2" G
Fixing pin Ø	35
Pin steel	39NiCrMo3 Bnf

## 2<sup>ND</sup> EXTENSION CYLINDER

Cylinder bore	85
Cylinder external diameter	100
Rod diameter	70 - 55
Pitch (open)	1879
Pitch (closed)	129
Stroke	1750
Fittings	1/2" G
Fixing pin Ø	35
Pin steel	39NiCrMo3 Bnf

## 3<sup>RD</sup> EXTENSION CYLINDER

Cylinder bore	80
Cylinder external diameter	95
Rod diameter	50 - 35
Pitch (open)	1979
Pitch (closed)	129
Stroke	1850
Fittings	1/2" G
Fixing pin Ø	30
Pin steel	C40

## 4<sup>TH</sup> EXTENSION CYLINDER

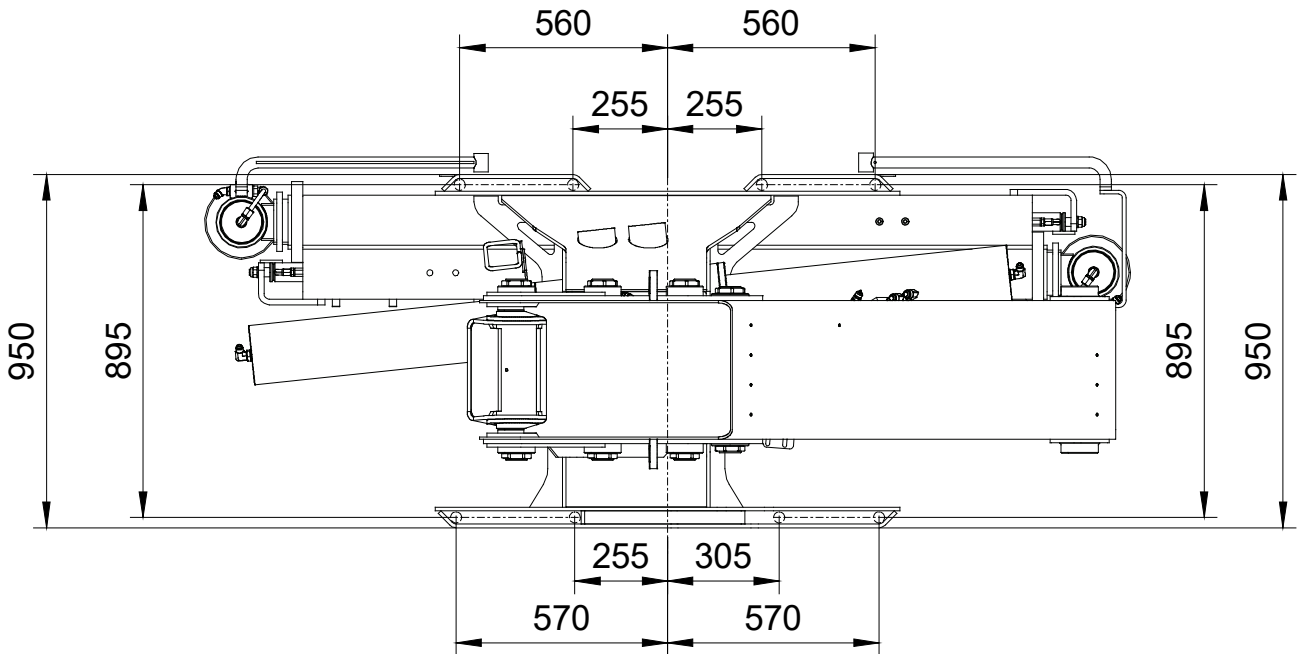
Cylinder bore	80
Cylinder external diameter	95
Rod diameter	45
Pitch (open)	1979
Pitch (closed)	129
Stroke	1850
Fittings	1/2" G
Fixing pin Ø	30
Pin steel	C40

## STABILIZER EXTENSION CYLINDER

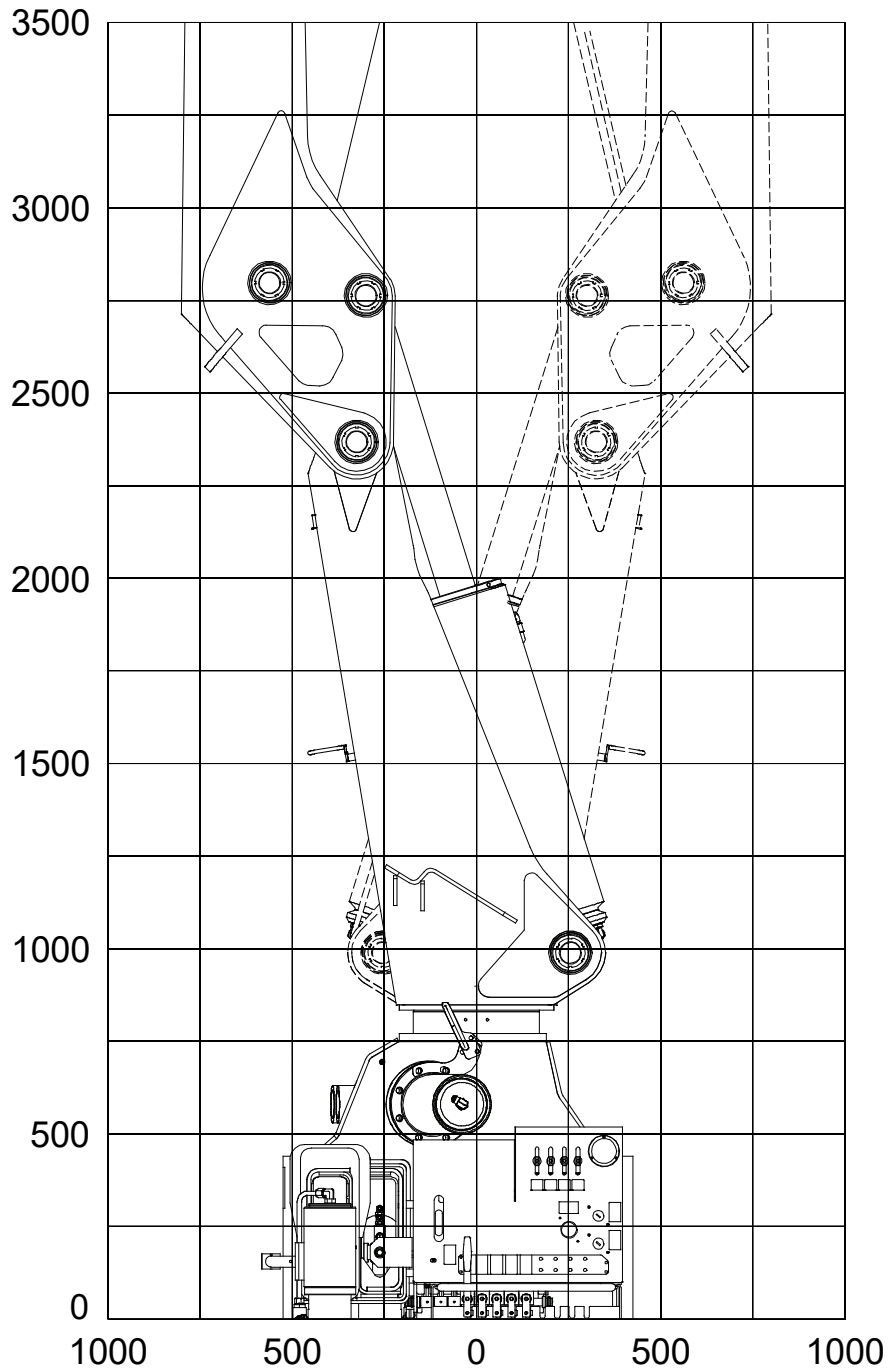
Cylinder bore	40
Cylinder external diameter	50
Rod diameter	25
Pitch (open)	4084
Pitch (closed)	2134
Stroke	1950
Fittings	9/16" - 18
Articulation pin Ø	20
Pin steel	C40

## STABILIZER CYLINDER

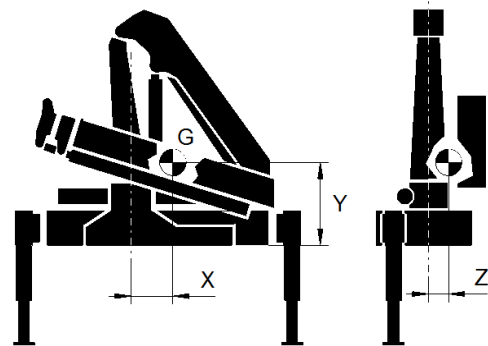
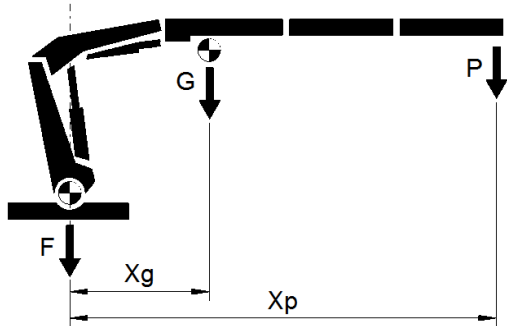
Cylinder bore	100
Cylinder external diameter	115
Rod diameter	75
Pitch (open)	1468
Pitch (closed)	732
Stroke	736
Fittings	1/2" G
Fixing pin Ø	-
Pin steel	-



<b>Tie mounting rods</b>	N°8 M30x2 42CrMo4 Bnf.
<b>Rotation cylinder fixing bolts</b>	N°8 M16X60 12.9 UNI 5931 <b>Tightening torque 291 Nm</b>



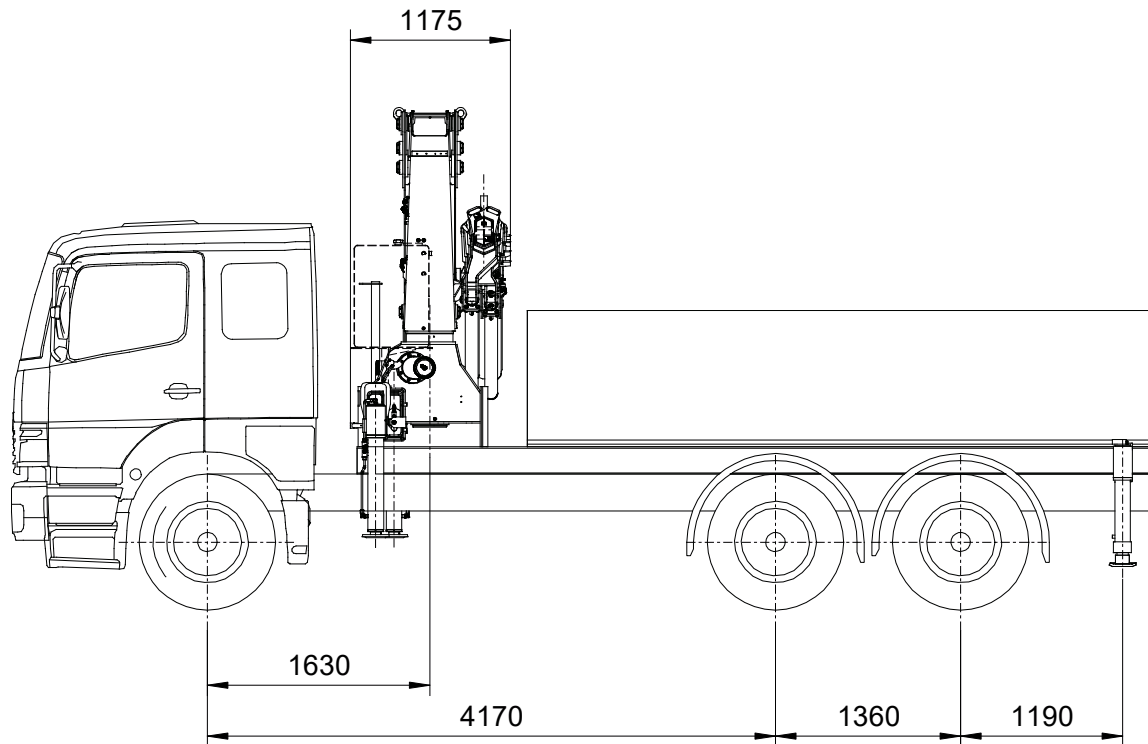
# HB350R TECHNICAL SHEET WEIGHTS - CENTER OF GRAVITY



HB350R	F [kg]	G [kg]	Xg [m]	P [kg]	Xp [m]	TL [kg]	X [mm]	Y [mm]	Z [mm]
E2	2260	1465	2.66	4300	7.63	5375	145	891	-12
E3		1690	3.34	3270	9.58	4088	132	900	12
E4		1900	4.07	2560	11.53	3206	120	907	29

F = weight of fixed parts  
 G = weight of extension booms  
 Xg = distance of G from column axis  
 P = nominal load  
 Xp = distance of P from column axis  
 TL = stability test load  
 X, Y, Z = center of gravity coordinates (closed crane)

# HB350R TECHNICAL SHEET MIN TRUCK WITH SUPPLEMENTARY STABILIZERS



**GVW= 24 t**

## CHASSIS DATA

### Front axle

Front axle tare weight = 3200 kg

Allowable front axle weight = 6000 kg

### Rear axle

Rear axle tare weight = 3100 kg

## OUTFIT WEIGHTS

Body weight = 1000 kg

Crane weight = 4160 kg (HB350R E4)

Counterframe weight = 950 kg

## Rear beam stabilizers

Min. width = 5000 mm

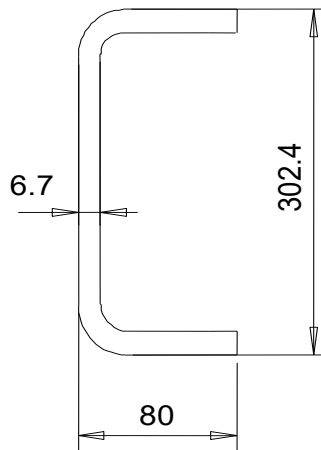
Rear stabilizer weight = 575 kg

**Stability index = 1,3**

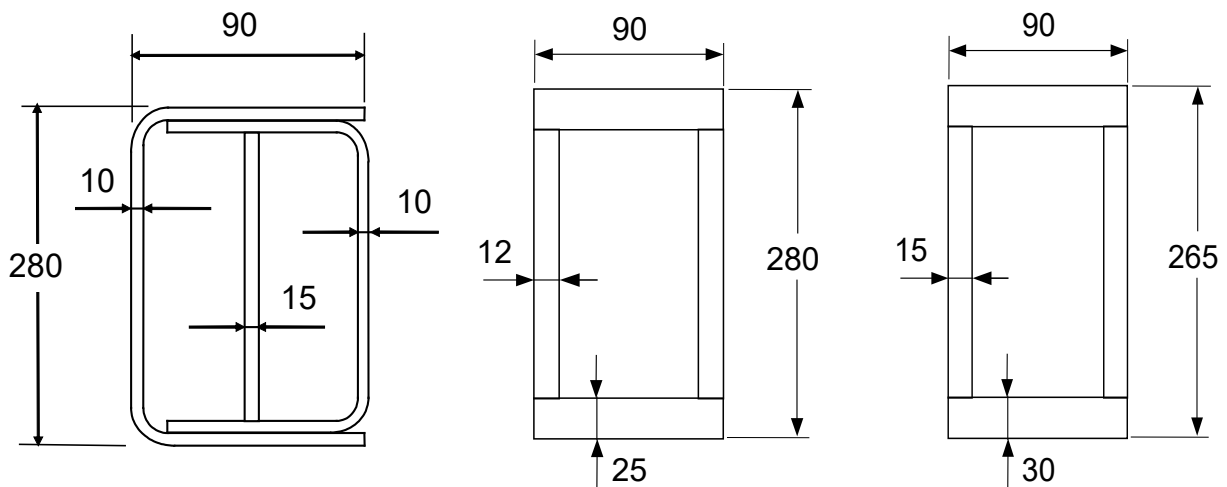


<b>Max dynamic moment [daNm]</b>	40500
----------------------------------	-------

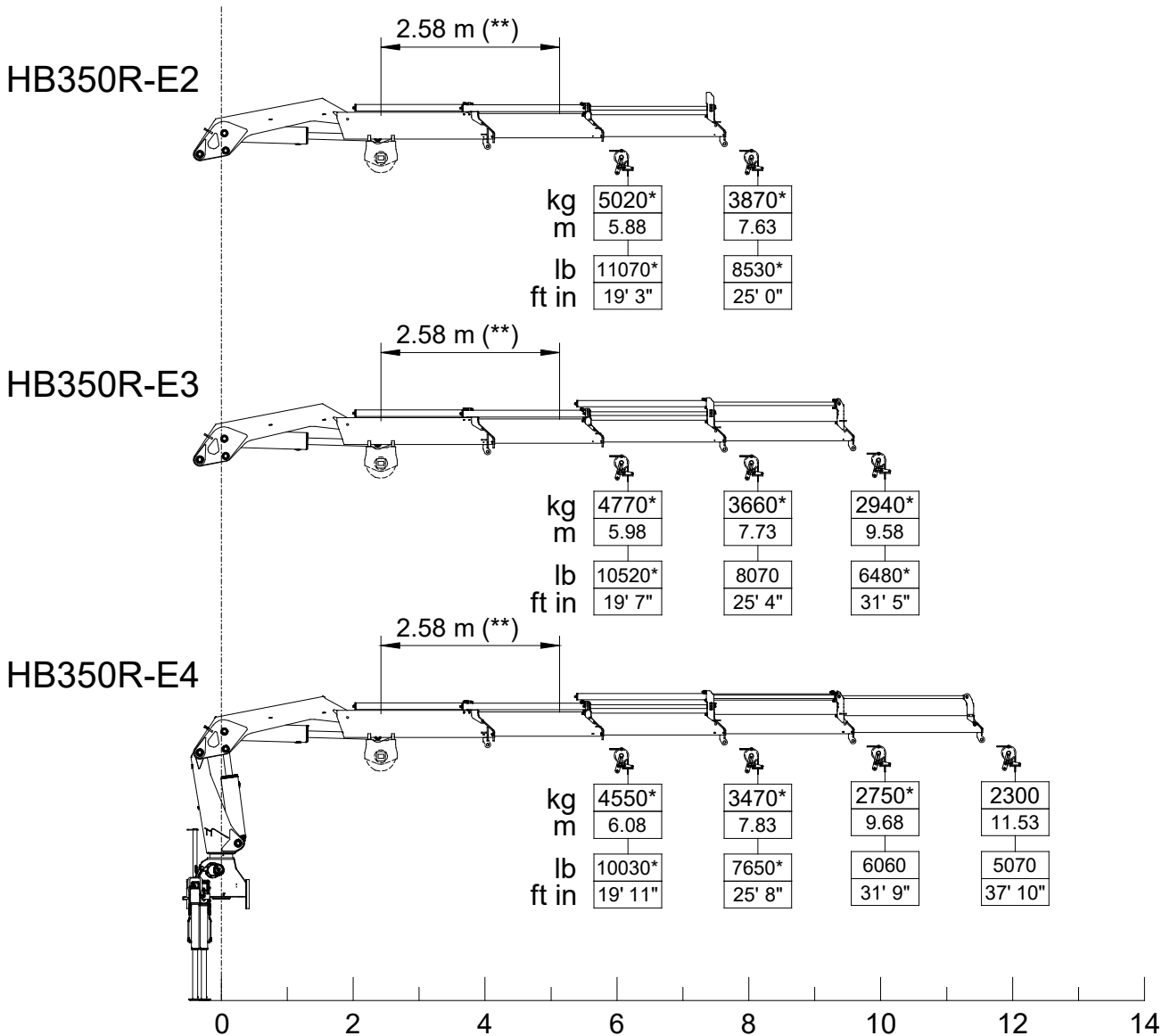
**Min frame section** (truck GVW = 24 ton)



**Min counterframe section (steel S355)**



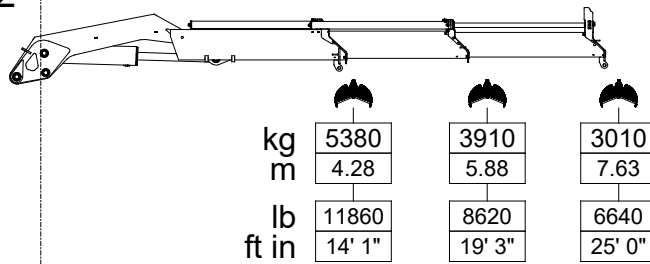
Max winch direct pull (kg)	2700
----------------------------	------



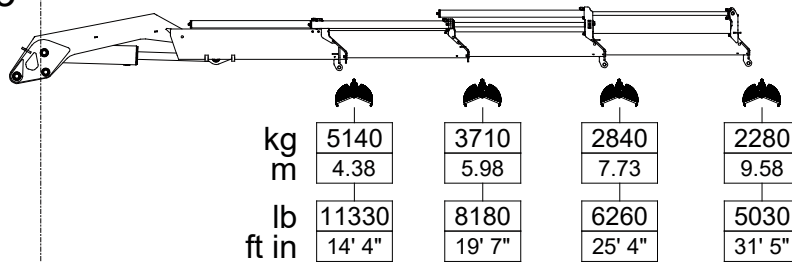
(\*) = Winch pulley with double line pull    (\*\*) = Min distance for using the winch  
 OSTA Winch OS-3500 -- MAX Winch direct pull 2700 kg

Max allowable weight (kg)	420
Max working pressure (bar)	240

## HB350R-E2



## HB350R-E3



## HB350R-E4

