



TITAN HOOKLOADERS

TITAN HOOKLOADER

Hyva Titan Hookloaders are designed for daily use in rugged environments and are well known for their reliability and low maintenance. Aimed at the medium to heavy truck classes the Titan hookloader can handle a wide variety of loads and containers. Further enhancing Hyva's track record for innovation and versatility, Titan is the most advanced hookloader available today. Due to the extended range of advanced features and benefits, hookloader operation is now faster, safer, more efficient, and more productive than ever.

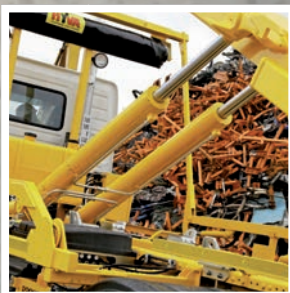
Titan. For work without limit



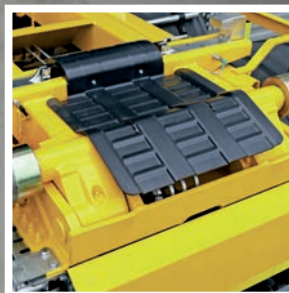
HIGHLIGHTS



Subframe support brackets



Main cylinders



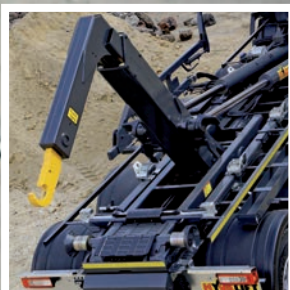
Reduced height



Zinc-plated container supports



Exchangeable hooks



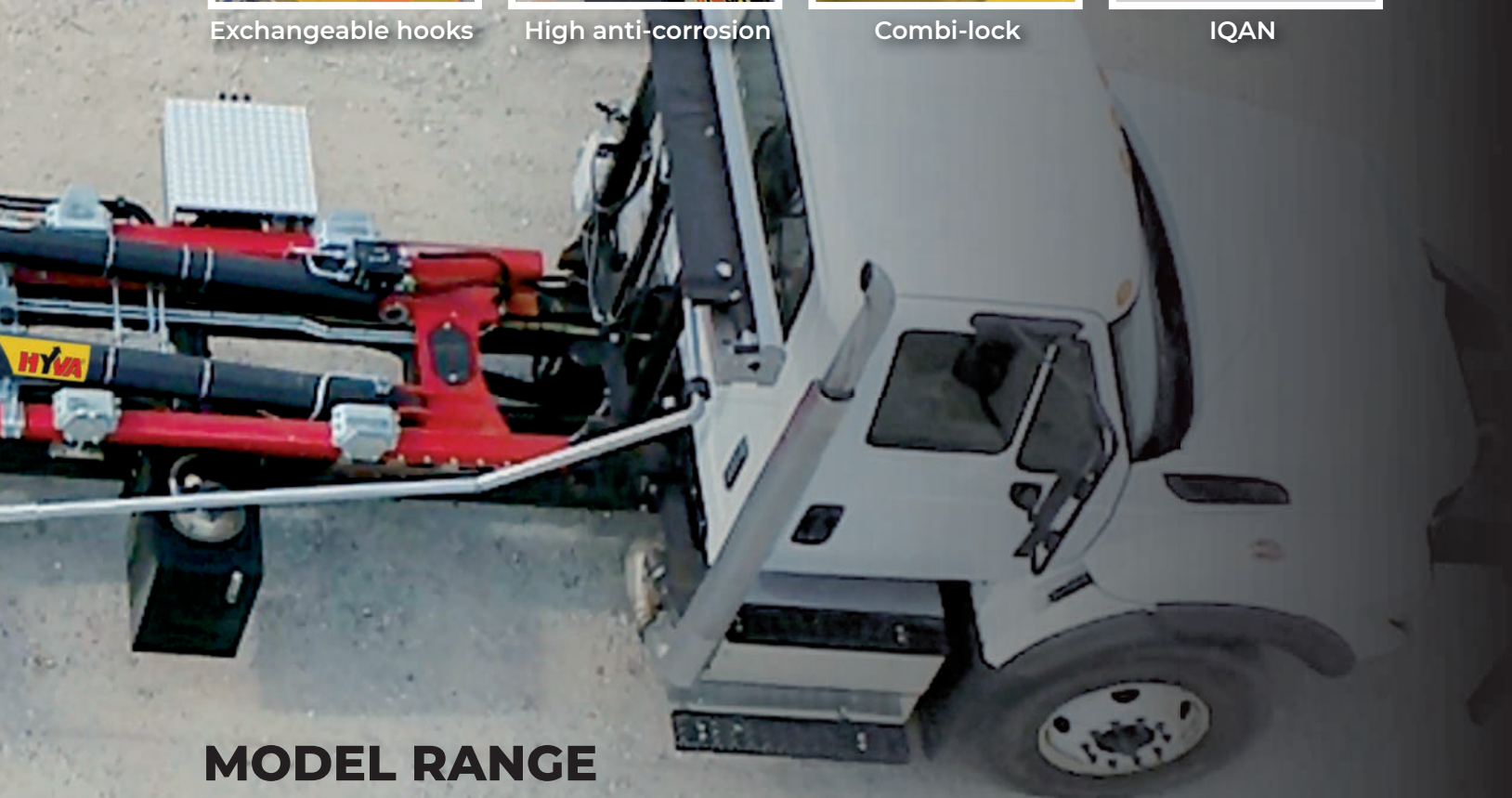
High anti-corrosion



Combi-lock



IQAN



MODEL RANGE

Hyva Equipment			Truck Chassis		Container
Model	Lifting Capacity	Type	GVW	Axles	Length (min-max)
T18	40,000 lbs	S	48,000-66,000 lbs	3	13 - 21 ft
T20	45,000 lbs	S, SK	57,000-70,000 lbs	3 / 4	14.5 - 22 ft
T26	60,000 lbs	S, SK	66,000-82,000 lbs	4	19.5 - 22 ft

TITAN HOOKLOADER



BOLT IT ALL ACCESSORIES

The new Titan features a line of accessories that can be bolted straight onto the hookloader. No more searching for space on the chassis or leaving out comfort functionalities with a Titan. The specially designed brackets can hold a wide variety of accessories from toolboxes to fenders.



EASY MOUNTING

The Titan series offers an easy way of mounting. Joining the hookloader to the truck with a chassis specific mounting kit achieves repeatable quality time and time again. Hyva prides itself in creating chassis specific kits for every chassis.



COMBI LOCK IT ALL

Fit your Titan with the combi-lock and gain the ability to lock every container to your system. Proven hydraulic locking securing your load every time. One lock for both outside and inside locking.

FEATURES



FACTORY END COAT

Coated in a highly corrosion resistant end coat, the Titan will stand the test of time. Standard coated in sleek black end coat from the factory. With the option to be coated in any colour, as long as there is a RAL code for it.



CONTROL IT YOUR WAY

Select one of the many options for controlling your Titan. Select the operators' favourite pneumatic control or go with the more advanced electric system.



ROBUST

Unparalleled standard of hardness and toughness achieved by using combined abrasive resistant floor plates with Lifetime High quality Anti Corrosion Painting which offers an increased protection and pre-serves the resale value.

SEGMENTS FOR HOOKLOADER USE



FIRE FIGHTING



AGRICULTURE



WASTE
HANDLING



RECYCLING



MUNICIPALITY



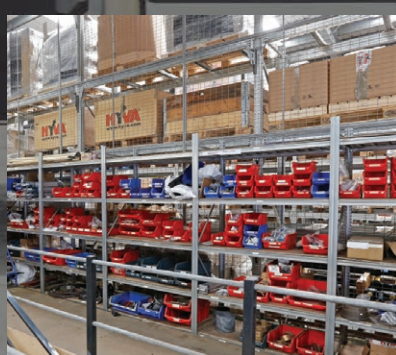
CONSTRUCTION



TRUST OUR SERVICE. OVER 25,000 CUSTOMERS DO SO **EVERY DAY.**

Count on us to be there for you when you need us. Our international sales and after-sales teams from our own subsidiaries are exceptionally experienced, and a vast network of service partners and dealers provide world-class customer support through our Hyva approved service workshops.

Our unwavering confidence in our products allows us to offer the best possible guarantees on every purchase. And our maintenance contracts are customised, with highly cost-efficient repair and maintenance contracts. After all, we're in this for the long haul.



Key Facts:

- The best warranty in our industry
- Widest Global Hyva Service coverage
- Parts Availability
- Quick and Reliable Support

110 countries
+3,500 employees
20,000 customers
+30 subsidiaries
12 production facilities



Hyva is a leading provider of innovative and highly efficient transport solutions for commercial vehicles used in transport, construction, mining, materials handling and environmental service industries.

Founded in 1979 in the Netherlands, the company has a global presence with more than 30 wholly owned subsidiaries, extraordinary service coverage and 12 manufacturing facilities in Brazil, China, Europe and India.

For more information on Hyva, please visit www.hyva.com

or follow us on:



Hyva Corporation

864 Lively Blvd,
Wood Dale, Illinois 60191, USA
Phone: +1-630-227-9020
Fax: +1-630-227-9029
salesusa@hyva.com
www.hyva.com



Quality and
environmental certified

DEALER STAMP