


EDGE LINE
RAISE YOUR GAME

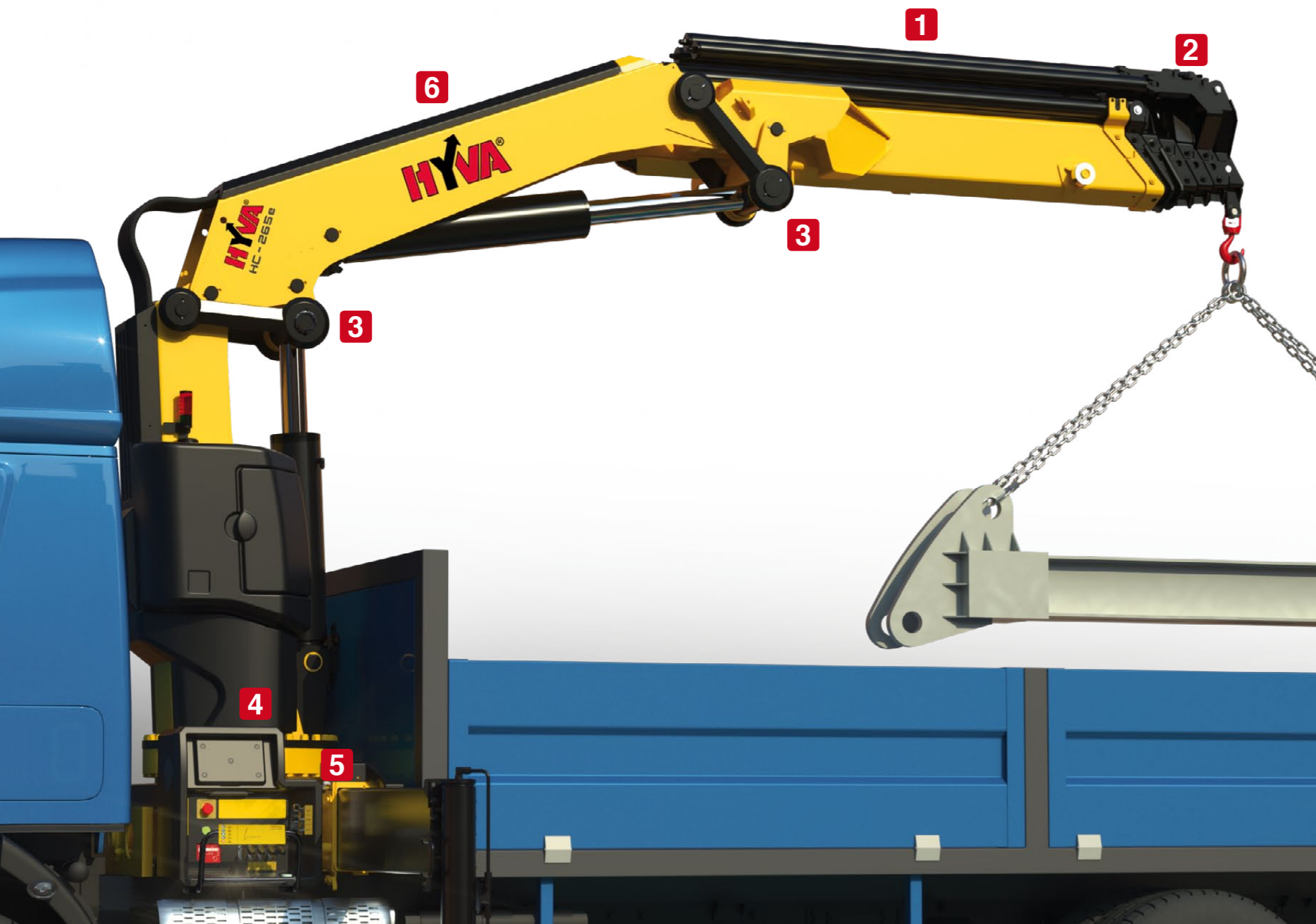


ARTICULATED CRANES WITH ULTIMATE PRECISION AND LIFTING CAPACITY

HC 265e 



RAISE YOUR GAME HYVA PERFORMANCE

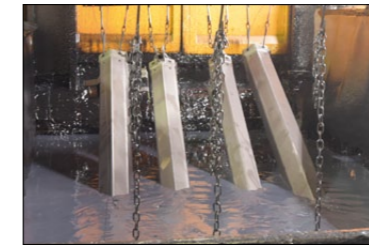


TOP SOLUTIONS

1 TPP

- **Top protection painting** - Top quality cathaphoresis treatment and paint process on all crane components ensures higher value retention and durability.
- Bolts and nuts protected by Geomet® treatment: 890% more resistance against corrosion.

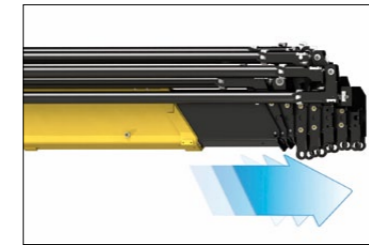
Top quality protection for harsh environment



2 EES

- **Extra Extension Speed** - The market is always demanding more speed along with the highest possible safety. EES is the answer. Through the use of a specially designed counterbalance valve, this system increases the extension speed without affecting the crane's safety.

Save time, precise work, increase efficiency



3 LAS

- **Liftrod Articulating System** - Joins forged double linkages on the column and second boom. Its design raises the mechanical advantage of the articulation to provide consistent force through all working angles.

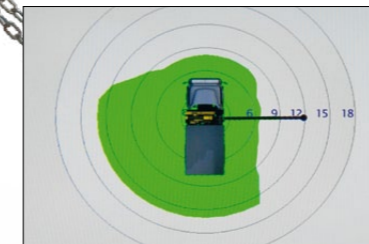
Precision and versatility for all working positions



4 DLD

- **Dynamic Load Diagram** - After the stabilization, operator can select the load to be lifted. Display shows the permitted crane outreach based on the stability and the load selected.

Crane lifting capacity always under control in all stabilizer positions



5 MT

- **Magic Touch System** - Allows the driver to open the crane from transport position to working position and back by pushing a single lever on the radio transmitter (or a button on the display).

Crane Automatic folding/unfolding



6 SDS

- **Smooth Descent System** - Uses a special counterbalance valve to reduce boom oscillation, the result for the user is incredible precision in unloading operations.

Control and precision of the movement



TECHNICAL SOLUTIONS TO RAISE RELIABILITY AND SAFETY

Safety first: always stable



- More than 40 stabilizer configurations to ensure safe positioning of the truck in all ground conditions.
- Automatic turning stabilizers are the smart solution. Equipped with a double effect cylinder, they provide effortless movement.

Endless performance: extreme flexibility



- Endless slewing allows the crane to be operated without restrictions. The complete access to the working area, eliminates the need to reposition the truck, optimizing precision, productivity and safety.

Electronics in mind: guaranteed in all conditions



- All electrical components have IP69K enclosures which offer complete protection against water jet and dust penetration providing higher durability and less down time.

Safety Performance Efficiency



H3XL

With a 3" TFT display and ergonomic keyboard, the crane operator can select optimum functional parameters. The system controls the stability with 3-steps beam outreach monitoring (cranes with hydraulically controlled stabilizers) or with 2-steps beam outreach monitoring (cranes with manually controlled stabilizers) and continuous slewing control.

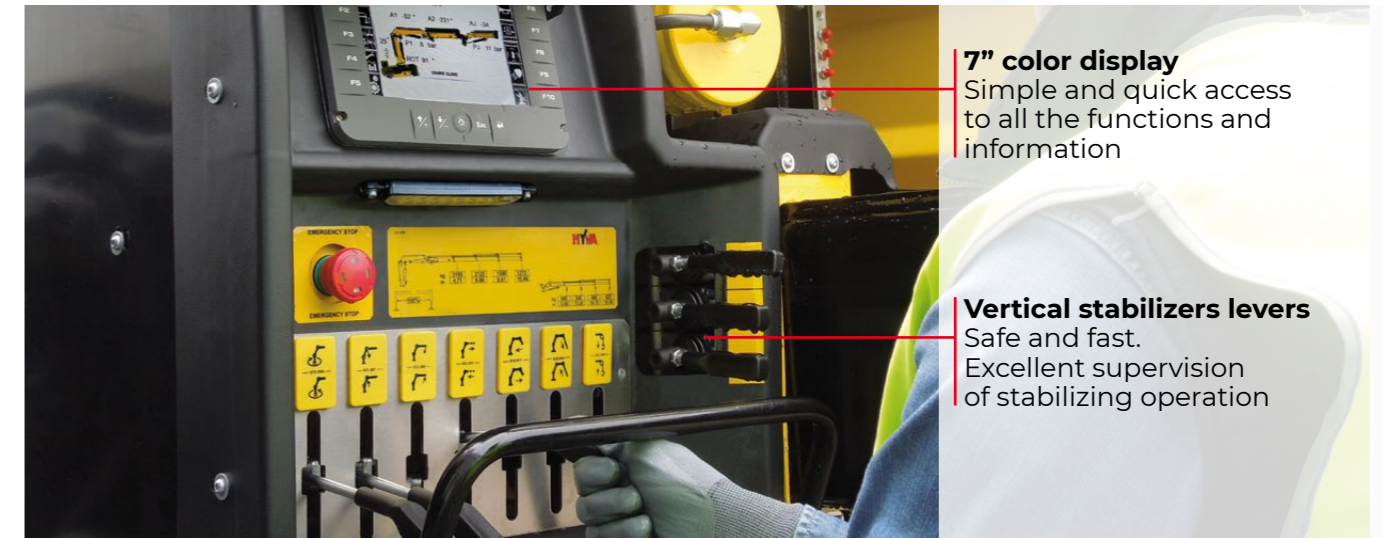


H4XL

A 7" colour display with integrated keyboard gives the operator a higher level of awareness of the crane operation and allows selection of the best parameters for effective use. The system detects the exact position of the beams and proportionally calculates the stability.

SMART AND USER-FRIENDLY CONTROLS

Control station distinguished by operator comfort and user-friendly interface derived from dedicated ergonomic and user preference studies



7" color display
Simple and quick access to all the functions and information

Vertical stabilizers levers
Safe and fast. Excellent supervision of stabilizing operation

OUR INNOVATIONS ARE CHANGING THE GAME

Solutions that are the result of smart engineering

DLD DYNAMIC LOAD DIAGRAM



This system, a first on truck-mounted articulated cranes, optimises stabilization, makes crane operation safer and more efficient and allows the driver to verify in advance the crane lifting capacity based on truck stability. A graphic display shows the outreach available for the load selected and the actual boom slewing position.

MT MAGIC TOUCH



This easy-to-use function improves driver attention, promotes safety, saves time and increases productivity. Once the truck is stabilized, a graphic display allows the driver to automatically unfold the crane to a working position and fold the crane from any position to transport position.

Wide range Radio selection (Standard)



Hetronic NOT CE



Hetronic CE Basic



Scanreco



Hetronic CE Graphic



distributor
Danfoss

A TEAM OF SKILLED AND CARING SPECIALISTS

Easy installation and smart calibration cranes, combined with a high level of service, make Hyva the best partner for your business - all over the world



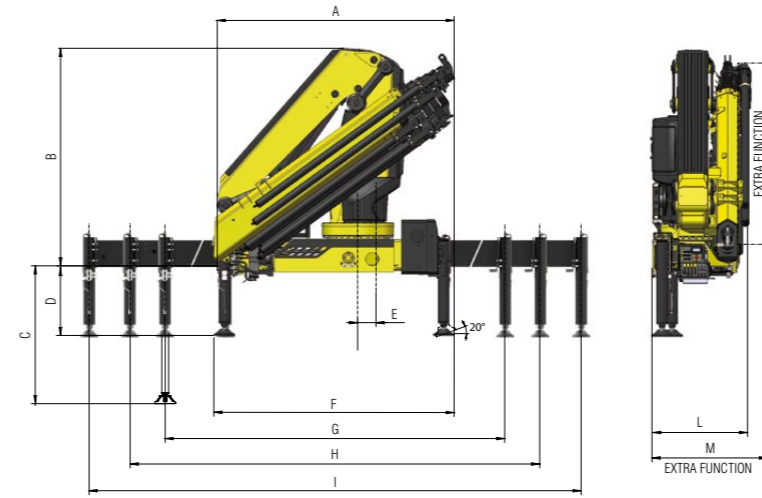
ONE CRANE, MANY APPLICATIONS

Thanks to the extensive range of accessories and attachments

Building	Construction	Energy	Environment	Gardening
Logistics	Maintenance	Mining	Oil&Gas	Rental

TECHNICAL INFORMATION HC265e X

Dimensions (in)



	E2	E3	E4	E5	E6	E7	E8	E4J3	E5J3	E6J2
A	100	100	100	100	100	100	100	102	104	100
B	92	92	92	92	92	92	92	106	106	106
C	54	54	54	54	54	54	54	54	54	54
D	27	27	27	27	27	27	27	25	25	25
E	10	10	10	10	10	10	10	10	10	10
F	100	100	100	100	100	100	100	100	100	100
G	192	192	192	192	192	192	192	192	192	192
H	217	217	217	217	217	217	217	217	217	217
I	293	293	293	293	293	293	293	293	293	293
L	39	39	39	39	39	42	42	44	44	44
M	44	44	44	44	44	-	-	-	-	-

Load diagrams

E2
 lb 54670 12780 8740 6650
 ft-in 3' 3" 14' 1" 20' 3" 26' 6"

E3
 lb 53590 12520 8490 6380 5070 4070 3150 2520
 ft-in 3' 3" 14' 1" 20' 3" 26' 6" 33' 2" 40' 1" 47' 5" 54' 8"

E4
 lb 52430 12030 8090 6030 4730 3910 3150 2520 2010
 ft-in 3' 3" 14' 4" 20' 6" 27' 4" 33' 5" 40' 1" 47' 5" 54' 8" 62' 0"

E5
 lb 51480 11600 7750 5720 4430 3620 3050 2520 2010 1580
 ft-in 3' 3" 14' 7" 20' 10" 27' 0" 33' 8" 40' 4" 47' 4" 54' 8" 62' 0" 69' 6"

E6
 lb 50640 11180 7420 5420 4140 3330 2780 2390 2010 1580
 ft-in 3' 3" 14' 10" 21' 1" 27' 4" 34' 0" 40' 8" 47' 8" 54' 8" 62' 0" 69' 6"

E7
 lb 49910 10820 7140 5170 3900 3100 2540 2160 1880 1580 1280
 ft-in 3' 3" 15' 1" 21' 4" 27' 7" 34' 3" 40' 11" 47' 11" 54' 11" 62' 0" 69' 6" 76' 5"

E8
 lb 49270 10480 6880 4940 3680 2890 2340 1950 1690 1480 1280
 ft-in 3' 3" 15' 5" 21' 8" 27' 11" 34' 7" 41' 2" 48' 2" 55' 2" 62' 3" 69' 6" 76' 5"

E4J3
 lb 1880 1640 1460 1310 1120 960
 ft-in 49' 11" 55' 6" 61' 3" 67' 0" 73' 2" 79' 5"

E5J3
 lb 1530 1380 1260 1160 1030 910
 ft-in 56' 8" 61' 9" 66' 10" 72' 0" 77' 5" 83' 3"

E6J2
 lb 1430 1320 1230 860
 ft-in 63' 7" 68' 1" 73' 0" 78' 1"

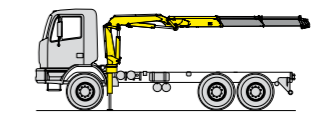
*) Theoretical lifting capacity

Standard features

Designed in accordance with EN12999

Design class: HC1-HD5

- Multifunctional radio remote control
- Sauer Danfoss PVG32
- P-LCS Proportional Lift Control System
- Flanged valves
- Manually extendable stabilizers
- Fixed stabilizer cylinders
- Swivel stabilizer foot
- Centralized greasing system
- EES Extra Extension Speed
- SDS Smooth Descent System
- LAS Liftrod Articulating System
- H3XL Crane control system (CE)



Recommended truck
G.V.W. lb 39690

Technical specifications - EN12999 - HC1-HD5

		E2	E3	E4	E5	E6	E7	E8	E4J3	E5J3	E6J2
Lifting Moment	lb-ft	179400	175800	172100	168500	165600	163500	161300	93300	86800	91100
Slewing Angle	°	endless	endless	endless	endless	endless	endless	endless	endless	endless	endless
Working pressure	psi	5000	5000	5000	5000	5000	5000	5000	5150	5070	5070
Oil tank capacity	gal	34,3	34,3	34,3	34,3	34,3	34,3	34,3	34,3	34,3	34,3
Max Oil flow	gal/min	21,1	21,1	21,1	21,1	21,1	21,1	21,1	21,1	21,1	21,1
Max lifting height	ft-in	45' 3"	52' 2"	59' 5"	66' 7"	73' 10"	81' 4"	79' 1"	83' 12"	84' 12"	84' 12"
Standard crane weight	lb	6050	6360	6670	6945	7175	7440	7640	8125	8025	7780

110 countries
+3,500 employees
20,000 customers
+30 subsidiaries
12 production facilities



Hyva is a leading provider of innovative and highly efficient transport solutions for commercial vehicles used in transport, construction, mining, materials handling and environmental service industries.

Founded in 1979 in the Netherlands, the company has a global presence with more than 30 wholly owned subsidiaries, extraordinary service coverage and 12 manufacturing facilities in Brazil, China, Europe and India.

For more information on Hyva, please visit www.hyva.com

or follow us on:



Hyva Corporation
864 Lively Blvd,
Wood Dale, IL 60191
USA
Telephone: +1 630 227 9020
Fax: +1 630 227 9029
salesusa@hyva.com
www.hyva.com
www.hyvacrane.com



Quality and
environmental certified

DEALER STAMP