

EDGE LINE
RAISE YOUR GAME



ARTICULATED CRANES WITH ULTIMATE PRECISION AND LIFTING CAPACITY

HC 661e 



RAISE YOUR GAME HYVA PERFORMANCE



TOP SOLUTIONS

1 TPP

- **Top protection painting** - Top quality cathaphoresis treatment and paint process on all crane components ensures higher value retention and durability.
- Bolts and nuts protected by Geomet® treatment: 890% more resistance against corrosion.

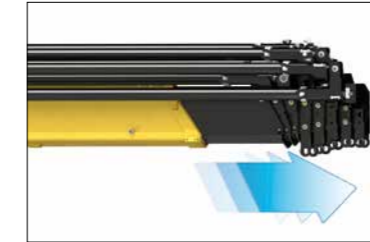
Top quality protection for harsh environment



2 EES

- **Extra Extension Speed** - The market is always demanding more speed along with the highest possible safety. EES is the answer. Through the use of a specially designed counterbalance valve, this system increases the extension speed without affecting the crane's safety.

Save time, precise work, increase efficiency



3 LAS

- **Liftrod Articulating System** - Joins forged double linkages on the column and second boom. Its design raises the mechanical advantage of the articulation to provide consistent force through all working angles.

Precision and versatility for all working positions



4 DLD

- **Dynamic Load Diagram** - After the stabilization, operator can select the load to be lifted. Display shows the permitted crane outreach based on the stability and the load selected.

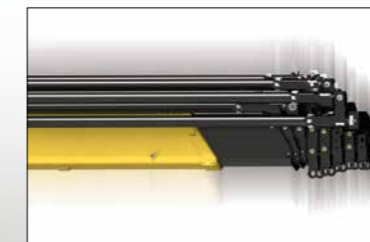
Crane lifting capacity always under control in all stabilizer positions



5 SDS

- **Smooth Descent System** - Uses a special counterbalance valve to reduce boom oscillation, the result for the user is incredible precision in unloading operations.

Control and precision of the movement





CRANE CONTROL SYSTEM

P
P-CLASS

- Proportional stabilizers control
- Proportional slewing control
- Truck side independent

HUMAN MACHINE INTERFACE

T
SMART TOP MONITOR 7"

Up to 16 languages available into the software. Top choice available for the range. Data statistics and crane management, all included into a 7" TFT monitor giving to the operator a higher level of awareness of the crane.

SMART AND USER-FRIENDLY CONTROLS

Control station distinguished by operator comfort and user-friendly interface derived from dedicated ergonomic and user preference studies



CRANE CONTROLS

L
LCD REMOTE CONTROL

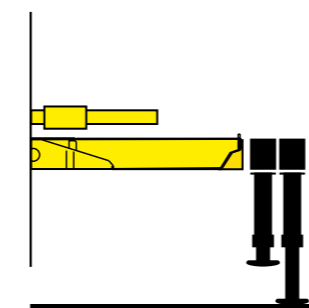
Each transmitter is equipped with 8 ergonomic proportional levers (6 for Scanreco mini) to control up to 8 functions of the crane. Using two hands, the operator can move 2-3-4 functions at once. This ensures more speed in loading or unloading operations with high precision.

G
GRAPHIC REMOTE CONTROL

Top visualization on 3" graphic display on the remote transmitter. Improved crane data visualization and crane control. Top level class of offer in the range.

TECHNICAL SOLUTIONS TO RAISE RELIABILITY AND SAFETY

New Stability Logic for maximum level of flexibility



- Be free to maximize the use of your crane for all stabilizers' positions.

Working flexibility: performance in any situation



- Endless slewing allows the crane to be operated without restrictions. The complete access to the working area, eliminates the need to reposition the truck, optimizing precision, productivity and safety.

Electronics mind: guaranteed in all conditions



- All electrical components have IP69K enclosures which offer complete protection against water jet and dust penetration providing higher durability and less down time.

Compact, light and strong architecture



- Uniquely designed to reduce the space occupancy behind the cabin made for increasing payload and truck floor area.

MOREOVER HC661e IS THE STRONGEST IN ITS RANGE

OUR INNOVATIONS ARE CHANGING THE GAME

Solutions that are the result of smart engineering

DLD DYNAMIC LOAD DIAGRAM

This system, a first on truck-mounted articulated cranes, optimises stabilisation and makes crane operation safer and more efficient, allows the driver to verify in advance the crane lifting capacity based on the truck stability. A display shows the outreach available for the load selected and the actual boom slewing position.

A TEAM OF SKILLED AND CARING SPECIALISTS

Easy installation and smart calibration cranes, combined with a high level of service, make Hyva the best partner for your business - all over the world



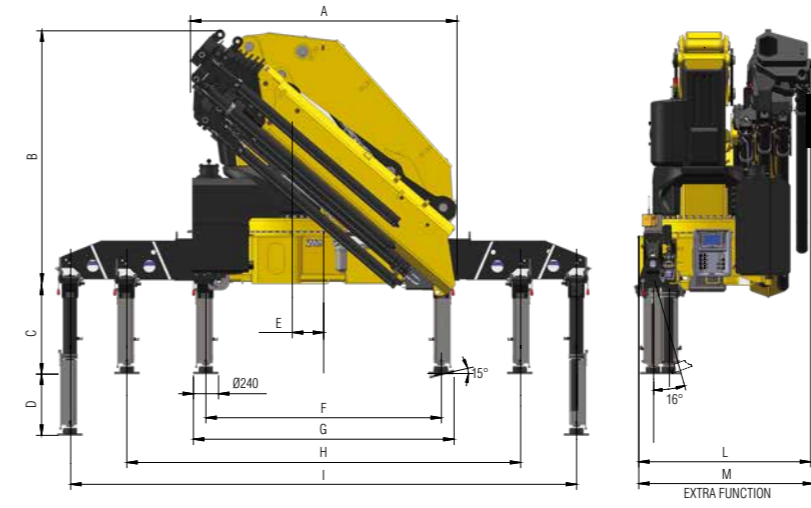
ONE CRANE, MANY APPLICATIONS

Thanks to the extensive range of accessories and attachments

Building	Construction	Energy	Environment	Gardening
Logistics	Maintenance	Mining	Oil&Gas	Rental

TECHNICAL INFORMATION HC661e X

Dimensions (in)



	E2	E4	E6	E8	E6J2002	E6J2004	E6J2006	E6J1206
A	100	100	100	101	101	101	101	101
B	96	96	96	96	108	108	108	110
C	34	34	34	34	34	34	34	34
D	24	24	24	24	24	24	24	24
E	12	12	12	12	12	12	12	12
F	89	89	89	89	89	89	89	89
G	99	99	99	99	99	99	99	99
H	263	263	263	263	263	263	263	263
I	342	342	342	342	342	342	342	342
L	59	59	59	65	66	66	66	66
M	63	63	63	67	-	-	-	-

Load diagrams

E2
lb 139510* 31460 22420 17440
ft-in 3' 3" 14' 3" 20' 2" 26' 3"

E4
lb 132740* 29760 21030 16150 12920 10800 7970 6900 5210 4650
ft-in 3' 3" 14' 8" 20' 6" 26' 5" 32' 10" 39' 3" 46' 2" 53' 1" 60' 9" 67' 11"

E6
lb 126920* 28330 19640 14820 11610 9510 7970 6900 5210 4650 3750 2980
ft-in 3' 3" 14' 8" 20' 7" 26' 7" 33' 0" 39' 4" 46' 2" 53' 1" 60' 9" 67' 11" 75' 0" 82' 0"

E8
lb 124050* 26570 18360 13730 10600 8550 7040 5990 5210 4650 3750 2980
ft-in 3' 3" 15' 4" 21' 3" 27' 3" 33' 8" 40' 0" 46' 11" 53' 10" 60' 9" 67' 11" 75' 0" 82' 0"

E6 J2002
lb 3350 3040 2800 1900 1740
ft-in 64"0" 69"3" 74"6" 80"1" 85"8"

E6 J2004
lb 2930 2600 2380 2180 2010 1610 1500
ft-in 64"4" 69"7" 74"10" 80"1" 85"8" 91"10" 97"9"

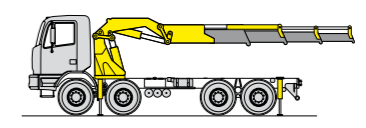
E6 J2006
lb 2650 2360 2120 1900 1740 1610 1500 1150
ft-in 64"6" 69"11" 75"2" 80"5" 85"11" 91"10" 97"9" 101"8"

E6 J1206
lb 3280 2910 2650 2430 2250 2070 1940 1430
ft-in 64"6" 69"11" 75"2" 80"5" 85"11" 91"10" 97"9" 101"8"

*) Theoretical lifting capacity

Standard features

- Designed in accordance with:**
EN12999:2020 + EN13849
- Design class: HC1-HDS**
- Multifunction radio remote control
 - Sauer Danfoss PVG32
 - On site auxiliary manual controls (on column)
 - P-LCS Proportional Lift Control System
 - EES Extra Extension Speed
 - SDS Smooth Descendent System
 - LAS Liftrod Articulating System
 - 7" color display
 - High pressure oil filter
 - Flanged valves
 - Load sensing pump predisposition
 - Stabilizers control valve
 - Hydraulically extendable stabilizers
 - Fixed stabilizer cylinders
 - Swivel stabilizer foot
 - Stability Control System (CE)
 - Visual warning device for closed stabilizers (CE)
 - P Class - Crane Control System (CE)



Recommended truck
G.V.W. lb 92610

Technical specifications

		E2	E4	E6	E8	E6J2002	E6J2004	E6J2006	E6J1206
Lifting Moment	lb-ft	457100	435400	415900	406500	214100	188100	170000	211200
Slewing Angle	°	endless	endless	endless	endless	endless	endless	endless	endless
Working pressure	psi	5290	5290	5290	5290	-	-	-	-
Oil tank capacity	gal	66,0/79,2	66,0/79,2	66,0/79,2	66,0/79,2	66,0/79,2	66,0/79,2	66,0/79,2	66,0/79,2
Max Oil flow	gal/min	26,4	26,4	26,4	26,4	26,4	26,4	26,4	26,4
Max lifting height	ft-in	39' 1"	52' 2"	66' 7"	81' 0"	87' 3"	98' 9"	110' 11"	110' 11"
Standard crane weight	lb	11850	13095	14255	15155	16690	17165	17540	16875

110 countries
+3,500 employees
20,000 customers
+30 subsidiaries
14 production facilities



Hyva is a leading provider of innovative and highly efficient transport solutions for commercial vehicles used in transport, construction, mining, materials handling and environmental service industries.

Founded in 1979 in the Netherlands, the company has a global presence with more than 30 wholly owned subsidiaries, extraordinary service coverage and 14 manufacturing facilities in Brazil, China, Europe and India.

For more information on Hyva, please visit www.hyva.com

or follow us on:



Hyva Corporation
300 King Street,
Elk Grove Village, IL 60007
USA
Telephone: +1 630 227 9020
Fax: +1 630 227 9029
salesusa@hyva.com
www.hyva.com
www.hyvacrane.com



Quality and
environmental certified

DEALER STAMP