

KNUCKLE BOOM CRANES

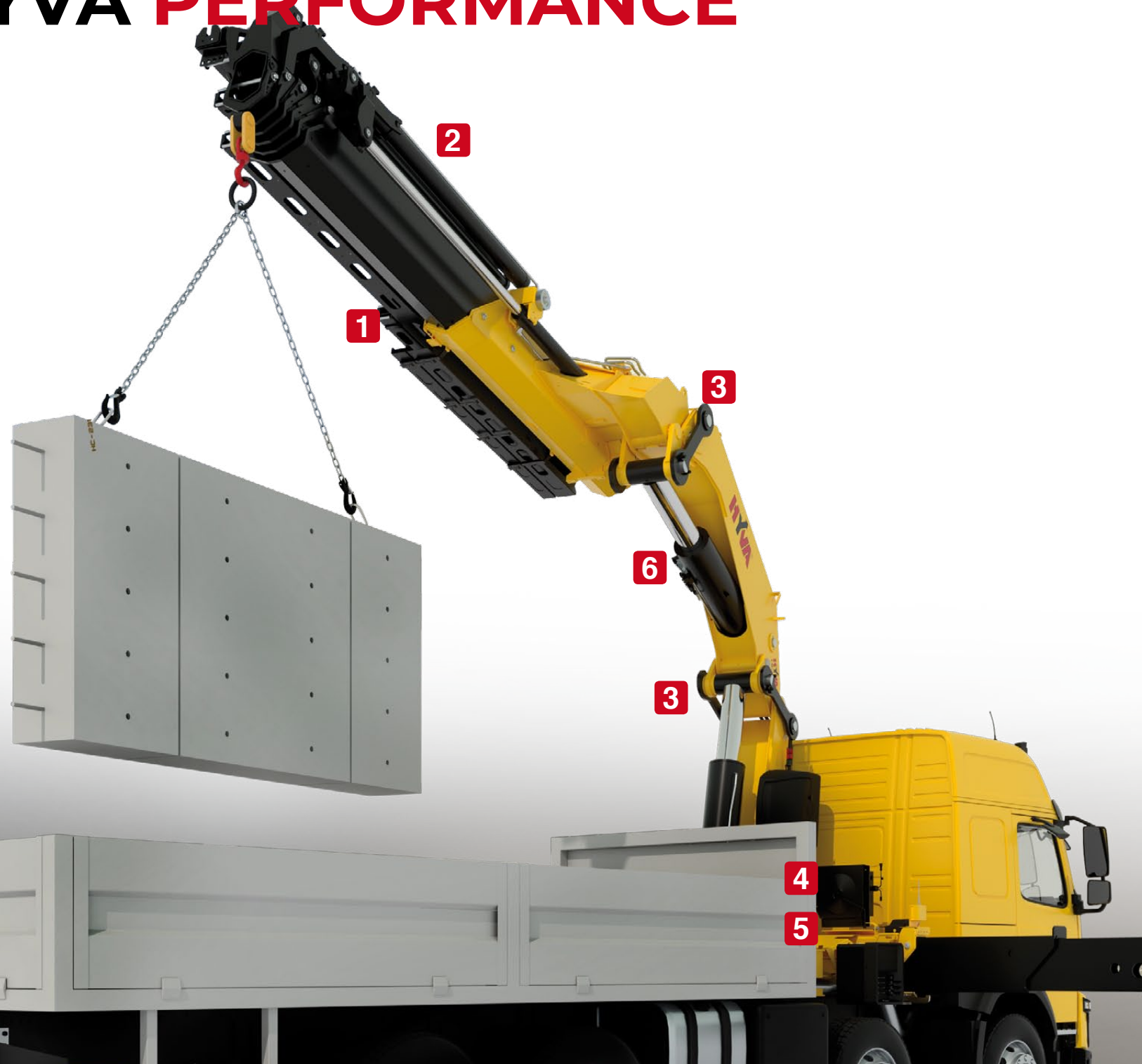
EDGE^{LINE} RAISE YOUR GAME

ARTICULATED CRANES WITH ULTIMATE PRECISION AND
LIFTING CAPACITY

HC 601e 



RAISE YOUR GAME HYVA PERFORMANCE



TOP SOLUTIONS

1 TPP

- **Top protection painting** - Top quality cathaphoresis treatment and paint process on all crane components ensures higher value retention and durability.
- Bolts and nuts protected by Geomet® treatment: 890% more resistance against corrosion.

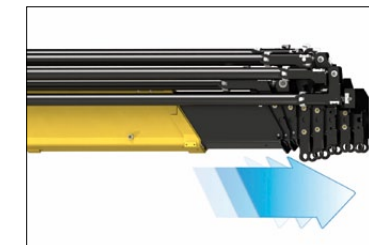
Top quality protection for harsh environment



2 EES

- **Extra Extension Speed** - The market is always demanding more speed along with the highest possible safety. EES is the answer. Through the use of a specially designed counterbalance valve, this system increases the extension speed without affecting the crane's safety.

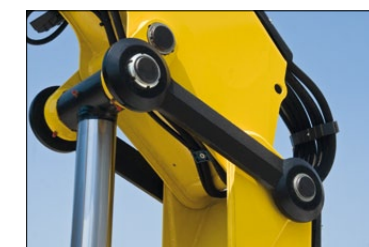
Save time, precise work, increase efficiency



3 LAS

- **Liftrud Articulating System** - Joins forged double linkages on the column and second boom. Its design raises the mechanical advantage of the articulation to provide consistent force through all working angles.

Precision and versatility for all working positions



4 DLD

- **Dynamic Load Diagram** - After the stabilization, operator can select the load to be lifted. Display shows the permitted crane outreach based on the stability and the load selected.

Crane lifting capacity always under control in all stabilizer positions



5 MT

- **Magic Touch System** - Allows the driver to open the crane from transport position to working position and back by pushing a single lever on the radio transmitter (or a button on the display).

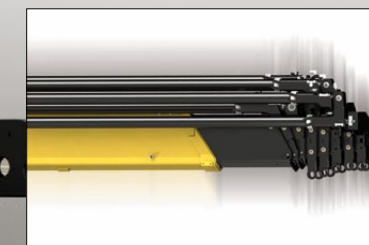
Crane Automatic folding/unfolding



6 SDS

- **Smooth Descent System** - Uses a special counterbalance valve to reduce boom oscillation, the result for the user is incredible precision in unloading operations.

Control and precision of the movement



TECHNICAL SOLUTIONS TO **RAISE RELIABILITY AND SAFETY**

Safety first: always stable



- More than 40 stabilizer configurations to ensure safe positioning of the truck in all ground conditions.
- Automatic turning stabilizers are the smart solution. Equipped with a double effect cylinder, they provide effortless movement.

Endless performance: extreme flexibility



- Endless slewing allows the crane to be operated without restrictions. The complete access to the working area, eliminates the need to reposition the truck, optimizing precision, productivity and safety.

Electronics in mind: guaranteed in all conditions



- All electrical components have IP69K enclosures which offer complete protection against water jet and dust penetration providing higher durability and less down time.

Safety Performance Efficiency



H4XL

A 7" colour display with integrated keyboard gives the operator a higher level of awareness of the crane operation and allows selection of the best parameters for effective use.

The system detects the exact position of the beams and proportionally calculates the stability.

Compact and light architecture



- Uniquely designed to reduce the space occupancy behind the cabin made for increasing payload and truck floor area.

OUR INNOVATIONS ARE **CHANGING THE GAME**

Solutions that are the result of smart engineering

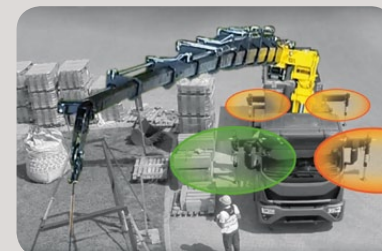


ALS AUTO LEVELLING SYSTEM



Keep truck horizontal for best crane's performance. This system automatically keeps the truck frame in horizontal position, enabling the crane to perform always at its best.

OAD OPERATOR AUTO DETECTION



Detection and automatic activation of the operator's closest stabilizer. The Proximity Detection Module installed on each stabilizer allows to automatically activate the operator's closest stabilizer, avoiding potential human error.

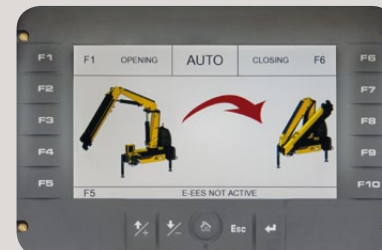
DLD DYNAMIC LOAD DIAGRAM



This system, a first on truck-mounted articulated cranes, optimises stabilization, makes crane operation safer and more efficient and allows the driver to verify in advance the crane lifting capacity based on truck stability.

A graphic display shows the outreach available for the load selected and the actual boom slewing position.

MT MAGIC TOUCH



This easy-to-use function improves driver attention, promotes safety, saves time and increases productivity.

Once the truck is stabilized, a graphic display allows the driver to automatically unfold the crane to a working position and fold the crane from any position to transport position.

Wide range Radio selection (Standard)



Hetronic CE Basic



Scanreco



Hetronic CE Graphic



distributor

Danfoss

A TEAM OF SKILLED AND CARING SPECIALISTS

Easy installation and smart calibration cranes, combined with a high level of service, make Hyva the best partner for your business - all over the world



ONE CRANE, MANY APPLICATIONS

Thanks to the extensive range of accessories and attachments



Building



Construction



Energy



Environment



Gardening



Logistics



Maintenance



Mining



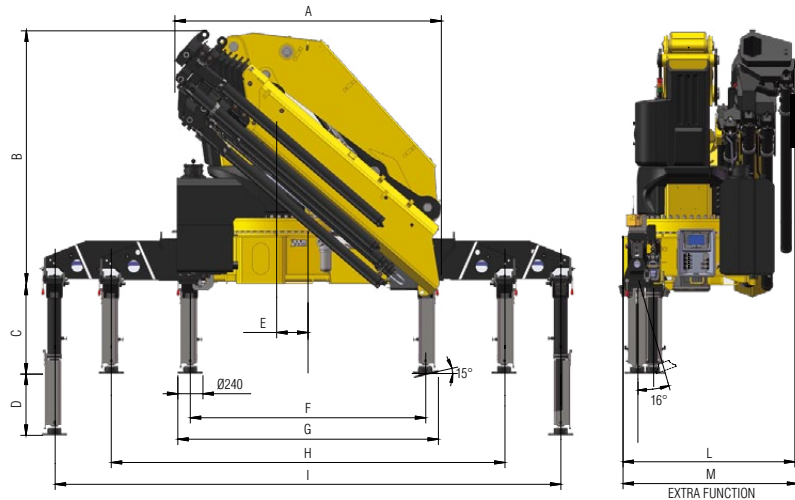
Oil&Gas



Rental

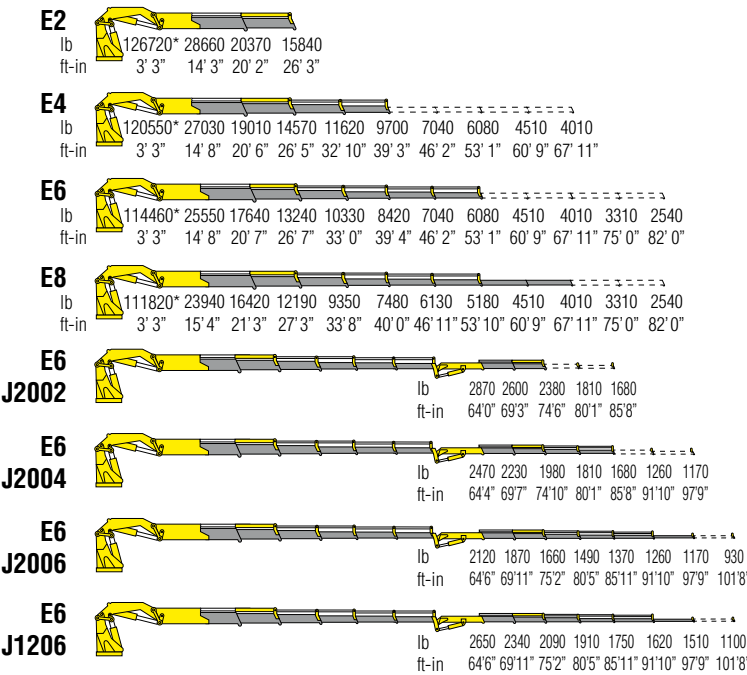
TECHNICAL INFORMATION HC601e X

Dimensions (in)



	E2	E4	E6	E8	E6J2002	E6J2004	E6J2006	E6J1206
A	100	100	100	101	101	101	101	101
B	96	96	96	96	108	108	108	110
C	34	34	34	34	34	34	34	34
D	24	24	24	24	24	24	24	24
E	12	12	12	12	12	12	12	12
F	89	89	89	89	89	89	89	89
G	99	99	99	99	99	99	99	99
H	263	263	263	263	263	263	263	263
I	342	342	342	342	342	342	342	342
L	59	59	59	65	66	66	66	66
M	63	63	63	67	-	-	-	-

Load diagrams

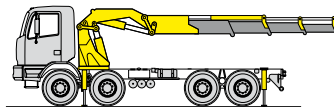


Standard features

Designed in accordance with EN12999

Design class: HC1-HD4

- Multifunction radio remote control
- Sauer Danfoss PVG32
- On site auxiliary manual controls (on column)
- EES Extra Extension Speed
- SDS Smooth Descendent System
- LAS Liftrod Articulating System
- 7" color display
- High pressure oil filter
- Flanged valves
- Load sensing pump predisposition
- Stabilizers control valve
- Hydraulically extendable stabilizers
- Fixed stabilizer cylinders
- Swivel stabilizer foot
- Stability Control System (CE)
- Visual warning device for closed stabilizers (CE)
- H4XL crane control system (CE) + TOP



Recommended truck
G.V.W. lb 92610

Technical specifications - EN12999 - HC1- HD4

		E2	E4	E6	E8	E6J2002	E6J2004	E6J2006	E6J1206
Lifting Moment	lb-ft	415900	395600	375400	366700	183000	158400	136000	170000
Slewing Angle	°	endless	endless	endless	endless	endless	endless	endless	endless
Working pressure	psi	4860	4860	4860	4860	-	-	-	-
Oil tank capacity	gal	66,0/79,2	66,0/79,2	66,0/79,2	66,0/79,2	66,0/79,2	66,0/79,2	66,0/79,2	66,0/79,2
Max Oil flow	gal/min	26,4	26,4	26,4	26,4	26,4	26,4	26,4	26,4
Max lifting height	ft-in	39' 1"	52' 2"	66' 7"	81' 0"	87' 3"	98' 9"	110' 11"	110' 11"
Standard crane weight	lb	11850	13095	14255	15155	16690	17165	17540	16875

110 countries
+3,500 employees
20,000 customers
+30 subsidiaries
12 production facilities



Hyva is a leading provider of innovative and highly efficient transport solutions for commercial vehicles used in transport, construction, mining, materials handling and environmental service industries.

Founded in 1979 in the Netherlands, the company has a global presence with more than 30 wholly owned subsidiaries, extraordinary service coverage and 12 manufacturing facilities in Brazil, China, Europe and India.

For more information on Hyva, please visit www.hyva.com

or follow us on:



Hyva Corporation
864 Lively Blvd,
Wood Dale, IL 60191
USA
Telephone: +1 630 227 9020
Fax: +1 630 227 9029
salesusa@hyva.com
www.hyva.com
www.hyvacrane.com



**Quality and
environmental certified**

DEALER STAMP

Data, descriptions, and illustrations pertain only and uniquely to models sold at the time of printing of this brochure. After the date of printing, this information is purely indicative and not binding upon HYVA. Future modifications are solely at the discretion of HYVA and are always in compliance with applicable and pertinent safety standards. To obtain updated data, descriptions, and illustrations, contact the manufacturer or your reseller. Cranes manufactured and/or marketed by HYVA. HYVA is not responsible for the special applications depicted. Crane applications and accessories described herein are only examples. Some applications and equipment shown may not be approved for use in CE countries or other areas. It is the installer's responsibility to ensure that the crane is applied correctly, and that its application, installation, and accessories maintain safety and comply with all local laws.