

EDGE LINE
RAISE YOUR GAME



USER-FRIENDLY ARTICULATED CRANES
HB Range MID-SIZE



RAISE YOUR GAME HYVA PERFORMANCE



TOP SOLUTIONS

1 TPP

- **Top protection painting** - Top quality treatment and paint on all crane components for higher value retention and durability by the use of cataphoresis painting process.
- Bolts and nuts protected by Geomet® treatment: 890% more resistance against corrosion.

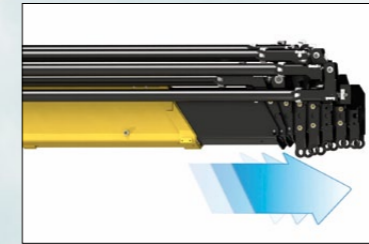
Top quality protection for harsh environment



2 EES

- **Extra Extension Speed** - The market is always demanding more speed, but also the highest possible safety. EES is our answer to this, through the use of a specially designed counterbalance valve: this system increases the extension speed without affecting the crane safety.

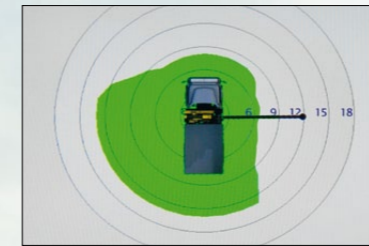
Save time, precise work, increase efficiency



3 DLD

- **Dynamic Load Diagram** - After the stabilization, operator can select the load to be lifted. Display shows the permitted crane outreach based on the stability and the load selected.

Crane lifting capacity always under control in all stabilizer positions



4 MT

- **Magic Touch** - System allows the driver to open the crane from folded position to working position and back to transporting position by pushing a single lever on radio transmitter (or a button on the display).

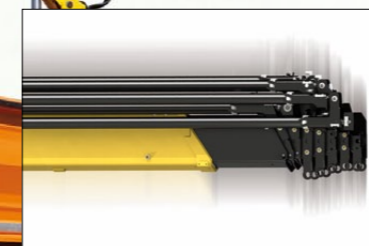
Crane Automatic folding/unfolding



5 SDS

- **Smooth Descent System** - uses a special counterbalance valve to reduce boom oscillation. The result for the user is an incredible precision in unloading operations.

Control and precision of the movement



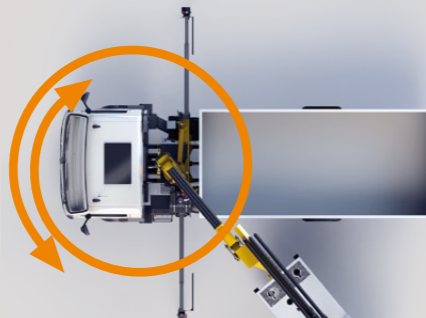
TECHNICAL SOLUTIONS TO RAISE RELIABILITY AND SAFETY

Safety first: always stable



- More than 40 stabilizer configurations to ensure safe positioning of the truck in all ground conditions.
- Assisted tiltable stabilizer is the smart solution equipped with gas spring, to provide effortless movement.

425° Slewing Angle



- The widest slewing angle for medium sized cranes.
- Top efficiency and easy to use.

Electronics mind: guaranteed in all conditions



- All electrical components have IP69K enclosures which offer complete protection against water jet and dust penetration providing higher durability and less down time.

Safety Performance Efficiency



H3XL

With a 3" TFT display and ergonomic keyboards, the operator can supervise the crane working and select the best parameters for effective use. The system controls the stability with 2-step beam outreach monitoring and continuous slewing control.

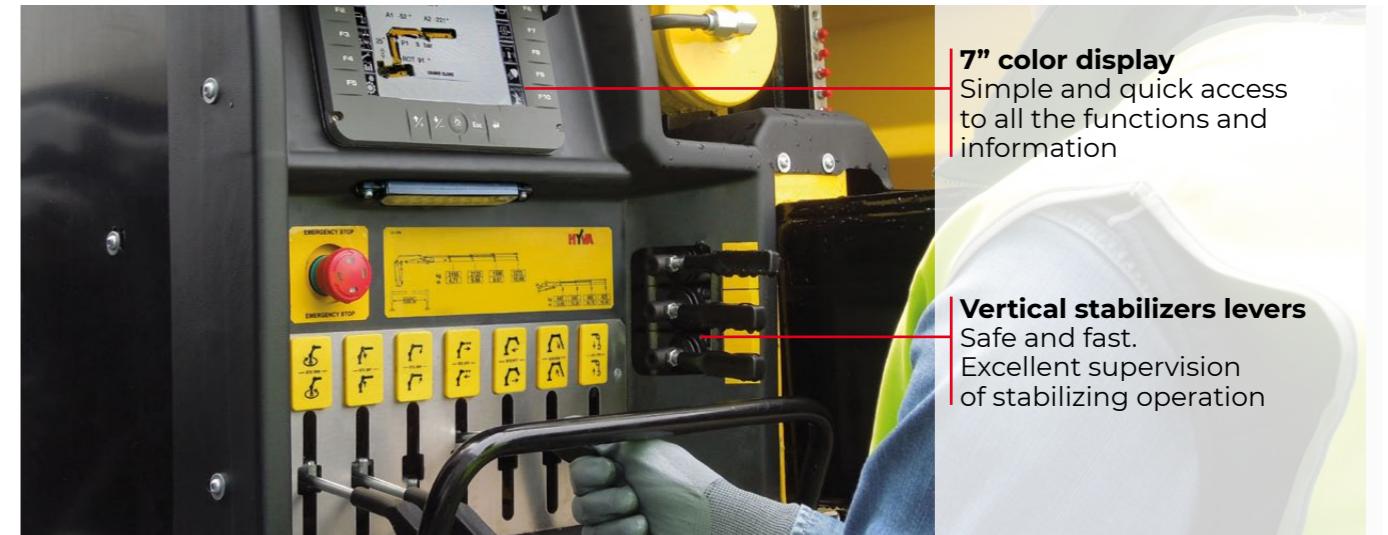


H4XL

A 7" colour display with integrated keyboard gives the operator a higher level of awareness of the crane operation and allows selection of the best parameters for effective use. The system detects the exact position of the beams and proportionally calculates the stability.

SMART AND USER-FRIENDLY CONTROLS

Control station distinguished by operator comfort and user-friendly interface derived from dedicated ergonomic and user preference studies



7" color display
Simple and quick access to all the functions and information

Vertical stabilizers levers
Safe and fast. Excellent supervision of stabilizing operation

OUR INNOVATIONS ARE CHANGING THE GAME

Solutions that are the result of smart engineering

DLD DYNAMIC LOAD DIAGRAM



This system, a first on truck-mounted articulated cranes, optimises stabilisation and makes crane operation safer and more efficient, allows the driver to verify in advance the crane lifting capacity based on the truck stability. A display shows the outreach available for the load selected and the actual boom slewing position.

MT MAGIC TOUCH



This easy-to-use function improves driver attention, promotes safe operation, saves time and can increase productivity. A graphic display allows the driver, after truck stabilisation, to automatically fold the crane from any position to transport position and unfold to working position when required.

Wide range Radio selection



Hetronic NOT CE



Hetronic CE Basic



Scanreco



Hetronic CE Graphic



distributor
Danfoss

A TEAM OF SKILLED AND CARING SPECIALISTS

Easy installation and smart calibration cranes combined with high level of service, makes Hyva the best partner for your business, all over the world



ONE CRANE, MANY APPLICATIONS

Thanks to the extensive range of accessories and attachments



Building



Construction



Energy



Environment



Gardening



Logistics



Maintenance



Mining



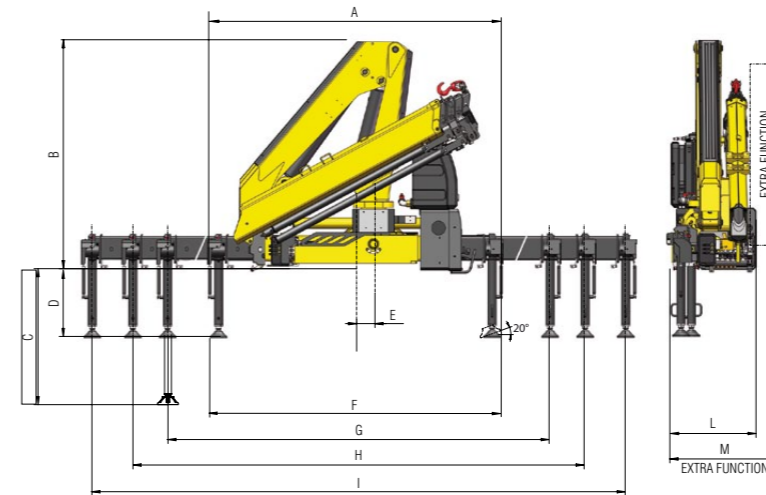
Oil&Gas



Rental

TECHNICAL INFORMATION HB90 - HB112

Dimensions (in)



	E1		E2		E3		E4	
	90	112	90	112	90	112	90	112
A	91	91	91	91	91	91	91	91
B	82	83	82	83	82	83	82	83
C	47	53	47	53	47	53	47	53
D	24	26	24	26	24	26	24	26
E	7		7		7		7	
F	90	91	90	91	90	91	90	91
G	130		130		130		130	
H	189	190	189	190	189	190	189	190
I	227		227		227		227	
L	32		32		32		32	
M	34		34		34		34	

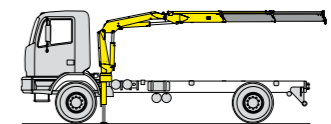
Load diagrams

E1	HB90							HB112							
lb	19180	4700	3330					23320	5690	4010					
ft-in	3' 3"	13' 5"	18' 11"					3' 3"	13' 5"	19' 0"					
E2	HB90							HB112							
lb	18170	4450	3120	2410	1570	1320		22420	5460	3780	2910	1910	1590		
ft-in	3' 3"	13' 5"	18' 11"	24' 5"	30' 10"	36' 9"		3' 3"	13' 6"	19' 0"	24' 6"	30' 9"	36' 10"		
E3	HB90							HB112							
lb	17660	4230	3780	1980	1740	1320	1050	21050	5030	3450	2610	2080	1590	1270	
ft-in	3' 3"	13' 6"	19' 0"	24' 9"	30' 8"	36' 9"	43' 4"	3' 3"	13' 9"	19' 3"	24' 10"	30' 9"	36' 10"	43' 6"	
E4	HB90							HB112							
lb	17280	4080	2710	2030	1570	1320	1050	20440	4780	3250	2430	1910	1580	1270	
ft-in	3' 3"	13' 11"	19' 5"	25' 0"	30' 10"	36' 9"	43' 4"	3' 3"	14' 0"	19' 6"	25' 1"	31' 0"	36' 11"	43' 6"	

Standard features

Designed in accordance with EN12999
Design class: HC1-HD4

- Cross controls
- Flanged valves
- Oil tank
- Manually extendable stabilizers
- Fixed stabilizer cylinders
- Swivel stabilizer foot
- Centralized greasing system
- EES Extra Extension Speed
- SDS Smooth Descent System
- H3XL Crane control system (CE)



Recommended truck:
HB90
G.V.W. lb 17640
HB112
G.V.W. lb 2250

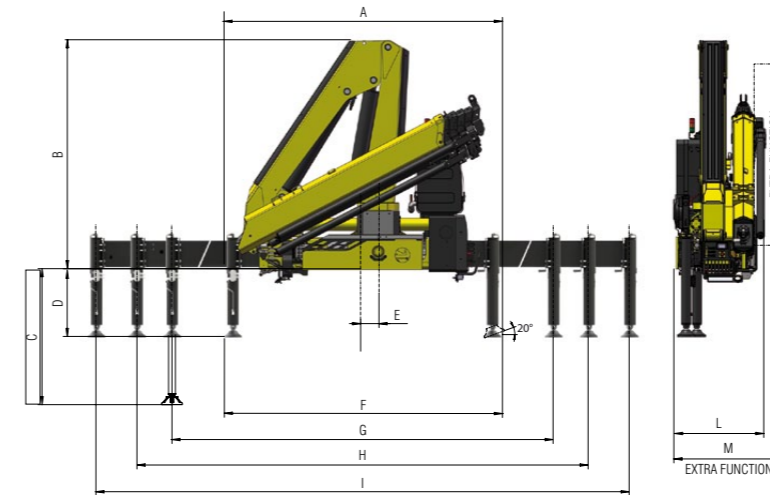
Technical specifications - EN12999 - HC1-HD4

HB		E1		E2		E3		E4	
		90	112	90	112	90	112	90	112
Lifting Moment	lb-ft	62900	75900	59300	75900	57900	68700	56400	67300
Slewing Angle	°	425		425		425		425	
Working pressure	psi	4490		4490		4490		4490	
Oil tank capacity	gal	19,8		19,8		19,8		19,8	
Max Oil flow	gal/min	10,6		10,6		10,6		10,6	
Max lifting height	ft-in	29'1"	29,9"	35' 1"		41' 4"		47' 3"	
Standard crane weight	lb	2515	2680	2690	2910	2865	3130	3020	3330



TECHNICAL INFORMATION HB130 - HB160

Dimensions (in)



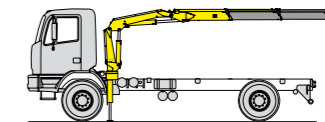
	E1		E2		E3		E4		E5	
	130	160	130	160	130	160	130	160	130	160
A	98	99	98	99	98	99	98	99	98	99
B	91		91		91		91		91	
C	55	54	55	54	55	54	55	54	55	54
D	25		25		25		25		25	
E	7		7		7		7		7	
F	97	98	97	98	97	98	97	98	97	98
G	166	167	166	167	166	167	166	167	166	167
H	213	214	213	214	213	214	213	214	213	214
I	260	261	260	261	260	261	260	261	260	261
L	33		33		33		33		33	
M	37	38	37	38	37	38	37	38	37	38

Load diagrams

E1	HB130								HB160
	lb	6040	4280						
	27430	6040	4280						
	ft-in	3' 3"	14' 11"	20' 10"					
E2	HB130								HB160
	lb	5750	3990	3080	2230	1660	1230		
	26120	5750	3990	3080	2230	1660	1230		
	ft-in	3' 3"	14' 11"	20' 10"	26' 8"	34' 0"	40' 6"	47' 3"	
E3	HB130								HB160
	lb	5460	3730	2820	2240	1660	1230	900	
	25200	5460	3730	2820	2240	1660	1230	900	
	ft-in	3' 3"	15' 2"	21' 1"	27' 0"	33' 6"	40' 6"	47' 3"	54' 1"
E4	HB130								HB160
	lb	4950	3280	2390	1820	1470	1230	900	
	23660	4950	3280	2390	1820	1470	1230	900	
	ft-in	3' 3"	15' 8"	21' 7"	27' 6"	34' 0"	40' 6"	47' 3"	54' 1"
E5	HB130								HB160
	lb	4950	3280	2390	1820	1470	1230	900	
	23660	4950	3280	2390	1820	1470	1230	900	
	ft-in	3' 3"	15' 8"	21' 7"	27' 6"	34' 0"	40' 6"	47' 3"	54' 1"
E5	HB130								HB160
	lb	6340	4240	3110	2380	1930	1630	1180	
	30290	6340	4240	3110	2380	1930	1630	1180	
	ft-in	3' 3"	15' 8"	21' 7"	27' 6"	34' 0"	40' 6"	47' 3"	54' 1"

Standard features

- Designed in accordance with EN12999**
Design class: HC1-HD4
- Cross controls
 - Load limit device
 - Flanged valves
 - Oil tank
 - Manually extendable stabilizers
 - Internal stabilizers pipes
 - Fixed stabilizer cylinders
 - Swivel stabilizer foot
 - Centralized greasing system
 - EES Extra Extension Speed
 - SDS Smooth Descent System
 - H3XL Crane control system (CE)



Recommended truck:
HB130
G.V.W. lb 26460
HB160
G.V.W. lb 33075

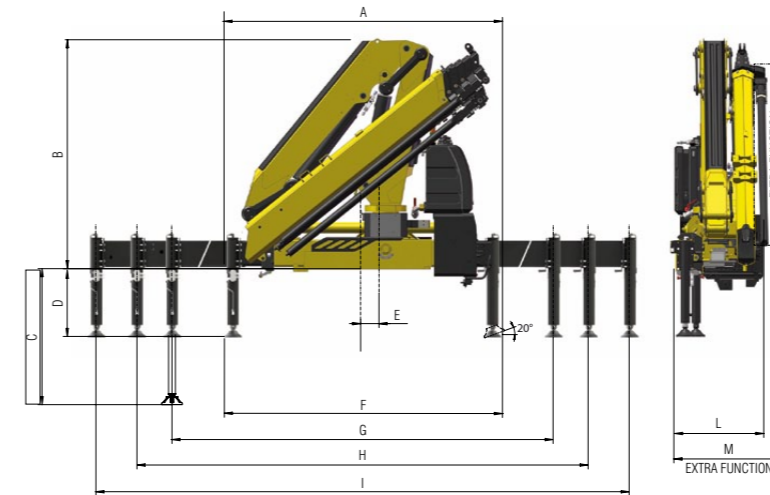
Technical specifications - EN12999 - HC1-HD4

HB		E1		E2		E3		E4		E5	
		130	160	130	160	130	160	130	160	130	160
Lifting Moment	lb-ft	89700	114300	85300	108500	82500	105600	80300	102700	77400	99100
Slewing Angle	°	425		425		425		425		425	
Working pressure	psi	4130	4060	4130	4060	4130	4060	4130	4060	4130	4060
Oil tank capacity	gal	34,3		34,3		34,3		34,3		34,3	
Max Oil flow	gal/min	7,9	10,6	7,9	10,6	7,9	10,6	7,9	10,6	7,9	10,6
Max lifting height	ft-in	32' 6"		38' 5"		44' 11"		51' 6"		58' 5"	
Standard crane weight	lb	3405	3915	3670	4210	3925	4465	4125	4695	4310	4895



TECHNICAL INFORMATION HB210 - HB240

Dimensions (in)



	E2	E3	E4	E5
A	99	99	99	99
B	91	91	91	91
C	54	54	54	54
D	25	25	25	25
E	6	6	6	6
F	100	100	100	100
G	192	192	192	192
H	217	217	217	217
I	293	293	293	293
L	37	37	37	37
M	42	42	42	42

Load diagrams

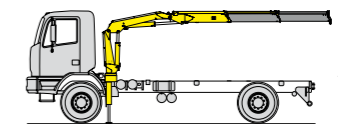
Model	Capacity (lb)	Capacity (ft-in)	Capacity (lb)	Capacity (ft-in)	Capacity (lb)	Capacity (ft-in)	Capacity (lb)	Capacity (ft-in)	Capacity (lb)	Capacity (ft-in)										
E2	41010	3' 3"	9710	14' 1"	6610	20' 4"	5030	26' 7"	HB210											
	50040	3' 3"	11640	14' 1"	7960	20' 4"	6060	26' 7"	HB240											
E3	40960	3' 3"	9520	14' 1"	6550	20' 4"	4920	26' 7"	3750	33' 3"	2820	40' 2"	2160	47' 5"	1700	54' 5"	HB210			
	48220	3' 3"	11210	14' 1"	7550	20' 4"	5670	26' 7"	4490	33' 3"	3370	40' 2"	2580	47' 5"	2020	54' 5"	HB240			
E4	39680	3' 3"	9040	14' 5"	6240	20' 8"	4670	26' 10"	3580	33' 6"	2820	40' 2"	2160	47' 5"	1700	54' 1"	1390	61' 4"	HB210	
	46650	3' 3"	10630	14' 5"	7090	20' 8"	5250	26' 10"	4140	33' 6"	3370	40' 2"	2580	47' 5"	2020	54' 1"	1620	61' 4"	HB240	
E5	38820	3' 3"	8690	14' 8"	5700	20' 11"	4140	27' 2"	3170	33' 10"	2570	40' 5"	2160	46' 5"	1700	54' 5"	1390	61' 4"	HB210	
	45170	3' 3"	10110	14' 8"	6690	20' 11"	4890	27' 2"	3770	33' 10"	3060	40' 5"	2580	47' 5"	2020	54' 5"	1620	61' 4"	HB240	

Standard features

Designed in accordance with EN12999

Design class: HC1-HD4

- Cross controls
- Load limit device
- Flanged valves
- Oil tank
- Manually extendable stabilizers
- Internal stabilizers pipes
- Fixed stabilizer cylinders
- Swivel stabilizer foot
- Centralized greasing system
- EES Extra Extension Speed
- SDS Smooth Descent System
- H3XL Crane control system (CE)



Recommended truck:
HB210
 G.V.W. lb 37485
HB240
 G.V.W. lb 41895

Technical specifications - EN12999 - HC1-HD4

HB		E2		E3		E4		E5	
		210	240	210	240	210	240	210	240
Lifting Moment	lb-ft	136700	164200	134500	157700	130200	152600	127300	147600
Slewing Angle	°	415		415		415		415	
Working pressure	psi	4570	4640	4570	4640	4570	4640	4570	4640
Oil tank capacity	gal	34,3		34,3		34,3		34,3	
Max Oil flow	gal/min	18,5	21,1	18,5	21,1	18,5	21,1	18,5	21,1
Max lifting height	ft-in	39' 1"		45' 7"		52' 6"		59' 9"	
Standard crane weight	lb	5080	5235	5410	5580	5730	5910	5975	6175

110 countries
+3,500 employees
20,000 customers
+30 subsidiaries
12 production facilities



Hyva is a leading provider of innovative and highly efficient transport solutions for commercial vehicles used in transport, construction, mining, materials handling and environmental service industries.

Founded in 1979 in the Netherlands, the company has a global presence with more than 30 wholly owned subsidiaries, extraordinary service coverage and 12 manufacturing facilities in Brazil, China, Europe and India.

For more information on Hyva, please visit www.hyva.com

or follow us on:



Hyva Corporation
864 Lively Blvd,
Wood Dale, IL 60191
USA
Telephone: +1 630 227 9020
Fax: +1 630 227 9029
salesusa@hyva.com
www.hyva.com
www.hyvacrane.com



**Quality and
environmental certified**

DEALER STAMP

Data, descriptions, and illustrations pertain only and uniquely to models sold at the time of printing of this brochure. After the date of printing, this information is purely indicative and not binding upon HYVA. Future modifications are solely at the discretion of HYVA and are always in compliance with applicable and pertinent safety standards. To obtain updated data, descriptions, and illustrations, contact the manufacturer or your reseller. Cranes manufactured and/or marketed by HYVA. HYVA is not responsible for the special applications depicted. Crane applications and accessories described herein are only examples. Some applications and equipment shown may not be approved for use in CE countries or other areas. It is the installer's responsibility to ensure that the crane is applied correctly, and that its application, installation, and accessories maintain safety and comply with all local laws.